



Orbix[®] 3.3

Installation Guide

Service Pack 8, February 2005

IONA Technologies PLC and/or its subsidiaries may have patents, patent applications, trademarks, copyrights, or other intellectual property rights covering subject matter in this publication. Except as expressly provided in any written license agreement from IONA Technologies PLC, the furnishing of this publication does not give you any license to these patents, trademarks, copyrights, or other intellectual property. Any rights not expressly granted herein are reserved.

IONA, IONA Technologies, the IONA logo, Orbix, Orbix Mainframe, Orbix Connect, Artix, Artix Mainframe, Artix Mainframe Developer, Mobile Orchestrator, Orbix/E, Orbacus, Enterprise Integrator, Adaptive Runtime Technology, and Making Software Work Together are trademarks or registered trademarks of IONA Technologies PLC and/or its subsidiaries.

Java and J2EE are trademarks or registered trademarks of Sun Microsystems, Inc. in the United States and other countries. CORBA is a trademark or registered trademark of the Object Management Group, Inc. in the United States and other countries. All other trademarks that appear herein are the property of their respective owners.

IONA Technologies PLC makes no warranty of any kind to this material including, but not limited to, the implied warranties of merchantability and fitness for a particular purpose. IONA Technologies PLC shall not be liable for errors contained herein, or for incidental or consequential damages in connection with the furnishing, performance or use of this material.

COPYRIGHT NOTICE

No part of this publication may be reproduced, stored in a retrieval system or transmitted, in any form or by any means, photocopying, recording or otherwise, without prior written consent of IONA Technologies PLC. No third party intellectual property right liability is assumed with respect to the use of the information contained herein. IONA Technologies PLC assumes no responsibility for errors or omissions contained in this book. This publication and features described herein are subject to change without notice.

Copyright © 2001–2005 IONA Technologies PLC. All rights reserved.

All products or services mentioned in this manual are covered by the trademarks, service marks, or product names as designated by the companies who market those products.

Updated: 31-May-2006

Contents

Chapter 1	Installing Orbix 3.3 SP8	1
	Introduction	2
	Prerequisites to Installing Orbix 3.3 SP 8	6
	Installing Orbix 3.3 SP 8 Without the GUI	15
	Installing Orbix 3.3 SP 8 With the GUI	16
	Verifying Your Installation	23
	Uninstalling Orbix 3.3 SP 8	27
	Further Information	28

CONTENTS

Installing Orbix 3.3 SP8

This document provides instructions for installing Orbix 3.3 SP 8 on Windows, Solaris, and HP-UX.

In this document

This chapter discusses the following topics:

Introduction	page 2
Prerequisites to Installing Orbix 3.3 SP 8	page 6
Installing Orbix 3.3 SP 8 Without the GUI	page 15
Installing Orbix 3.3 SP 8 With the GUI	page 16
Verifying Your Installation	page 23
Uninstalling Orbix 3.3 SP 8	page 27
Further Information	page 28

Introduction

Product sets

This document provides instructions for installing Orbix 3.3 SP 8 on Windows, Solaris, and HP-UX.

Orbix 3.3 SP 8 consists of three product sets, each enabled by separate license codes:

- Orbix 3.3 SP 8 Java Edition
- Orbix 3.3 SP 8 C++ Edition
- OrbixOTS 3.3 SP 8

You may purchase and license any valid combination of these sets.

Product components

Orbix 3.3 SP 8 comprises the following components:

Components	Windows 2000 and XP	Solaris 2.8, 2.9 and 2.10	HP-UX 11.00, 11i, and IA64
Development Platform for Java	Available	Available	Available
Development Platform for C++	Available	Available	Available
Orbix Code Generation Toolkit	Available	Available	Available
OrbixCOMet	Available	Not Applicable	Not Applicable
OrbixEvents	Available	Available	Available
OrbixNames	Available	Available	Available
OrbixSSL	Available	Available	Available
Orbix Wonderwall	Available	Available	Available

The Orbix 3.3 SP 8 CD-ROM includes install programs for Windows, Solaris, and HP-UX, which deliver development platforms for all the components above except OrbixSSL 3.3 SP 8.

The OrbixSSL 3.3 SP 8 CD-ROM includes install programs for Windows, Solaris, and HP-UX, which deliver OrbixSSL 3.3 SP 8 development platforms. See the *OrbixSSL 3.3 SP 8 Installation Guide* for details on how to install OrbixSSL.

JRE requirements

The Orbix 3.3 SP 8 installation was built with InstallAnywhere, which is a Java application. The installer requires a JRE (Java Runtime Environment). You should provide the JRE yourself (see Installation Prerequisites), or use a pre-installed JRE or JDK before launching the installer. The Windows Installer includes a JRE.

Installation steps

To install Orbix 3.3 SP 8 follow these steps:

- Determine your Installation Type.
- Check the Prerequisites to Installing Orbix 3.3 SP 8.
- Install Orbix 3.3 SP 8 on Your Host Machine.
- Verify Your Installation.

Note: Due to legal restrictions in some countries, OrbixSSL is not supplied on the same CD-ROM as Orbix 3.3 SP 8. OrbixSSL 3.3 SP 8 is enabled with Orbix 3.3 SP 8 Java Edition and Orbix 3.3 SP 8 C++ Edition license codes.

Before You Begin Your Installation

Before you install Orbix 3.3 SP 8, we recommend that you visit the Orbix 3.3 SP 8 Documentation Web Page at <http://www.iona.com/support/docs/orbix/orbix33.xml> to read the latest version of the Orbix 3.3 SP 8 Release Notes , and check for any updates to this Installation Guide.

Note: Orbix 3.3 SP 8 cannot be installed on machines that do not support 256 (8 bit) colors, because the Orbix installer is a Java application built on the Java platform which does not support 16 colors. For more information see

<http://java.sun.com/products/jdk/1.2/changes.html#2D>.

Note: When installing Orbix 3.3 SP 8 using PCAnywhere (that is via a remote client) the following display information must be followed: "Display resolution of type VGA (640 x 480). For more information see ftp://ftp.symantec.com/public/english_us_canada/products/pcanywhere/pc_anywhere32/ver10.5/manuals/pca_105_user.pdf.

Orbix 3.3 SP 8 License Codes

You must have a valid license code from IONA to install Orbix 3.3 SP 8 Java edition, Orbix 3.3 SP 8 C++ edition, and OrbixOTS. All other components of Orbix 3.3 SP 8 are activated by these license codes. The code is a long numeric string taking the general form:

00000000-11111111-22222222-33333333-44444444

Your license code should be included in a loose sheet in your Orbix 3.3 SP 8 pack. Otherwise, as Orbix 3.3 SP 8 is a service pack release of Orbix 3.3, the license codes provided for Orbix 3.3 are valid for Orbix 3.3 SP 8. If you do not have any license codes, please contact IONA before proceeding any further.

Determine Your Installation Type

Orbix 3.3 SP 8 comprises three product sets each enabled by separate license codes. You may purchase and license any valid combination of these sets. The three product sets are Orbix 3.3 SP 8 Java Edition, Orbix 3.3 SP 8 C++ Edition, and OrbixOTS 3.3 SP 8. Each combination enables different groups of components as described below:

Component	Java Edition	C++ Edition	OrbixOTS
Development Platform for Java	Enabled	-	-
Development Platform for C++	-	Enabled	-
OrbixOTS	-	-	Enabled
Orbix Code Generation Toolkit	Enabled	Enabled	-
OrbixCOMet	Enabled (Windows 2000 only)	Enabled (Windows 2000 only)	-

Component	Java Edition	C++ Edition	OrbixOTS
OrbixEvents	Enabled	Enabled	-
OrbixNames	Enabled	Enabled	-
OrbixSSL	Enabled	Enabled	-
Orbix Wonderwall	Enabled	Enabled	-

All components are enabled if your purchased licenses for all three combinations.

Note: OrbixOTS 3.3 SP 8 is only available with Orbix 3.3 SP 8 Java Edition and/or Orbix 3.3 SP 8 C++ Edition. It is installed when you install Orbix 3.3 SP 8 Java Edition and/or Orbix 3.3 SP 8 C++ Edition. However, a separate license key is required to use OrbixOTS 3.3 SP 8.

Prerequisites to Installing Orbix 3.3 SP 8

Existing Orbix Installations

If you install Orbix 3.3 SP 8 in the same location as an existing Orbix installation, the existing installation is overwritten. If you have an older version of Orbix on your system and you do not want it overwritten, you should install Orbix 3.3 SP 8 in a new location on your file system.

Installation Prerequisites

Prerequisite	Notes
Privileges	<p>General</p> <p>To install in a non-default location, you must have permission to create files and directories in that location.</p> <p>Windows</p> <p>To install in the default location, Windows users must have administrator privileges.</p> <p>UNIX</p> <p>To install into the default location, UNIX users must have root privileges.</p>

Prerequisite	Notes
UNIX DISPLAY	<p>The Installer was built using InstallAnywhere, which is a GUI application. To install Orbix 3.3 SP 8 without the GUI, follow the instructions in Installing Orbix 3.3 SP 8 Without the GUI.</p> <p>For a GUI application to run on UNIX you will need to install on a UNIX host with X and a windowing environment configured. You will need to ensure your display environment variable is set to the workstation you are logged into. For example, set the following environment variable, substituting the full Domain Name System (DNS) name of your workstation for <code>imaginary.dublin.iona.ie</code>:</p> <pre>export DISPLAY=imaginary.dublin.iona.ie:0.0</pre> <p>Contact your system administrator if you require assistance with this.</p>

Prerequisite	Notes
JRE	<p>The Installer was built using InstallAnywhere, which is a Java application. For it to run it needs a JRE (Java Runtime Environment). You are also required to provide the location of the JRE in order for the installation to run. The versions mentioned here are those built and tested on the operating system. (Be sure to install all required patches for all UNIX-based platforms.)</p> <p>Windows JRE</p> <p>The Windows Installer includes a JRE (version 1.5.0_03).</p> <p>Solaris JRE</p> <p>Solaris users can obtain the JRE version 1.3.1_16 from:</p> <p>http://java.sun.com/products/archive/</p> <p>HP-UX JRE</p> <p>HP-UX users can obtain the JRE version 1.3.1_16 from:</p> <p>http://www.hp.com/products1/unix/java/</p> <p>HP-UX IA64</p> <p>HP-UX users can obtain the JRE version 1.3.1_16 from:</p> <p>http://www.hp.com/products1/unix/java/</p>
Domain Name	<p>The installer requires your domain name for Orbix 3.3 SP 8 configuration. The Domain Name System (DNS) to resolve Internet or Unix computer names. Contact your network administrator to obtain the domain name for your TCP/IP internet prior to installing Orbix 3.3 SP 8.</p>

You need access on all platforms to an existing JRE (or JDK) version 1.3.1 or you should obtain and install the JRE yourself on your system prior to running the Installer. See the above table for details on obtaining the JRE.

CD-ROM Location of Installers

Installation CD-ROM	Description
/cdrom/install.htm	This installation guide
/cdrom/NT/install.exe	Windows Installers (with JRE) - Windows 2000
/cdrom/SOL8/install.bin	Solaris Installers (without JRE) - Solaris 2.8, 2.9 & 2.10
/cdrom/HPUX11/install.bin	HP-UX Installer (without JRE) - HP-UX 11, 11i
/cdrom/HPUXIA64/install.bin	HP-UX Itanium Installer (without JRE) - HP-UX 11.23

Mounting the CD-ROM

Depending on your system configuration `/cdrom` might have to be replaced with a different mount point. Contact your system administrator if you require assistance with this.

The following commands can be used to mount the CD-ROM on the platforms indicated:

Platform	Command
Windows	No command required for Windows
Solaris	<code>mount -F hsfs -o ro /dev/dsk/clt6d0s0 /cdrom</code>
HP-UX	<code>mount -F cdfs -o cdcase /dev/dsk/c3t2d0 /cdrom</code>

The values shown for the UNIX device controller are examples only and will vary depending on your system.

Operating Systems

In regard to the operating system patches listed in this install guide, Orbix 3.3 SP 8 may work perfectly well without installing all the patches for a particular operating system, but IONA advises that they be installed to reduce the possibility of Orbix 3.3 SP 8 not operating properly because they were not installed.

Please consult specific vendor's websites for more information on patches.

Orbix 3.3 SP 8 runs on the following operating systems:

Operating System	Required Operating System Patches
Windows 2000	SP2
Windows XP	SP1
Solaris 2.8	<p>All Y2K patch clusters and recommended operating system patches up to December 1999 should be applied.</p> <p>The following additional patches are also recommended.</p> <p>108434-03 - Shared Library Patch for C++</p> <p>108435-03 - Shared Library Patch for C++</p> <p>109505-09 - Compiler Patch</p> <p>109508-06 - C++ Compiler Patch</p>
Solaris 2.9	<p>The following patches are recommended.</p> <p>112963-03 : SunOS 5.9: linker patch</p> <p>111711-01 : 32-bit Shared library patch for C++</p> <p>111712-01 : 64-bit Shared library patch for C++</p> <p>112661-02 : SunOS 5.9: IIM and X Input & Output Method patch</p> <p>112785-09 : X11 6.6.1: Xsun patch</p>
Solaris 2.10	Base level patches

Operating System	Required Operating System Patches
HP-UX 11.0	<p>All Y2K patch bundles and recommended operating system patches up to December 1999 should be applied.</p> <p>The following additional patches and patch bundles are also recommended.</p> <p>These patches can be displayed by using the following commands:</p> <pre>swlist -l product '*ava*' swlist -l product 'PH??_*' swlist grep PH swlist grep XS</pre> <p>PHCO_23963 libc cumulative header file patch PHCO_25707 libc cumulative patch PHCO_26000 Pthread library cumulative patch. PHSS_21075 varargs.h patch PHSS_23823 X/Motif 32bit Runtime APR2001 Periodic Patch PHSS_24303 ld(1) and linker tools cumulative patch PHSS_25170 HP aC++ Compiler (aCC A.03.31) PHNE_22566 Cumulative STREAMS Patch PHNE_25423 cumulative ARPA Transport patch PHNE_21433 Streams Pty cumulative patch PHKL_20333 LVM Cumulative patch</p>
HP-UX 11i	<p>All Y2K patch bundles and recommended operating system patches up to December 1999 should be applied.</p> <p>The following additional patches and patch bundles are also recommended.</p> <p>These patches can be displayed by using the following commands:</p> <pre>swlist -l product '*ava*' swlist -l product 'PH??_*' swlist grep PH swlist grep XS</pre> <p>PHSS_22898 HP aC++ -AA runtime libraries</p>

Operating System	Required Operating System Patches
HP-UX IA64	<p>All recommended operating system patches up to March 2004 should be applied.</p> <p>The following additional patches and patch bundles are also recommended.</p> <p>These patches can be displayed by using the following commands:</p> <pre>swlist -l product '*ava*' swlist -l product 'PH??_*' swlist grep PH swlist grep XS PHSS_29659 aC++ runtime (A.05.55)</pre>
Windows 2000	x86/Windows 2000 Service Pack 3; Java (JRE or SDK) 1.3.1_16, 1.4.2 or 5.0
Windows XP	x86/Windows XP Service Pack 1; Java (JRE or SDK) 1.3.1_16, 1.4.2 or 5.0

Development Environment Prerequisites

Java Development

Orbix 3.3 SP 8 was built and tested with the following JDK versions.

Platform	Built on (JDK version)	Tested on (JDK version)
Solaris 2.8	1.3.1_16	1.3.1_16, 1.4.2, 5.0
Solaris 2.9	-	1.3.1_16, 1.4.2, 5.0
Solaris 2.10	-	1.3.1_16, 1.4.2, 5.0
HP-UX 11.0	1.3.1_16	1.3.1_16, 1.4.2, 5.0
HP-UX 11i	-	1.3.1_16, 1.4.2, 5.0
HP-UX 11i (64 bit)	-	1.3.1_16, 1.4.2, 5.0
HP-UX IA64	1.3.1_16	1.3.1_16, 1.4.2, 5.0
Windows 2000	1.3.1_16	1.3.1_16, 1.4.2, 5.0
Windows XP	-	1.3.1_16, 1.4.2, 5.0

C++ Development

Orbix 3.3 SP 8 was built and tested with the following C++ compilers.

Platform	Compiler Built on	Compiler Tested on
Solaris 2.8	Sun C++ 5.2 (32 bit)	Sun C++ 5.2 (32 bit)
Solaris 2.8	-	Sun C++ 5.3 (32 bit)
Solaris 2.9	-	Sun C++ 5.4 (32 bit), Sun C++ 5.5 (32 bit)
Solaris 2.10	-	Sun C++ 5.7 (32 bit)
HP-UX 11.0	HP ANSI C++ (aCC) A03.3 - (32 bit)	HP ANSI C++ (aCC) A03.31 (32 bit)
HP-UX11i	-	HP ANSI C++ (aCC) B3910B A03.31 (32 bit)
HP-UX 11i (64 bit)	-	HP ANSI C++ (aCC) B3910B A03.56 (32 bit)
HP-UX IA64	HP ANSI C++ (aCC) B3910B A05.55 (32 bit)	HP ANSI C++ (aCC) B3910B A05.55 (32 bit)
Windows 2000	VC6.0 (SP3)	VC6.0 (SP3)
Windows XP	-	VC6.0 (SP3)

OrbixOTS Development

OrbixOTS requires access to a database installed on your system. OrbixOTS supports the following database products:

Platform	Database
Solaris 2.7	Oracle 8i (8.1.6)
Solaris 2.8	Oracle 8i (8.1.6)
Solaris 2.9	Oracle 8i (8.1.6)
Solaris 2.10	Oracle 8i (8.1.6)
HP-UX 11.0	Oracle 8i (8.1.6)

Platform	Database
HP-UX 11i	Oracle 8i (8.1.6)
HP-UX IA64	Oracle 8i (8.1.6)
Windows NT4 (SP6a), 2000 (SP2), and XP (SP1)	Oracle 8i (8.1.5), & SQL Server 7

Disk Space Requirements

The following table lists the approximate amount of disk space taken up by the Orbix 3.3 files. The install program also requires approximately 50MB of temporary work space.

Component	Windows	Solaris	HP-UX
Development Environment for Java & C++	80 MB	130 MB	140 MB
Documentation	50 MB	50 MB	50 MB
OrbixSSL	15 MB	30 MB	40 MB

Note: On Windows, please check that you have enough disk space before starting the installation.

Default Location

The default location of your Orbix 3.3 installation is as follows:

Platform	Default Location
UNIX main installation	/opt/iona
UNIX variable files	/var/opt/iona
Windows	c:\iona

Note: Orbix 3.3 SP 8 installs in a fixed location relative to the path you specify. Also we do not recommend installation into locations with spaces in their directory names.

Installing Orbix 3.3 SP 8 Without the GUI

Overview

Installing Orbix 3.3 SP 8 without a GUI (silent install mode) allows you to run the installer without using the GUI. The silent mode installer looks to a template file that provides the required information.

For more detailed information on using silent install mode, see Knowledge Base article 4087.633 on the IONA Web site.

Installing in Silent Mode

1. To install in silent mode

```
$ ./install.bin -f template.file
```

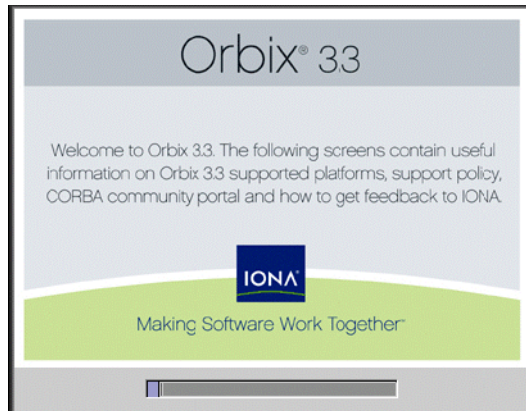
Where template.file contains the following information.

```
##Specimen properties with operating system Licence codes.
##Use on one combination as per requirement. The first section is in effect now.
##It will install Orbix 3.3 SP 8 Java and C++ edition with OTS
##-----
##C++, Java with OTS
##-----
##Choose the directory where you want Orbix 3.3 SP 8 installed
USER_INSTALL_DIR=/local1/install_dir
##Choose the location of your Java Development Platform
JAVA_LOCATION=/usr/java
JAVA_VERSION=1.3
JAVA_VERSION_1=1.3
ISVALIDJDKPATH=TRUE
INSTALLER_UI=SILENT
##Choose the components of Orbix you want to install
PRODUCTS="Orbix 3.3 - Java Edition and C++ Edition with OrbixOTS 3.3"
## Licence key: c++, java , ots
LICENCE_KEY= "<c++ license key1>", "<java license key2>", "<ots license_key3>"
LICENCE_KEY_1=<Licence Key1>
LICENCE_KEY_2=<License Key2>
LICENCE_KEY_3=<License Key3>
DOMAIN=dublin.iona.ie ##Choose the domain for the installation
DOMAIN_1=dublin.iona.ie
##-----
```

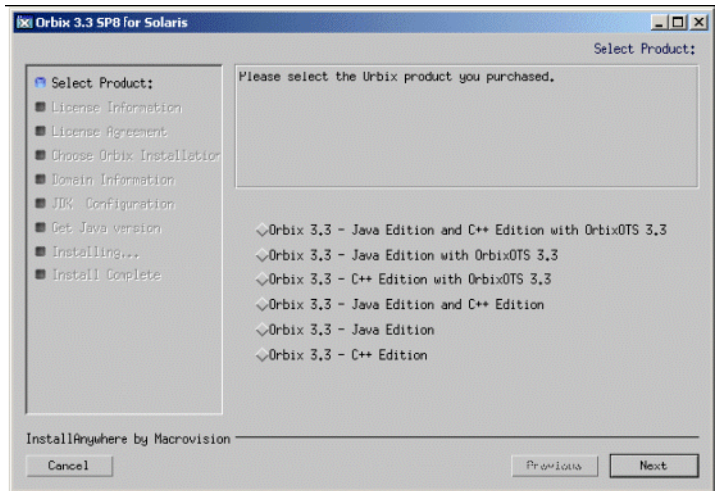
Installing Orbix 3.3 SP 8 With the GUI

Installation steps

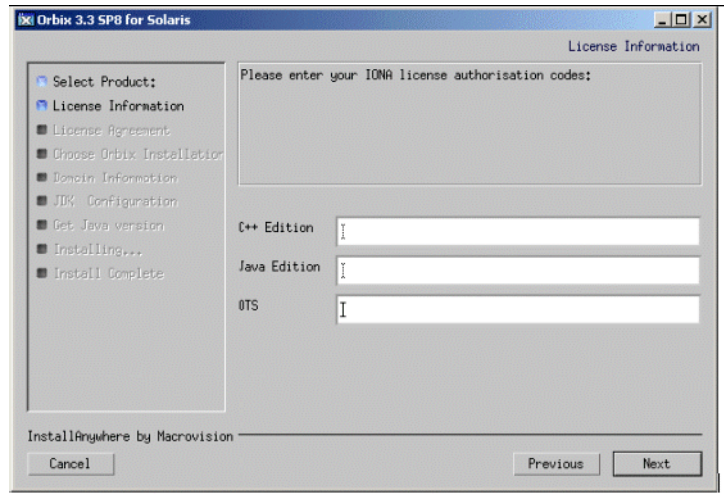
1. After the JRE is initialized, a progress bar is displayed as the installer prepares to begin the installation process.



2. In the **Select Product** screen, select the Orbix 3.3 SP 8 product set that you purchased and click **Next** to continue.



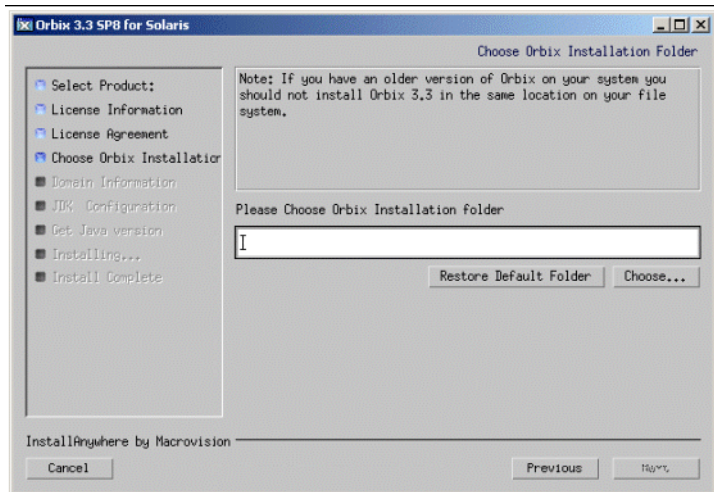
3. In the **License Information** screen, enter the IONA license code(s) you have purchased in the appropriate text field(s). Click **Next** to continue.



The license keys requested here will depend on the product set you selected in the previous screen.

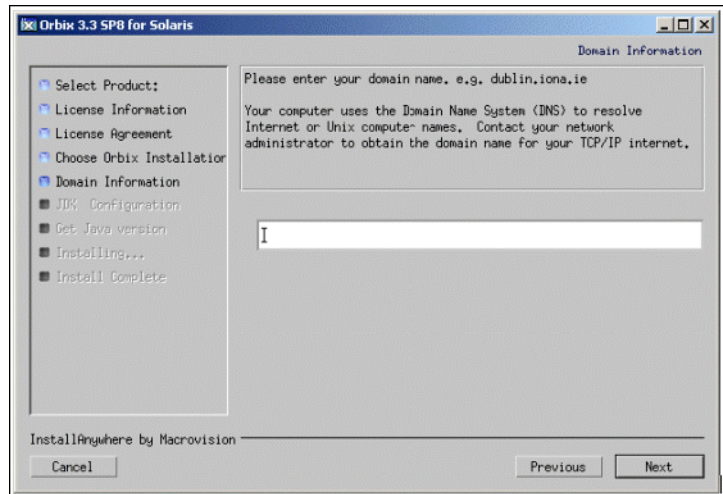
4. In the **License Agreement** screen, click **Yes** to agree to the terms of the License Agreement then click **Next** to continue.

5. In the **Orbix Installation Folder** screen, enter the file location that you wish to install Orbix 3.3 SP 8 into, and click **Next** to continue.

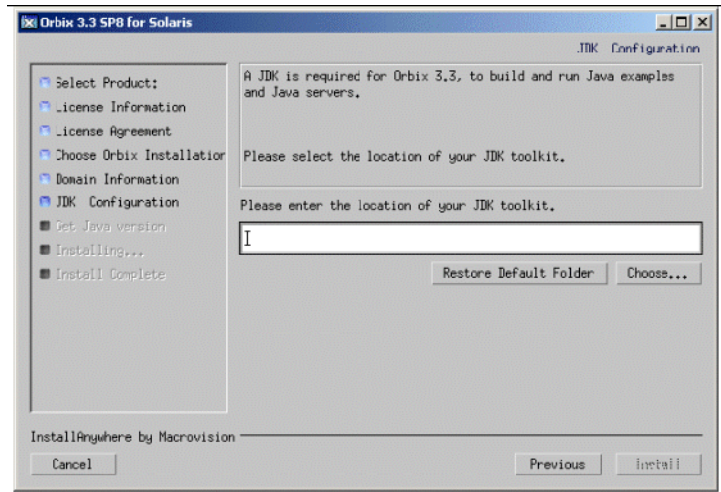


Note: You must have permission to create files and directories in this location.

6. In the **Domain Information** screen, enter your domain information, and click **Next** to continue.

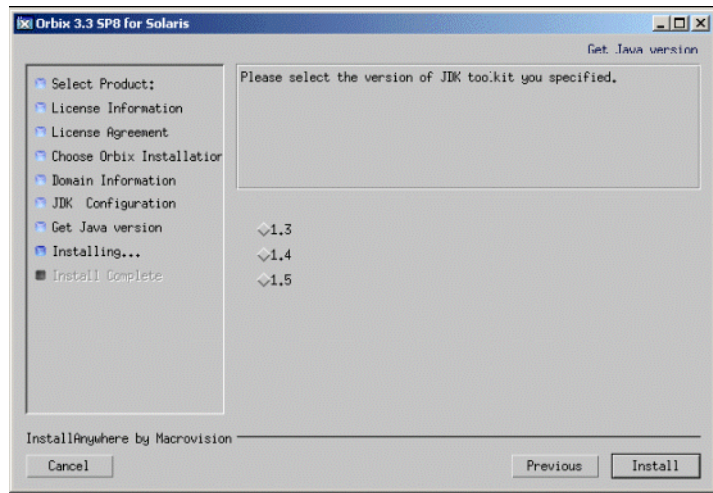


7. In the **JDK Configuration** screen, enter the location of your Java Development Kit. This is not required for Orbix 3.3 SP 8 C++ edition.



Click **Next** to continue.

8. In the **Get Java Version** screen, select the version of your Java Development Kit, and click **Next** to continue.



9. A progress bar will be displayed while the files are installed.
10. After the installation is complete the Orbix Welcome Page launches automatically.
11. The **Install Complete** screen is displayed to confirm that the installation is finished. Click **Done** to finish the installation.

Verifying Your Installation

Configuration Checks

When the installation is complete, follow these steps to ensure correct operation:

1. Check the contents of the Orbix configuration files, to ensure that the specified directory paths and domain name match those for your site.

Platform	Location
UNIX	/opt/iona/config/iona.cfg /opt/iona/config/common.cfg /opt/iona/config/idlgen.cfg /opt/iona/config/orbix3.cfg /opt/iona/config/orbixweb3.cfg /opt/iona/config/orbixnames3.cfg /opt/iona/config/orbixevents.cfg /opt/iona/config/orbixots.cfg
Windows	C:\iona\config\iona.cfg C:\iona\config\common.cfg C:\iona\config\idlgen.cfg C:\iona\config\orbix3.cfg C:\iona\config\orbixweb3.cfg C:\iona\config\orbixnames3.cfg C:\iona\config\orbixevents.cfg C:\iona\config\orbixots.cfg

2. Read the *Orbix 3.3 SP 8 Release Notes*.

- Before attempting to run the orbix daemon or the orbix java activator from a terminal or command shell, run the supplied scripts which set the following environment variables `IT_CONFIG_PATH`, `IONA_ROOT`, `JAVAHOME` and `PATH`. The scripts are run by typing the following commands in a terminal:

Platform	Command
UNIX	<code>/opt/iona/setenvs.sh (or setenvs.csh)</code>
Windows	<code>C:\iona\setenvs.bat</code>

Testing Your Orbix 3.3 SP 8 Java Edition Installation

To ensure that your installation is fully operational, you should change directory to the demos directory of your Orbix 3.3 SP 8 installation, for example:

Platform	Location	Make command
UNIX	<code>/opt/iona/demos/common/jumpstart/basic/java</code>	<code>make</code>
Windows	<code>C:\iona\demos\common\jumpstart\basic\java</code>	<code>compile.bat</code>

Read the `index.html` file for instructions to run the demonstration program.

Testing Your Orbix 3.3 SP 8 C++ Edition Installation

To ensure that your installation is fully operational, you should change directory to the demos directory of your Orbix 3.3 SP 8 installation, for example:

Platform	Location	Make command
UNIX	<code>/opt/iona/demos/common/jumpstart/basic/cxx</code>	<code>make</code>
Windows	<code>C:\iona\demos\common\jumpstart\basic\cxx</code>	<code>compile.bat</code>

Read the `index.html` file for instructions to run the demonstration program.

Reinstalling the License Code

If the licensed applications fail to run (e.g. orbixd, idl, idlj, libEncinaServerOrbix, libEncinaClientOrbix) you may have made an error in entering your license authorization code. You can reinstall the licence by changing to the bin directory of your Orbix 3.3 SP 8 installation and typing in the following line, using your authorization code as indicated in the example below (replace "orbixd" with the filename of the application that fails to run, and replace licence_code with your licence authorization code).

Platform	Command
UNIX	<code>install_license orbixd licence_code</code>
Windows	<code>license.exe orbixd licence_code</code>

The following Orbix 3.3 SP 8 application files are enabled by the corresponding Orbix 3.3 SP 8 product license authorization codes:

Application	Java Edition code	C++ Edition code	OrbixOTS code
orbixd - Orbix C++ Daemon	Code enables	Code enables	-
idl - Orbix C++ IDL compiler	-	Code enables	-
idlj - Orbix Java IDL compiler	Code enables	-	-
libEncinaServerOrbix - OTS library	-	-	Code enables
libEncinaClientOrbix - OTS library	-	-	Code enables
update - SSL update utility*	Code enables	Code enables	-

Structure of Installed Directories

A complete installation of Orbix 3.3 SP 8 will have the following directory structure in the install location:

Directory	Description
\bin	Binary images for all components
\COMet	OrbixCOMet SDK and utilities (Windows 2000 only)
\config	Repositories and configuration files for all components
\contrib	Utilities contributed by IONA engineers and partners
\demos	Demonstrations for all components
\docs	Links to the latest information on Orbix 3.3 SP 8
\idl	IDL files
\include	Header files
\lib	Development libraries
\OrbixSSL	OrbixSSL files, utilities and examples (OrbixSSL installation required)
\tools	GUI Tools
\UninstallOrbix	Files for uninstalling Orbix 3.3 SP 8
\UninstallOrbixSSL	Files for uninstalling OrbixSSL 3.3 SP 8 (OrbixSSL installation required)
\Wonderwall	Orbix Wonderwall files, utilities and examples

Uninstalling Orbix 3.3 SP 8

To uninstall Orbix 3.3 SP 8 run the UninstallOrbix file in the UninstallOrbix directory of your Orbix 3.3 SP 8 installation, examples are given below:

Platform	Uninstall script
UNIX	<code>/opt/iona/UninstallOrbix/UninstallOrbix</code>
Windows	<code>C:\iona\UninstallOrbix\UninstallOrbix</code>

Note: The Uninstaller will remove the complete installation of Orbix 3.3 SP 8, but it will not remove any files that were added or generated after installation (for example, log files, executables generated in demo runs, implementation repositories, and so on). If OrbixSSL has been installed, it should be uninstalled first.

Further Information

If you require further technical assistance in using this product, please contact support@iona.com.