

# PROGRESS<sup>®</sup> ORBIX<sup>®</sup>

## BMC Patrol Integration Guide

Version 6.3.5, July 2011

© 2011 Progress Software Corporation and/or its subsidiaries or affiliates. All rights reserved.

These materials and all Progress® software products are copyrighted and all rights are reserved by Progress Software Corporation. The information in these materials is subject to change without notice, and Progress Software Corporation assumes no responsibility for any errors that may appear therein. The references in these materials to specific platforms supported are subject to change.

Actional, Apama, Artix, Business Empowerment, Business Making Progress, DataDirect (and design), DataDirect Connect, DataDirect Connect64, DataDirect Technologies, DataDirect XML Converters, DataDirect XQuery, DataXtend, Dynamic Routing Architecture, EdgeXtend, Empowerment Center, Fathom, Fuse Media tion Router, Fuse Message Broker, Fuse Services Framework, IntelliStream, IONA, Making Software Work Together, Mindreef, ObjectStore, OpenEdge, Orbix, PeerDirect, POSSENET, Powered by Progress, PowerTier, Progress, Progress DataXtend, Progress Dynamics, Progress Business Empowerment, Progress Empowerment Center, Progress Empowerment Program, Progress OpenEdge, Progress Profiles, Progress Results, Progress Software Business Making Progress, Progress Software Developers Network, Progress Sonic, ProVision, PS Select, Savvion, SequeLink, Shadow, SOAPscope, SOAPStation, Sonic, Sonic ESB, SonicMQ, Sonic Orchestration Server, SpeedScript, Stylus Studio, Technical Empowerment, WebSpeed, Xcalia (and design), and Your Software, Our Technology-Experience the Connection are registered trademarks of Progress Software Corporation or one of its affiliates or subsidiaries in the U.S. and/or other countries. AccelEvent, Apama Dashboard Studio, Apama Event Manager, Apama Event Modeler, Apama Event Store, Apama Risk Firewall, AppsAlive, AppServer, ASPen, ASP-in-a-Box, BusinessEdge, Cache-Forward, CloudEdge, DataDirect Spy, DataDirect SupportLink, Fuse, FuseSource, Future Proof, GVAC, High Performance Integration, Object Store Inspector, ObjectStore Performance Expert, OpenAccess, Orbacus, Pantero, POSSE, ProDataSet, Progress Arcade, Progress CloudEdge, Progress Control Tower, Progress ESP Event Manager, Progress ESP Event Modeler, Progress Event Engine, Progress RFID, Progress RPM, PSE Pro, SectorAlliance, SeeThinkAct, Shadow z/Services, Shadow z/Direct, Shadow z/Events, Shadow z/Presentation, Shadow Studio, SmartBrowser, SmartComponent, SmartDataBrowser, SmartDataObjects, SmartDataView, SmartDialog, SmartFolder, Smart Frame, SmartObjects, SmartPanel, SmartQuery, SmartViewer, SmartWindow, Sonic Business Integration Suite, Sonic Process Manager, Sonic Collaboration Server, Sonic Continuous Availability Architecture, Sonic Database Service, Sonic Workbench, Sonic XML Server, The Brains Behind BAM, WebClient, and Who Makes Progress are trademarks or service marks of Progress Software Corporation and/or its subsidiaries or affiliates in the U.S. and other countries. Java is a registered trademark of Oracle and/or its affiliates. Any other marks contained herein may be trademarks of their respective owners.

#### Third Party Acknowledgements:

Progress Orbix v6.3.5 incorporates Jakarata-struts 1.0.2 from the Apache Software Foundation (<http://www.apache.org>). Such Apache Technology is subject to the following terms and conditions: The Apache Software License, Version 1.1 Copyright (c) 1999-2001 The Apache Software Foundation. All rights reserved. Redistribution and use in source and

---

binary forms, with or without modification, are permitted provided that the following conditions are met: 1. Redistributions of source code must retain the above copyright notice, this list of conditions and the following disclaimer. 2. Redistributions in binary form must reproduce the above copy right notice, this list of conditions and the following disclaimer in the documentation and/or other materials provided with the distribution. 3. The end-user documentation included with the redistribution, if any, must include the following acknowledgment: "This product includes software developed by the Apache Software Foundation (<http://www.apache.org/>)." Alternately, this acknowledgment may appear in the software itself, if and wherever such third-party acknowledgments normally appear. 4. The names "The Jakarta Project", "Struts", and "Apache Software Foundation" must not be used to endorse or promote products derived from this software without prior written permission. For written permission, please contact [apache@apache.org](mailto:apache@apache.org). 5. Products derived from this software may not be called "Apache", nor may "Apache" appear in their name, without prior written permission of the Apache Software Foundation. THIS SOFTWARE IS PROVIDED ``AS IS'' AND ANY EXPRESSED OR IMPLIED WARRANTIES, INCLUDING, BUT NOT LIMITED TO, THE IMPLIED WARRANTIES OF MER CHANTABILITY AND FITNESS FOR A PARTICULAR PURPOSE ARE DIS CLAIMED. IN NO EVENT SHALL THE APACHE SOFTWARE FOUNDATION OR ITS CONTRIBU TORS BE LIABLE FOR ANY DIRECT, INDIRECT, INCIDENTAL, SPECIAL, EXEM-PLARY, OR CONSEQUEN TIAL DAMAGES (INCLUDING, BUT NOT LIMITED TO, PROCURE-MENT OF SUB STITUTE GOODS OR SERVICES; LOSS OF USE, DATA, OR PROFITS; OR BUSINESS INTERRUPTION) HOWEVER CAUSED AND ON ANY THEORY OF LIABILITY, WHETHER IN CONTRACT, STRICT LIA BILITY, OR TORT (INCLUDING NEGLIGENCE OR OTH-ERWISE) ARISING IN ANY WAY OUT OF THE USE OF THIS SOFTWARE, EVEN IF ADVISED OF THE POSSIBILITY OF SUCH DAMAGE. This software consists of voluntary contributions made by many individuals on behalf of the Apache Soft ware Foun dation. For more information on the Apache Software Foundation, please see <<http://www.apache.org/>>.

Progress Orbix v6.3.5 incorporates Jakarta-bcel 5.0 from the Apache Software Foundation ([http://www.apache.org](http://www.apache.org/)). Such Apache Technology is subject to the following terms and conditions: The Apache Software License, Version 1.1 Copy right (c) 2001 The Apache Software Foundation. All rights reserved. Redistribution and use in source and binary forms, with or without modification, are permitted provided that the following conditions are met: 1. Redistributions of source code must retain the above copyright notice, this list of conditions and the following disclaimer. 2. Redistributions in binary form must reproduce the above copyright notice, this list of conditions and the following disclaimer in the docu mentation and/or other materials provided with the distribution. 3. The end-user documentation included with the redistribu-tion, if any, must include the following acknowledgment: "This product includes software developed by the Apache Software Foundation (<http://www.apache.org/>)." Alternately, this acknowledgment may appear in the software itself, if and wherever such third-party acknowledgments normally appear. 4. The names "Apache" and "Apache Software Foundation" and "Apache BCEL" must not be used to endorse or promote products derived from this software with out prior written permission. For written permission, please contact [apache@apache.org](mailto:apache@apache.org). 5. Products derived from this software may not be called "Apache", "Apache BCEL", nor may "Apache" appear in their name, without prior written permission of the Apache Software Foundation. THIS SOFTWARE IS PROVIDED ``AS IS'' AND ANY EXPRESSED OR IMPLIED WAR-RANTIES, INCLUDING, BUT NOT LIMITED TO, THE IMPLIED WARRANTIES OF MERCHANTA-BILITY AND FITNESS FOR A PARTICULAR PURPOSE ARE DISCLAIMED. IN NO EVENT SHALL THE APACHE SOFTWARE FOUNDATION OR ITS CONTRIBUTORS BE LIABLE FOR ANY DIRECT, INDIRECT, INCIDENTAL, SPECIAL, EXEMPLARY, OR CONSEQUENTIAL DAMAGES (INCLUDING, BUT NOT LIMITED TO, PROCUREMENT OF SUBSTITUTE GOODS OR SERVICES;

## BMC Patrol Integration Guide

---

LOSS OF USE, DATA, OR PROFITS; OR BUSINESS INTERRUPTION) HOWEVER CAUSED AND ON ANY THEORY OF LIABILITY, WHETHER IN CONTRACT, STRICT LIABILITY, OR TORT (INCLUDING NEGLIGENCE OR OTHERWISE) ARISING IN ANY WAY OUT OF THE USE OF THIS SOFTWARE, EVEN IF ADVISED OF THE POSSIBILITY OF SUCH DAMAGE. This software consists of voluntary contributions made by many individuals on behalf of the Apache Software Foundation. For more information on the Apache Software Foundation, please see <<http://www.apache.org/>>.

Progress Orbix v6.3.5 incorporates Jakarta-regexp 1.2 from the Apache Software Foundation (<http://www.apache.org>). Such Apache Technology is subject to the following terms and conditions: The Apache Software License, Version 1.1 Copyright (c) 1999 The Apache Software Foundation. All rights reserved. Redistribution and use in source and binary forms, with or without modification, are permitted provided that the following conditions are met: 1. Redistributions of source code must retain the above copyright notice, this list of conditions and the following disclaimer. 2. Redistributions in binary form must reproduce the above copyright notice, this list of conditions and the following disclaimer in the documentation and/or other materials provided with the distribution. 3. The end-user documentation included with the redistribution, if any, must include the following acknowledgment: "This product includes software developed by the Apache Software Foundation (<http://www.apache.org>)." Alternately, this acknowledgment may appear in the software itself, if and wherever such third-party acknowledgments normally appear. 4. The names "The Jakarta Project", "Jakarta -Regex", and "Apache Software Foundation" and "Apache BCEL" must not be used to endorse or promote products derived from this software without prior written permission. For written permission, please contact [apache@apache.org](mailto:apache@apache.org). 5. Products derived from this software may not be called "Apache", nor may "Apache" appear in their name, without prior written permission of the Apache Software Foundation. THIS SOFTWARE IS PROVIDED `AS IS' AND ANY EXPRESSED OR IMPLIED WARRANTIES, INCLUDING, BUT NOT LIMITED TO, THE IMPLIED WARRANTIES OF MERCHANTABILITY AND FITNESS FOR A PARTICULAR PURPOSE ARE DISCLAIMED. IN NO EVENT SHALL THE APACHE SOFTWARE FOUNDATION OR ITS CONTRIBUTORS BE LIABLE FOR ANY DIRECT, INDIRECT, INCIDENTAL, SPECIAL, EXEMPLARY, OR CONSEQUENTIAL DAMAGES (INCLUDING, BUT NOT LIMITED TO, PROCUREMENT OF SUBSTITUTE GOODS OR SERVICES; LOSS OF USE, DATA, OR PROFITS; OR BUSINESS INTERRUPTION) HOWEVER CAUSED AND ON ANY THEORY OF LIABILITY, WHETHER IN CONTRACT, STRICT LIABILITY, OR TORT (INCLUDING NEGLIGENCE OR OTHERWISE) ARISING IN ANY WAY OUT OF THE USE OF THIS SOFTWARE, EVEN IF ADVISED OF THE POSSIBILITY OF SUCH DAMAGE. This software consists of voluntary contributions made by many individuals on behalf of the Apache Software Foundation. For more information on the Apache Software Foundation, please see <<http://www.apache.org/>>.

Progress Orbix v6.3.5 incorporates the Jakarta-log4j 1.2.6 from the Apache Software Foundation (<http://www.apache.org>). Such Apache Technology is subject to the following terms and conditions: The Apache Software License, Version 1.1 Copyright (c) 1999 The Apache Software Foundation. All rights reserved. Redistribution and use in source and binary forms, with or without modification, are permitted provided that the following conditions are met: 1. Redistributions of source code must retain the above copyright notice, this list of conditions and the following disclaimer. 2. Redistributions in binary form must reproduce the above copyright notice, this list of conditions and the following disclaimer in the documentation and/or other materials provided with the distribution. 3. The end-user documentation included with the redistribution, if any, must include the following acknowledgment: "This product includes software developed by the Apache Software Foundation (<http://www.apache.org/>)." Alternately, this acknowledgment may appear in

---

the software itself, if and wherever such third-party acknowledgments normally appear. 4. The names "log4j" and "Apache Software Foundation" and "Apache BCEL" must not be used to endorse or promote products derived from this software without prior written permission. For written permission, please contact [apache@apache.org](mailto:apache@apache.org). 5. Products derived from this software may not be called "Apache", nor may "Apache" appear in their name, without prior written permission of the Apache Software Foundation. THIS SOFTWARE IS PROVIDED ``AS IS" AND ANY EXPRESSED OR IMPLIED WARRANTIES, INCLUDING, BUT NOT LIMITED TO, THE IMPLIED WARRANTIES OF MERCHANTABILITY AND FITNESS FOR A PARTICULAR PURPOSE ARE DISCLAIMED. IN NO EVENT SHALL THE APACHE SOFTWARE FOUNDATION OR ITS CONTRIBUTORS BE LIABLE FOR ANY DIRECT, INDIRECT, INCIDENTAL, SPECIAL, EXEMPLARY, OR CONSEQUENTIAL DAMAGES (INCLUDING, BUT NOT LIMITED TO, PROCUREMENT OF SUBSTITUTE GOODS OR SERVICES; LOSS OF USE, DATA, OR PROFITS; OR BUSINESS INTERRUPTION) HOWEVER CAUSED AND ON ANY THEORY OF LIABILITY, WHETHER IN CONTRACT, STRICT LIABILITY, OR TORT (INCLUDING NEGLIGENCE OR OTHERWISE) ARISING IN ANY WAY OUT OF THE USE OF THIS SOFTWARE, EVEN IF ADVISED OF THE POSSIBILITY OF SUCH DAMAGE. This software consists of voluntary contributions made by many individuals on behalf of the Apache Software Foundation. For more information on the Apache Software Foundation, please see <http://www.apache.org/>.

Progress Orbix v6.3.5 incorporates Ant 1.5 from the Apache Software Foundation (<http://www.apache.org>). Such technology is subject to the following terms and conditions: The Apache Software License, Version 1.1 Copyright (c) 2000-2002 The Apache Software Foundation. All rights reserved. Redistribution and use in source and binary forms, with or without modification, are permitted provided that the following conditions are met: 1. Redistributions of source code must retain the above copyright notice, this list of conditions and the following disclaimer. 2. Redistributions in binary form must reproduce the above copyright notice, this list of conditions and the following disclaimer in the documentation and/or other materials provided with the distribution. 3. The end-user documentation included with the redistribution, if any, must include the following acknowledgment: "This product includes software developed by the Apache Software Foundation (<http://www.apache.org/>)." Alternately, this acknowledgment may appear in the software itself, if and wherever such third-party acknowledgments normally appear. 4. The names "Ant" and "Apache Software Foundation" and "Apache BCEL" must not be used to endorse or promote products derived from this software without prior written permission. For written permission, please contact [apache@apache.org](mailto:apache@apache.org). 5. Products derived from this software may not be called "Apache", nor may "Apache" appear in their name, without prior written permission of the Apache Software Foundation. THIS SOFTWARE IS PROVIDED ``AS IS" AND ANY EXPRESSED OR IMPLIED WARRANTIES, INCLUDING, BUT NOT LIMITED TO, THE IMPLIED WARRANTIES OF MERCHANTABILITY AND FITNESS FOR A PARTICULAR PURPOSE ARE DISCLAIMED. IN NO EVENT SHALL THE APACHE SOFTWARE FOUNDATION OR ITS CONTRIBUTORS BE LIABLE FOR ANY DIRECT, INDIRECT, INCIDENTAL, SPECIAL, EXEMPLARY, OR CONSEQUENTIAL DAMAGES (INCLUDING, BUT NOT LIMITED TO, PROCUREMENT OF SUBSTITUTE GOODS OR SERVICES; LOSS OF USE, DATA, OR PROFITS; OR BUSINESS INTERRUPTION) HOWEVER CAUSED AND ON ANY THEORY OF LIABILITY, WHETHER IN CONTRACT, STRICT LIABILITY, OR TORT (INCLUDING NEGLIGENCE OR OTHERWISE) ARISING IN ANY WAY OUT OF THE USE OF THIS SOFTWARE, EVEN IF ADVISED OF THE POSSIBILITY OF SUCH DAMAGE. This software consists of voluntary contributions made by many individuals on behalf of the Apache Software Foundation. For more information on the Apache Software Foundation, please see <http://www.apache.org/>.

## BMC Patrol Integration Guide

---

Progress Orbix v6.3.5 incorporates Xalan-j 2.3.1 from the Apache Software Foundation (<http://www.apache.org>). Such Apache Technology is subject to the following terms and conditions: The Apache Software License, Version 1.1. Copyright (c) 1999 The Apache Software Foundation. All rights reserved. Redistribution and use in source and binary forms, with or without modification, are permitted provided that the following conditions are met: 1. Redistributions of source code must retain the above copyright notice, this list of conditions and the following disclaimer. 2. Redistributions in binary form must reproduce the above copyright notice, this list of conditions and the following disclaimer in the documentation and/or other materials provided with the distribution. 3. The end-user documentation included with the redistribution, if any, must include the following acknowledgment: "This product includes software developed by the Apache Software Foundation (<http://www.apache.org/>)." Alternately, this acknowledgment may appear in the software itself, if and wherever such third-party acknowledgments normally appear. 4. The names "Xalan" and "Apache Software Foundation" and "Apache BCEL" must not be used to endorse or promote products derived from this software without prior written permission. For written permission, please contact [apache@apache.org](mailto:apache@apache.org). 5. Products derived from this software may not be called "Apache", nor may "Apache" appear in their name, without prior written permission of the Apache Software Foundation. THIS SOFTWARE IS PROVIDED ``AS IS" AND ANY EXPRESSED OR IMPLIED WARRANTIES, INCLUDING, BUT NOT LIMITED TO, THE IMPLIED WARRANTIES OF MERCHANTABILITY AND FITNESS FOR A PARTICULAR PURPOSE ARE DISCLAIMED. IN NO EVENT SHALL THE APACHE SOFTWARE FOUNDATION OR ITS CONTRIBUTORS BE LIABLE FOR ANY DIRECT, INDIRECT, INCIDENTAL, SPECIAL, EXEMPLARY, OR CONSEQUENTIAL DAMAGES (INCLUDING, BUT NOT LIMITED TO, PROCUREMENT OF SUBSTITUTE GOODS OR SERVICES; LOSS OF USE, DATA, OR PROFITS; OR BUSINESS INTERRUPTION) HOWEVER CAUSED AND ON ANY THEORY OF LIABILITY, WHETHER IN CONTRACT, STRICT LIABILITY, OR TORT (INCLUDING NEGLIGENCE OR OTHERWISE) ARISING IN ANY WAY OUT OF THE USE OF THIS SOFTWARE, EVEN IF ADVISED OF THE POSSIBILITY OF SUCH DAMAGE. This software consists of voluntary contributions made by many individuals on behalf of the Apache Software Foundation. For more information on the Apache Software Foundation, please see <http://www.apache.org/>.

Progress Orbix v6.3.5 incorporates the Xerces-c++ 2.4 from the Apache Software Foundation (<http://www.apache.org>). Such Apache Technology is subject to the following terms and conditions: The Apache Software License, Version 1.1. Copyright (c) 1999-2001 The Apache Software Foundation. All rights reserved. Redistribution and use in source and binary forms, with or without modification, are permitted provided that the following conditions are met: 1. Redistributions of source code must retain the above copyright notice, this list of conditions and the following disclaimer. 2. Redistributions in binary form must reproduce the above copyright notice, this list of conditions and the following disclaimer in the documentation and/or other materials provided with the distribution. 3. The end-user documentation included with the redistribution, if any, must include the following acknowledgment: "This product includes software developed by the Apache Software Foundation (<http://www.apache.org/>)." Alternately, this acknowledgment may appear in the software itself, if and wherever such third-party acknowledgments normally appear. 4. The names "Xerces" and "Apache Software Foundation" and "Apache BCEL" must not be used to endorse or promote products derived from this software without prior written permission. For written permission, please contact [apache@apache.org](mailto:apache@apache.org). 5. Products derived from this software may not be called "Apache", nor may "Apache" appear in their name, without prior written permission of the Apache Software Foundation. THIS SOFTWARE IS PROVIDED ``AS IS" AND ANY EXPRESSED OR IMPLIED WARRANTIES, INCLUDING, BUT NOT LIMITED TO, THE IMPLIED WARRANTIES OF MERCHANTABILITY AND FITNESS FOR A PARTICULAR PURPOSE ARE DISCLAIMED. IN NO EVENT SHALL THE

---

APACHE SOFTWARE FOUNDATION OR ITS CONTRIBUTORS BE LIABLE FOR ANY DIRECT, INDIRECT, INCIDENTAL, SPECIAL, EXEMPLARY, OR CONSEQUENTIAL DAMAGES (INCLUDING, BUT NOT LIMITED TO, PROCUREMENT OF SUBSTITUTE GOODS OR SERVICES; LOSS OF USE, DATA, OR PROFITS; OR BUSINESS INTERRUPTION) HOWEVER CAUSED AND ON ANY THEORY OF LIABILITY, WHETHER IN CONTRACT, STRICT LIABILITY, OR TORT (INCLUDING NEGLIGENCE OR OTHERWISE) ARISING IN ANY WAY OUT OF THE USE OF THIS SOFTWARE, EVEN IF ADVISED OF THE POSSIBILITY OF SUCH DAMAGE. This software consists of voluntary contributions made by many individuals on behalf of the Apache Software Foundation. For more information on the Apache Software Foundation, please see <<http://www.apache.org/>>.

Progress Orbix v6.3.5 incorporates xerces-j 2.5 from the Apache Software Foundation (<http://www.apache.org>). Such Apache Technology is subject to the following terms and conditions: The Apache Software License, Version 1.1. Copyright (c) 1999-2002 The Apache Software Foundation. All rights reserved. Redistribution and use in source and binary forms, with or without modification, are permitted provided that the following conditions are met: 1. Redistributions of source code must retain the above copyright notice, this list of conditions and the following disclaimer. 2. Redistributions in binary form must reproduce the above copyright notice, this list of conditions and the following disclaimer in the documentation and/or other materials provided with the distribution. 3. The end-user documentation included with the redistribution, if any, must include the following acknowledgment: "This product includes software developed by the Apache Software Foundation (<http://www.apache.org/>)." Alternately, this acknowledgment may appear in the software itself, if and wherever such third-party acknowledgments normally appear. 4. The names "Xerces" and "Apache Software Foundation" must not be used to endorse or promote products derived from this software without prior written permission. For written permission, please contact [apache@apache.org](mailto:apache@apache.org). 5. Products derived from this software may not be called "Apache", nor may "Apache" appear in their name, without prior written permission of the Apache Software Foundation. THIS SOFTWARE IS PROVIDED ``AS IS" AND ANY EXPRESSED OR IMPLIED WARRANTIES, INCLUDING, BUT NOT LIMITED TO, THE IMPLIED WARRANTIES OF MERCHANTABILITY AND FITNESS FOR A PARTICULAR PURPOSE ARE DISCLAIMED. IN NO EVENT SHALL THE APACHE SOFTWARE FOUNDATION OR ITS CONTRIBUTORS BE LIABLE FOR ANY DIRECT, INDIRECT, INCIDENTAL, SPECIAL, EXEMPLARY, OR CONSEQUENTIAL DAMAGES (INCLUDING, BUT NOT LIMITED TO, PROCUREMENT OF SUBSTITUTE GOODS OR SERVICES; LOSS OF USE, DATA, OR PROFITS; OR BUSINESS INTERRUPTION) HOWEVER CAUSED AND ON ANY THEORY OF LIABILITY, WHETHER IN CONTRACT, STRICT LIABILITY, OR TORT (INCLUDING NEGLIGENCE OR OTHERWISE) ARISING IN ANY WAY OUT OF THE USE OF THIS SOFTWARE, EVEN IF ADVISED OF THE POSSIBILITY OF SUCH DAMAGE. This software consists of voluntary contributions made by many individuals on behalf of the Apache Software Foundation. For more information on the Apache Software Foundation, please see <<http://www.apache.org/>>.

Progress Orbix v6.3.5 incorporates the Tomcat 4.0.4 from the Apache Software Foundation (<http://www.apache.org>). Such Apache Technology is subject to the following terms and conditions: The Apache Software License, Version 1.1. Copyright (c) 1999, 2000 The Apache Software Foundation. All rights reserved. Redistribution and use in source and binary forms, with or without modification, are permitted provided that the following conditions are met: 1. Redistributions of source code must retain the above copyright notice, this list of conditions and the following disclaimer. 2. Redistributions in binary form must reproduce the above copyright notice, this list of conditions and the following disclaimer in the documentation and/or other materials provided with the distribution. 3. The end-user documentation included with the

## BMC Patrol Integration Guide

---

redistribution, if any, must include the following acknowledgment: "This product includes software developed by the Apache Software Foundation (<http://www.apache.org/>)." Alternately, this acknowledgment may appear in the software itself, if and wherever such third-party acknowledgments normally appear. 4. The names "The Jakarta Project", "Tomcat" and "Apache Software Foundation" must not be used to endorse or promote products derived from this software without prior written permission. For written permission, please contact [apache@apache.org](mailto:apache@apache.org). 5. Products derived from this software may not be called "Apache", nor may "Apache" appear in their name, without prior written permission of the Apache Software Foundation. THIS SOFTWARE IS PROVIDED ``AS IS" AND ANY EXPRESSED OR IMPLIED WARRANTIES, INCLUDING, BUT NOT LIMITED TO, THE IMPLIED WARRANTIES OF MERCHANTABILITY AND FITNESS FOR A PARTICULAR PURPOSE ARE DISCLAIMED. IN NO EVENT SHALL THE APACHE SOFTWARE FOUNDATION OR ITS CONTRIBUTORS BE LIABLE FOR ANY DIRECT, INDIRECT, INCIDENTAL, SPECIAL, EXEMPLARY, OR CONSEQUENTIAL DAMAGES (INCLUDING, BUT NOT LIMITED TO, PROCUREMENT OF SUBSTITUTE GOODS OR SERVICES; LOSS OF USE, DATA, OR PROFITS; OR BUSINESS INTERRUPTION) HOWEVER CAUSED AND ON ANY THEORY OF LIABILITY, WHETHER IN CONTRACT, STRICT LIABILITY, OR TORT (INCLUDING NEGLIGENCE OR OTHERWISE) ARISING IN ANY WAY OUT OF THE USE OF THIS SOFTWARE, EVEN IF ADVISED OF THE POSSIBILITY OF SUCH DAMAGE. This software consists of voluntary contributions made by many individuals on behalf of the Apache Software Foundation. For more information on the Apache Software Foundation, please see <http://www.apache.org/>.

Progress Orbix v6.3.5 incorporates MCPP 2.6.4 from the MCPP Project. Such technology is subject to the following terms and conditions: Copyright (c) 1998, 2002-2007 Kiyoshi Matsui [kmatsui@t3.rim.or.jp](mailto:kmatsui@t3.rim.or.jp) All rights reserved. This software including the files in this directory is provided under the following license. Redistribution and use in source and binary forms, with or without modification, are permitted provided that the following conditions are met: 1. Redistributions of source code must retain the above copyright notice, this list of conditions and the following disclaimer. 2. Redistributions in binary form must reproduce the above copyright notice, this list of conditions and the following disclaimer in the documentation and/or other materials provided with the distribution. THIS SOFTWARE IS PROVIDED BY THE AUTHOR ``AS IS" AND ANY EXPRESS OR IMPLIED WARRANTIES, INCLUDING, BUT NOT LIMITED TO, THE IMPLIED WARRANTIES OF MERCHANTABILITY AND FITNESS FOR A PARTICULAR PURPOSE ARE DISCLAIMED. IN NO EVENT SHALL THE AUTHOR BE LIABLE FOR ANY DIRECT, INDIRECT, INCIDENTAL, SPECIAL, EXEMPLARY, OR CONSEQUENTIAL DAMAGES (INCLUDING, BUT NOT LIMITED TO, PROCUREMENT OF SUBSTITUTE GOODS OR SERVICES; LOSS OF USE, DATA, OR PROFITS; OR BUSINESS INTERRUPTION) HOWEVER CAUSED AND ON ANY THEORY OF LIABILITY, WHETHER IN CONTRACT, STRICT LIABILITY, OR TORT (INCLUDING NEGLIGENCE OR OTHERWISE) ARISING IN ANY WAY OUT OF THE USE OF THIS SOFTWARE, EVEN IF ADVISED OF THE POSSIBILITY OF SUCH DAMAGE.

Progress Orbix v6.3.5 incorporates Xalan c++ v1.7 from The Apache Software Foundation. Such technology is subject to the following terms and conditions: The Apache Software License, Version 1.1 Copyright (c) 1999-2004 The Apache Software Foundation. All rights reserved. Redistribution and use in source and binary forms, with or without modification, are permitted provided that the following conditions are met: 1. Redistributions of source code must retain the above copyright notice, this list of conditions and the following disclaimer. 2. Redistributions in binary form must reproduce the above copyright notice, this list of conditions and the following disclaimer in the documentation and/or other materials provided with the distribution. 3. The end-user documentation included with the redistribution, if any, must include the follow-



---

ing acknowledgment: "This product includes software developed by the Apache Software Foundation (<http://www.apache.org/>)." Alternately, this acknowledgment may appear in the software itself, if and wherever such third-party acknowledgments normally appear. 4. The names "Xalan" and "Apache Software Foundation" must not be used to endorse or promote products derived from this software without prior written permission. For written permission, please contact [apache@apache.org](mailto:apache@apache.org). 5. Products derived from this software may not be called "Apache", nor may "Apache" appear in their name, without prior written permission of the Apache Software Foundation. THIS SOFTWARE IS PROVIDED ``AS IS'' AND ANY EXPRESSED OR IMPLIED WARRANTIES, INCLUDING, BUT NOT LIMITED TO, THE IMPLIED WARRANTIES OF MERCHANTABILITY AND FITNESS FOR A PARTICULAR PURPOSE ARE DISCLAIMED. IN NO EVENT SHALL THE APACHE SOFTWARE FOUNDATION OR ITS CONTRIBUTORS BE LIABLE FOR ANY DIRECT, INDIRECT, INCIDENTAL, SPECIAL, EXEMPLARY, OR CONSEQUENTIAL DAMAGES (INCLUDING, BUT NOT LIMITED TO, PROCUREMENT OF SUBSTITUTE GOODS OR SERVICES; LOSS OF USE, DATA, OR PROFITS; OR BUSINESS INTERRUPTION) HOWEVER CAUSED AND ON ANY THEORY OF LIABILITY, WHETHER IN CONTRACT, STRICT LIABILITY, OR TORT (INCLUDING NEGLIGENCE OR OTHERWISE) ARISING IN ANY WAY OUT OF THE USE OF THIS SOFTWARE, EVEN IF ADVISED OF THE POSSIBILITY OF SUCH DAMAGE.

=====

This software consists of voluntary contributions made by many individuals on behalf of the Apache Software Foundation and was originally based on software copyright (c) 1999, Lotus Development Corporation., <http://www.lotus.com>. For more information on the Apache Software Foundation, please see <http://www.apache.org/>.

Progress Orbix v6.3.5 incorporates Tcl 8.4.15 from Regents of the University of California, Sun Microsystems, Inc., Scriptics Corporation, and other parties. Such technology is subject to the following terms and conditions: This software is copyrighted by the Regents of the University of California, Sun Microsystems, Inc., Scriptics Corporation, and other parties. The following terms apply to all files associated with the software unless explicitly disclaimed in individual files. The authors hereby grant permission to use, copy, modify, distribute, and license this software and its documentation for any purpose, provided that existing copyright notices are retained in all copies and that this notice is included verbatim in any distributions. No written agreement, license, or royalty fee is required for any of the authorized uses. Modifications to this software may be copyrighted by their authors and need not follow the licensing terms described here, provided that the new terms are clearly indicated on the first page of each file where they apply. IN NO EVENT SHALL THE AUTHORS OR DISTRIBUTORS BE LIABLE TO ANY PARTY FOR DIRECT, INDIRECT, SPECIAL, INCIDENTAL, OR CONSEQUENTIAL DAMAGES ARISING OUT OF THE USE OF THIS SOFTWARE, ITS DOCUMENTATION, OR ANY DERIVATIVES THEREOF, EVEN IF THE AUTHORS HAVE BEEN ADVISED OF THE POSSIBILITY OF SUCH DAMAGE. THE AUTHORS AND DISTRIBUTORS SPECIFICALLY DISCLAIM ANY WARRANTIES, INCLUDING, BUT NOT LIMITED TO, THE IMPLIED WARRANTIES OF MERCHANTABILITY, FITNESS FOR A PARTICULAR PURPOSE, AND NON-INFRINGEMENT. THIS SOFTWARE IS PROVIDED ON AN "AS IS" BASIS, AND THE AUTHORS AND DISTRIBUTORS HAVE NO OBLIGATION TO PROVIDE MAINTENANCE, SUPPORT, UPDATES, ENHANCEMENTS, OR MODIFICATIONS. GOVERNMENT USE: If you are acquiring this software on behalf of the U.S. government, the Government shall have only "Restricted Rights" in the software and related documentation as defined in the Federal Acquisition Regulations (FARs) in Clause 52.227.19 (c) (2). If you are acquiring the software on behalf of the Department of Defense, the software shall be classified as "Commercial Computer Software" and the Government shall have only "Restricted Rights" as defined in Clause 252.227-7013 (c) (1) of DFARs. Notwithstanding the

## BMC Patrol Integration Guide

---

foregoing, the authors grant the U.S. Government and others acting in its behalf permission to use and distribute the software in accordance with the terms specified in this license.

Progress Orbix v6.3.5 incorporates bzip2 1.0.2 from Julian Seward. Such Technology is subject to the following terms and conditions: This program, "bzip2" and associated library "libbzip2", are copyright (C) 1996-2002 Julian R Seward. All rights reserved. Redistribution and use in source and binary forms, with or without modification, are permitted provided that the following conditions are met: 1. Redistributions of source code must retain the above copyright notice, this list of conditions and the following disclaimer. 2.

The origin of this software must not be misrepresented; you must not claim that you wrote the original software. If you use this software in a product, an acknowledgment in the product documentation would be appreciated but is not required. 3. Altered source versions must be plainly marked as such, and must not be misrepresented as being the original software. 4. The name of the author may not be used to endorse or promote products derived from this software without specific prior written permission. THIS SOFTWARE IS PROVIDED BY THE AUTHOR "AS IS" AND ANY EXPRESS OR IMPLIED WARRANTIES, INCLUDING, BUT NOT LIMITED TO, THE IMPLIED WARRANTIES OF MERCHANTABILITY AND FITNESS FOR A PARTICULAR PURPOSE ARE DISCLAIMED. IN NO EVENT SHALL THE AUTHOR BE LIABLE FOR ANY DIRECT, INDIRECT, INCIDENTAL, SPECIAL, EXEMPLARY, OR CONSEQUENTIAL DAMAGES (INCLUDING, BUT NOT LIMITED TO, PROCUREMENT OF SUBSTITUTE GOODS OR SERVICES; LOSS OF USE, DATA, OR PROFITS; OR BUSINESS INTERRUPTION) HOWEVER CAUSED AND ON ANY THEORY OF LIABILITY, WHETHER IN CONTRACT, STRICT LIABILITY, OR TORT (INCLUDING NEGLIGENCE OR OTHERWISE) ARISING IN ANY WAY OUT OF THE USE OF THIS SOFTWARE, EVEN IF ADVISED OF THE POSSIBILITY OF SUCH DAMAGE. Julian Seward, Cambridge, UK.jseward@acm.org bzip2/libbzip2 version 1.0.2 of 30 December 2001.

Progress Orbix v6.3.5 incorporates zlib 1.2.3 from Jean-loup Gailly and Mark Adler. Such Technology is subject to the following terms and conditions: License /\* zlib.h -- interface of the 'zlib' general purpose compression library version 1.2.3, July 18th, 2005 Copyright (C) 1995-2000 Jean-loup Gailly and Mark Adler. This software is provided 'as-is', without any express or implied warranty. In no event will the authors be held liable for any damages arising from the use of this software. Permission is granted to anyone to use this software for any purpose, including commercial applications, and to alter it and redistribute it freely, subject to the following restrictions: 1. The origin of this software must not be misrepresented; you must not claim that you wrote the original software. If you use this software in a product, an acknowledgment in the product documentation would be appreciated but is not required. 2. Altered source versions must be plainly marked as such, and must not be misrepresented as being the original software. 3. This notice may not be removed or altered from any source distribution. Jean-loup Gailly jloup@gzip.org Mark Adler madler@alumni.caltech.edu \*/

Progress Orbix v6.3.5 incorporates the MinML 1.7 from John Wilson. Such Technology is subject to the following terms and conditions: Copyright (c) 1999, John Wilson (tug@wilson.co.uk). All rights reserved. Redistribution and use in source and binary forms, with or without modification, are permitted provided that the following conditions are met: Redistributions of source code must retain the above copyright notice,, this list of conditions and the following disclaimer. Redistributions in binary form must reproduce the above copyright notice, this list of conditions and the following disclaimer in the documentation and/or other materials provided with the distribution. All advertising materials mentioning features or use of this software must display the following acknowledgement: This product includes software developed by John

---

Wilson. The name of John Wilson may not be used to endorse or promote products derived from this software without specific prior written permission. THIS SOFTWARE IS PROVIDED BY JOHN WILSON "AS IS" AND ANY EXPRESS OR IMPLIED WARRANTIES, INCLUDING, BUT NOT LIMITED TO, THE IMPLIED WARRANTIES OF MERCHANTABILITY AND FITNESS FOR A PARTICULAR PURPOSE ARE DISCLAIMED. IN NO EVENT SHALL JOHN WILSON BE LIABLE FOR ANY DIRECT, INDIRECT, INCIDENTAL, SPECIAL, EXEMPLARY, OR CONSEQUENTIAL DAMAGES (INCLUDING, BUT NOT LIMITED TO, PROCUREMENT OF SUBSTITUTE GOODS OR SERVICES; LOSS OF USE, DATA, OR PROFITS; OR BUSINESS INTERRUPTION) HOWEVER CAUSED AND ON ANY THEORY OF LIABILITY, WHETHER IN CONTRACT, STRICT LIABILITY, OR TORT (INCLUDING NEGLIGENCE OR OTHERWISE) ARISING IN ANY WAY OUT OF THE USE OF THIS SOFTWARE, EVEN IF ADVISED OF THE POSSIBILITY OF SUCH DAMAGE.

Progress Orbix v6.3.5 incorporates JDOM vbeta9 from JDOM. Such Technology is subject to the following terms and conditions: LICENSE.txt, v 1.10 2003/04/10 08:36:05 jhunter Exp \$ Copyright (C) 2000-2003 Jason Hunter & Brett McLaughlin. All rights reserved. Redistribution and use in source and binary forms, with or without modification, are permitted provided that the following conditions are met: 1. Redistributions of source code must retain the above copyright notice, this list of conditions, and the following disclaimer. 2. Redistributions in binary form must reproduce the above copyright notice, this list of conditions, and the disclaimer that follows these conditions in the documentation and/or other materials provided with the distribution. 3. The name "JDOM" must not be used to endorse or promote products derived from this software without prior written permission. For written permission, please contact <license AT jdom DOT org>. 4. Products derived from this software may not be called "JDOM", nor may "JDOM" appear in their name, without prior written permission from the JDOM Project Management <pm AT jdom DOT org>. In addition, we request (but do not require) that you include in the end-user documentation provided with the redistribution and/or in the software itself an acknowledgement equivalent to the following: "This product includes software developed by the JDOM Project (<http://www.jdom.org/>)." Alternatively, the acknowledgment may be graphical using the logos available at <http://www.jdom.org/images/logos>. THIS SOFTWARE IS PROVIDED "AS IS" AND ANY EXPRESSED OR IMPLIED WARRANTIES, INCLUDING, BUT NOT LIMITED TO, THE IMPLIED WARRANTIES OF MERCHANTABILITY AND FITNESS FOR A PARTICULAR PURPOSE ARE DISCLAIMED. IN NO EVENT SHALL THE JDOM AUTHORS OR THE PROJECT CONTRIBUTORS BE LIABLE FOR ANY DIRECT, INDIRECT, INCIDENTAL, SPECIAL, EXEMPLARY, OR CONSEQUENTIAL DAMAGES (INCLUDING, BUT NOT LIMITED TO, PROCUREMENT OF SUBSTITUTE GOODS OR SERVICES; LOSS OF USE, DATA, OR PROFITS; OR BUSINESS INTERRUPTION) HOWEVER CAUSED AND ON ANY THEORY OF LIABILITY, WHETHER IN CONTRACT, STRICT LIABILITY, OR TORT (INCLUDING NEGLIGENCE OR OTHERWISE) ARISING IN ANY WAY OUT OF THE USE OF THIS SOFTWARE, EVEN IF ADVISED OF THE POSSIBILITY OF SUCH DAMAGE. This software consists of voluntary contributions made by many individuals on behalf of the JDOM Project and was originally created by Jason Hunter <jhunter AT jdom DOT org> and Brett McLaughlin <brett AT jdom DOT org>. For more information on the JDOM Project, please see <<http://www.jdom.org/>>.

Progress Orbix v6.3.5 incorporates OpenSSL 0.9.8i Copyright (c) 1998-2008 The OpenSSL Project Copyright (c) 1995-1998 Eric A. Young, Tim J. Hudson All rights reserved. Such Technology is subject to the following terms and conditions: The OpenSSL toolkit stays under a dual license, i.e. both the conditions of the OpenSSL License and the original SSLeay license apply to the toolkit. See below for the actual license texts. Actually both licenses are BSD-style Open Source licenses. In case of any license issues related to

OpenSSL please contact [openssl-core@openssl.org](mailto:openssl-core@openssl.org). OpenSSL License - Copyright (c) 1998-2008 The OpenSSL Project. All rights reserved. Redistribution and use in source and binary forms, with or without modification, are permitted provided that the following conditions are met: 1. Redistributions of source code must retain the above copyright notice, this list of conditions and the following disclaimer. 2. Redistributions in binary form must reproduce the above copyright notice, this list of conditions and the following disclaimer in the documentation and/or other materials provided with the distribution. 3. All advertising materials mentioning features or use of this software must display the following acknowledgment: "This product includes software developed by the OpenSSL Project for use in the OpenSSL Toolkit. (<http://www.openssl.org/>)" 4. The names "OpenSSL Toolkit" and "OpenSSL Project" must not be used to endorse or promote products derived from this software without prior written permission. For written permission, please contact [openssl-core@openssl.org](mailto:openssl-core@openssl.org). 5. Products derived from this software may not be called "OpenSSL" nor may "OpenSSL" appear in their names without prior written permission of the OpenSSL Project. 6. Redistributions of any form whatsoever must retain the following acknowledgment: "This product includes software developed by the OpenSSL Project for use in the OpenSSL Toolkit (<http://www.openssl.org/>)" THIS SOFTWARE IS PROVIDED BY THE OpenSSL PROJECT ``AS IS'' AND ANY EXPRESSED OR IMPLIED WARRANTIES, INCLUDING, BUT NOT LIMITED TO, THE IMPLIED WARRANTIES OF MERCHANTABILITY AND FITNESS FOR A PARTICULAR PURPOSE ARE DISCLAIMED. IN NO EVENT SHALL THE OpenSSL PROJECT OR ITS CONTRIBUTORS BE LIABLE FOR ANY DIRECT, INDIRECT, INCIDENTAL, SPECIAL, EXEMPLARY, OR CONSEQUENTIAL DAMAGES (INCLUDING, BUT NOT LIMITED TO, PROCUREMENT OF SUBSTITUTE GOODS OR SERVICES; LOSS OF USE, DATA, OR PROFITS; OR BUSINESS INTERRUPTION) HOWEVER CAUSED AND ON ANY THEORY OF LIABILITY, WHETHER IN CONTRACT, STRICT LIABILITY, OR TORT (INCLUDING NEGLIGENCE OR OTHERWISE) ARISING IN ANY WAY OUT OF THE USE OF THIS SOFTWARE, EVEN IF ADVISED OF THE POSSIBILITY OF SUCH DAMAGE. This product includes cryptographic software written by Eric Young ([ey@cryptsoft.com](mailto:ey@cryptsoft.com)). This product includes software written by Tim Hudson ([tjh@cryptsoft.com](mailto:tjh@cryptsoft.com)). - Original SSLeay License - Copyright (C) 1995-1998 Eric Young ([ey@cryptsoft.com](mailto:ey@cryptsoft.com)) All rights reserved. This package is an SSL implementation written by Eric Young ([ey@cryptsoft.com](mailto:ey@cryptsoft.com)). The implementation was written so as to conform with Netscapes SSL. This library is free for commercial and non-commercial use as long as the following conditions are adhered to. The following conditions apply to all code found in this distribution, be it the RC4, RSA, lhash, DES, etc., code; not just the SSL code. The SSL documentation included with this distribution is covered by the same copyright terms except that the holder is Tim Hudson ([tjh@cryptsoft.com](mailto:tjh@cryptsoft.com)). Copyright remains Eric Young's, and as such any Copyright notices in the code are not to be removed. If this package is used in a product, Eric Young should be given attribution as the author of the parts of the library used. This can be in the form of a textual message at program startup or in documentation (online or textual) provided with the package. Redistribution and use in source and binary forms, with or without modification, are permitted provided that the following conditions are met: 1. Redistributions of source code must retain the copyright notice, this list of conditions and the following disclaimer. 2. Redistributions in binary form must reproduce the above copyright notice, this list of conditions and the following disclaimer in the documentation and/or other materials provided with the distribution. 3. All advertising materials mentioning features or use of this software must display the following acknowledgment: "This product includes cryptographic software written by Eric Young ([ey@cryptsoft.com](mailto:ey@cryptsoft.com))" The word 'cryptographic' can be left out if the routines from the library being used are not cryptographic related :-). 4. If you include any Windows specific code (or a derivative thereof) from the apps directory (application code) you must include an acknowledgement: "This product includes software written by Tim Hudson ([tjh@cryptsoft.com](mailto:tjh@cryptsoft.com))" THIS SOFTWARE IS PROVIDED BY ERIC YOUNG ``AS IS'' AND ANY EXPRESS OR IMPLIED WARRANTIES, INCLUDING, BUT NOT LIMITED TO, THE IMPLIED WARRANTIES OF

---

MERCHANT ABILITY AND FITNESS FOR A PARTICULAR PURPOSE ARE DISCLAIMED. IN NO EVENT SHALL THE AUTHOR OR CONTRIBUTORS BE LIABLE FOR ANY DIRECT, INDIRECT, INCIDENTAL, SPECIAL, EXEMPLARY, OR CONSEQUENTIAL DAMAGES (INCLUDING, BUT NOT LIMITED TO, PROCUREMENT OF SUBSTITUTE GOODS OR SERVICES; LOSS OF USE, DATA, OR PROFITS; OR BUSINESS INTERRUPTION) HOWEVER CAUSED AND ON ANY THEORY OF LIABILITY, WHETHER IN CONTRACT, STRICT LIABILITY, OR TORT (INCLUDING NEGLIGENCE OR OTHERWISE) ARISING IN ANY WAY OUT OF THE USE OF THIS SOFTWARE, EVEN IF ADVISED OF THE POSSIBILITY OF SUCH DAMAGE. The licence and distribution terms for any publically available version or derivative of this code cannot be changed. i.e. this code cannot simply be copied and put under another distribution licence [including the GNU Public Licence.]

Progress Orbix v6.3.5 incorporates PCRE v7.8 from the PCRE Project. Such Technology is subject to the following terms and conditions:

#### PCRE LICENCE

-----  
PCRE is a library of functions to support regular expressions whose syntax and semantics are as close as possible to those of the Perl 5 language. Release 7 of PCRE is distributed under the terms of the "BSD" licence, as specified below. The documentation for PCRE, supplied in the "doc" directory, is distributed under the same terms as the software itself. The basic library functions are written in C and are free-standing. Also included in the distribution is a set of C++ wrapper functions.

#### THE BASIC LIBRARY FUNCTIONS

-----  
Written by: Philip Hazel  
Email local part: ph10  
Email domain: cam.ac.uk  
University of Cambridge Computing Service,  
Cambridge, England.  
Copyright (c) 1997-2008 University of Cambridge  
All rights reserved.

#### THE C++ WRAPPER FUNCTIONS

-----  
Contributed by: Google Inc.  
Copyright (c) 2007-2008, Google Inc.  
All rights reserved.

#### THE "BSD" LICENCE

-----  
Redistribution and use in source and binary forms, with or without modification, are permitted provided that the following conditions are met: Redistributions of source code must retain the above copyright notice, this list of conditions and the following disclaimer. Redistributions in binary form must reproduce the above copyright notice, this list of conditions and the following disclaimer in the documentation and/or other materials provided with the distribution. Neither the name of the University of Cambridge nor the name of

## BMC Patrol Integration Guide

---

Google Inc. nor the names of their contributors may be used to endorse or promote products derived from this software without specific prior written permission. THIS SOFTWARE IS PROVIDED BY THE COPYRIGHT HOLDERS AND CONTRIBUTORS "AS IS" AND ANY EXPRESS OR IMPLIED WARRANTIES, INCLUDING, BUT NOT LIMITED TO, THE IMPLIED WARRANTIES OF MERCHANTABILITY AND FITNESS FOR A PARTICULAR PURPOSE ARE DISCLAIMED. IN NO EVENT SHALL THE COPYRIGHT OWNER OR CONTRIBUTORS BE LIABLE FOR ANY DIRECT, INDIRECT, INCIDENTAL, SPECIAL, EXEMPLARY, OR CONSEQUENTIAL DAMAGES (INCLUDING, BUT NOT LIMITED TO, PROCUREMENT OF SUBSTITUTE GOODS OR SERVICES; LOSS OF USE, DATA, OR PROFITS; OR BUSINESS INTERRUPTION) HOWEVER CAUSED AND ON ANY THEORY OF LIABILITY, WHETHER IN CONTRACT, STRICT LIABILITY, OR TORT (INCLUDING NEGLIGENCE OR OTHERWISE) ARISING IN ANY WAY OUT OF THE USE OF THIS SOFTWARE, EVEN IF ADVISED OF THE POSSIBILITY OF SUCH DAMAGE.

Progress Orbix v6.3.5 incorporates IDL Compiler Front End 1 from Sun Microsystems, Inc. Copyright 1992, 1993, 1994 Sun Microsystems, Inc. Printed in the United States of America. All Rights Reserved. Such technology is subject to the following terms and conditions: This product is protected by copyright and distributed under the following license restricting its use. The Interface Definition Language Compiler Front End (CFE) is made available for your use provided that you include this license and copyright notice on all media and documentation and the software program in which this product is incorporated in whole or part. You may copy and extend functionality (but may not remove functionality) of the Interface Definition Language CFE without charge, but you are not authorized to license or distribute it to anyone else except as part of a product or program developed by you or with the express written consent of Sun Microsystems, Inc. ("Sun"). The names of Sun Microsystems, Inc. and any of its subsidiaries or affiliates may not be used in advertising or publicity pertaining to distribution of Interface Definition Language CFE as permitted herein. This license is effective until terminated by Sun for failure to comply with this license. Upon termination, you shall destroy or return all code and documentation for the Interface Definition Language CFE. INTERFACE DEFINITION LANGUAGE CFE IS PROVIDED AS IS WITH NO WARRANTIES OF ANY KIND INCLUDING THE WARRANTIES OF DESIGN, MERCHANTABILITY AND FITNESS FOR A PARTICULAR PURPOSE, NONINFRINGEMENT, OR ARISING FROM A COURSE OF DEALING, USAGE OR TRADE PRACTICE. INTERFACE DEFINITION LANGUAGE CFE IS PROVIDED WITH NO SUPPORT AND WITHOUT ANY OBLIGATION ON THE PART OF Sun OR ANY OF ITS SUBSIDIARIES OR AFFILIATES TO ASSIST IN ITS USE, CORRECTION, MODIFICATION OR ENHANCEMENT. SUN OR ANY OF ITS SUBSIDIARIES OR AFFILIATES SHALL HAVE NO LIABILITY WITH RESPECT TO THE INFRINGEMENT OF COPYRIGHTS, TRADE SECRETS OR ANY PATENTS BY INTERFACE DEFINITION LANGUAGE CFE OR ANY PART THEREOF. IN NO EVENT WILL SUN OR ANY OF ITS SUBSIDIARIES OR AFFILIATES BE LIABLE FOR ANY LOST REVENUE OR PROFITS OR OTHER SPECIAL, INDIRECT AND CONSEQUENTIAL DAMAGES, EVEN IF SUN HAS BEEN ADVISED OF THE POSSIBILITY OF SUCH DAMAGES. Use, duplication, or disclosure by the government is subject to restrictions as set forth in subparagraph (c)(1)(ii) of the Rights in Technical Data and Computer Software clause at DFARS 252.227-7013 and FAR 52.227-19. Sun, Sun Microsystems and the Sun logo are trademarks or registered trademarks of Sun Microsystems, Inc. Sun-Soft, Inc. 2550 Garcia Avenue, Mountain View, California 94043 NOTE: SunOS, Sun Soft, Sun, Solaris, Sun Microsystems or the Sun logo are trademarks or registered trademarks of Sun Microsystems, Inc.

Progress Orbix v6.3.5 incorporates LibXML2 2.4.24 from Daniel Veillard. Such Technology is subject to the following terms and conditions: Except where otherwise noted in the source code (trio files, hash.c and

---

list.c) covered by a similar license but with different Copyright notices: Copyright (C) 1998-2002 Daniel Veillard. All Rights Reserved. Permission is hereby granted, free of charge, to any person obtaining a copy of this software and associated documentation files (the "Software"), to deal in the Software without restriction, including with out limitation the rights to use, copy, modify, merge, publish, distribute, sublicense, and/or sell copies of the Soft ware, and to permit persons to whom the Software is furnished to do so, subject to the following conditions: The above copyright notice and this permission notice shall be included in all copies or substantial portions of the Software. THE SOFTWARE IS PROVIDED "AS IS", WITHOUT WARRANTY OF ANY KIND, EXPRESS OR IMPLIED, INCLUDING BUT NOT LIMITED TO THE WARRANTIES OF MERCHANTA BILITY, FITNESS FOR A PARTICULAR PURPOSE AND NONINFRINGEMENT. IN NO EVENT SHALL THE DANIEL VEILLARD BE LIABLE FOR ANY CLAIM, DAMAGES OR OTHER LIA BILITY, WHETHER IN AN ACTION OF CONTRACT, TORT OR OTHERWISE, ARISING FROM, OUT OF OR IN CONNECTION WITH THE SOFTWARE OR THE USE OR OTHER DEALINGS IN THE SOFTWARE. Except as contained in this notice, the name of Daniel Veillard shall not be used in advertising or otherwise to promote the sale, use or other dealings in this Software without prior written authorization from him.

=== trio.c, trio.h: Copyright (C) 1998 Bjorn Reese and Daniel Stenberg. Permission to use, copy, modify, and distribute this software for any purpose with or without fee is hereby granted, provided that the above copyright notice and this permission notice appear in all copies. THIS SOFTWARE IS PROVIDED "AS IS" AND WITH OUT ANY EXPRESS OR IMPLIED WARRANTIES, INCLUDING, WITHOUT LIMITATION, THE IMPLIED WARRANTIES OF MERCHANTABILITY AND FITNESS FOR A PARTICULAR PURPOSE. THE AUTHORS AND CONTRIB UTORS ACCEPT NO RESPONSIBILITY IN ANY CONCEIVABLE MANNER. ===== triop.h: Copyright (C) 2000 Bjorn Reese and Daniel Stenberg. Permission to use, copy, modify, and dis tribute this software for any purpose with or without

fee is hereby granted, provided that the above copyright notice and this permission notice appear in all copies. THIS SOFTWARE IS PROVIDED ``AS IS" AND WITHOUT ANY EXPRESS OR IMPLIED WARRANTIES, INCLUDING, WITHOUT LIMITATION, THE IMPLIED WARRANTIES OF MERCHANTABILITY AND FITNESS FOR A PARTIC ULAR PURPOSE. THE AUTHORS AND CONTRIBUTORS ACCEPT NO RESPONSIBILITY IN ANY CONCEIVABLE MANNER.

===== hash.c: Copyright (C) 2000 Bjorn Reese and Daniel Veillard. Permission to use, copy, modify, and distribute this software for any purpose with or without fee is hereby granted, provided that the above copyright notice and this permis sion notice appear in all copies. THIS SOFTWARE IS PROVIDED ``AS IS" AND WITHOUT ANY EXPRESS OR IMPLIED WARRANTIES, INCLUDING, WITHOUT LIMITATION, THE IMPLIED WARRANTIES OF MERCHANT I BILITY AND FITNESS FOR A PARTICULAR PURPOSE. THE AUTHORS AND CONTRIBUTORS ACCEPT NO RESPONSIBILITY IN ANY CONCEIVABLE MANNER.

===== list.c: Copyright (C) 2000 Gary Pennington and Daniel Veillard. Permission to use, copy, modify, and distribute this software for any purpose with or without fee is hereby granted, provided that the above copyright notice and this permission notice appear in all copies. THIS SOFTWARE IS PROVIDED ``AS IS" AND WITHOUT ANY EXPRESS OR IMPLIED WARRANTIES, INCLUDING, WITHOUT LIMITATION, THE IMPLIED WARRANTIES OF MERCHANTABILITY AND FITNESS FOR A PARTICULAR PURPOSE. THE AUTHORS AND CONTRIBUTORS ACCEPT NO RESPONSIBILITY IN ANY CONCEIVABLE MANNER. ===

triodef.h, trionan.c, trionan.h: Copyright (C) 2001 Bjorn Reese Permission to use, copy, modify, and distribute this soft ware for any purpose with or without fee is hereby granted, provided that the above copyright notice and this permis sion notice appear in all copies. THIS SOFTWARE IS PROVIDED ``AS IS" AND

## BMC Patrol Integration Guide

---

WITHOUT ANY EXPRESS OR IMPLIED WARRANTIES, INCLUDING, WITHOUT LIMITATION, THE IMPLIED WARRANTIES OF MERCHANTABILITY AND FITNESS FOR A PARTICULAR PURPOSE. THE AUTHORS AND CONTRIBUTORS ACCEPT NO RESPONSIBILITY IN ANY CONCEIVABLE MANNER.

==== triostr.c, triostr.h: Copyright (C) 2001 Bjorn Reese and Daniel Stenberg.

Permission to use, copy, modify, and distribute this software for any purpose with or without fee is hereby granted, provided that the above copyright notice and this permission notice appear in all copies. THIS SOFTWARE IS PROVIDED ``AS IS'' AND WITHOUT ANY EXPRESS OR IMPLIED WARRANTIES, INCLUDING, WITHOUT LIMITATION, THE IMPLIED WARRANTIES OF MERCHANTABILITY AND FITNESS FOR A PARTICULAR PURPOSE. THE AUTHORS AND CONTRIBUTORS ACCEPT NO RESPONSIBILITY IN ANY CONCEIVABLE MANNER.

Progress Orbix v6.3.5 incorporates ICU library 2.6 from IBM. Such Technology is subject to the following terms and conditions: Copyright (c) 1995-2009 International Business Machines Corporation and others. All rights reserved. Permission is hereby granted, free of charge, to any person obtaining a copy of this software and associated documentation files (the "Software"), to deal in the Software without restriction, including without limitation the rights to use, copy, modify, merge, publish, distribute, and/or sell copies of the Software, and to permit persons to whom the Software is furnished to do so, provided that the above copyright notice(s) and this permission notice appear in all copies of the Software and that both the above copyright notice(s) and this permission notice appear in supporting documentation. THE SOFTWARE IS PROVIDED "AS IS", WITHOUT WARRANTY OF ANY KIND, EXPRESS OR IMPLIED, INCLUDING BUT NOT LIMITED TO THE WARRANTIES OF MERCHANTABILITY, FITNESS FOR A PARTICULAR PURPOSE AND NONINFRINGEMENT OF THIRD PARTY RIGHTS. IN NO EVENT SHALL THE COPYRIGHT HOLDER OR HOLDERS INCLUDED IN THIS NOTICE BE LIABLE FOR ANY CLAIM, OR ANY SPECIAL INDIRECT OR CONSEQUENTIAL DAMAGES, OR ANY DAMAGES WHATSOEVER RESULTING FROM LOSS OF USE, DATA OR PROFITS, WHETHER IN AN ACTION OF CONTRACT, NEGLIGENCE OR OTHER TORTIOUS ACTION, ARISING OUT OF OR IN CONNECTION WITH THE USE OR PERFORMANCE OF THIS SOFTWARE. Except as contained in this notice, the name of a copyright holder shall not be used in advertising or otherwise to promote the sale, use or other dealings in this Software without prior written authorization of the copyright holder. All trademarks and registered trademarks mentioned herein are the property of their respective owners.

Updated: 14-Jul-2011



# Contents

<b>List of Figures</b>	<b>v</b>
<b>Preface</b>	<b>vii</b>
What is covered in this book	vii
Who should read this book	vii
Organization of this book	vii
Related documentation	viii
Online help	viii
Suggested path for further reading	viii
Additional resources for help	ix
Document conventions	ix
<b>Chapter 1 Integrating with BMC Patrol™</b>	<b>1</b>
Introduction	2
The IONA BMC Patrol Integration	6
<b>Chapter 2 Configuring your IONA Product</b>	<b>9</b>
Setting up your Artix Environment	10
Setting up your Orbix Environment	14
<b>Chapter 3 Using the IONA BMC Patrol Integration</b>	<b>19</b>
Setting up your BMC Patrol Environment	20
Using the IONA Knowledge Module	22
<b>Glossary</b>	<b>29</b>
<b>Index</b>	<b>33</b>

## CONTENTS

# List of Figures

Figure 1: Overview of the IONA BMC Patrol Integration	4
Figure 2: IONA Server Running in BMC Patrol	7
Figure 3: BMC Patrol Displaying Alarms	8
Figure 4: Deployment Bundle Wizard	11
Figure 5: Run Deployer Dialog	12
Figure 6: Orbix Configuration GUI	14
Figure 7: Selecting EMS Configuration	15
Figure 8: Selecting Performance Logging	16
Figure 9: Graphing for IONAAvgResponseTime	25
Figure 10: Alarms for IONAAvgResponseTime	26

## LIST OF FIGURES

# Preface

---

## What is covered in this book

IONA's products support integration with Enterprise Management Systems such as IBM Tivoli™, HP OpenView™, CA Unicenter™, and BMC Patrol™. This guide explains how to integrate Orbix and Artix with BMC Patrol.

---

## Who should read this book

This guide is aimed at system administrators using BMC Patrol to manage distributed enterprise environments, and developers writing distributed enterprise applications. Administrators do not require detailed knowledge of the technology that is used to create distributed enterprise applications.

This book assumes that you already have a good working knowledge of the BMC Patrol range of products.

---

## Organization of this book

This book contains the following chapters:

- [Chapter 1](#) introduces Enterprise Management Systems, and IONA's integration with BMC Patrol.
- [Chapter 2](#) describes how to configure your IONA product for integration with BMC Patrol.
- [Chapter 3](#) describes how to configure your BMC Patrol environment for integration with IONA products.

---

## Related documentation

The Orbix library includes the following related books:

- *Orbix Management User's Guide*
- *Orbix Administrator's Guide*
- *Orbix Management Programmer's Guide*

The Artix library includes the following related books:

- *Deploying and Managing Artix Solutions*
- *Designing Artix Solutions with Artix Designer*
- *IONA Tivoli Integration Guide*

For the latest versions of all IONA product documentation, see the IONA web site:

<http://communities.progress.com/pcom/docs/DOC-105215>

---

## Online help

Online help is provided for the IONA integration with BMC Enterprise Management Systems. See your BMC Patrol **Help** menu for details.

---

## Suggested path for further reading

If you are new to Orbix, you should read the documentation in the following order:

1. *Orbix Management User's Guide*

This guide explains how to use the IONA Administrator management tool, and how to configure the Orbix management service for integration with other management tools.

2. *Orbix Administrator's Guide*

This guide explains in detail how to configure and manage the components of an Orbix environment.

### 3. *Orbix Management Programmer's Guide*

This guide explains how programmers can enable applications to be managed by IONA Administrator.

---

## Additional resources for help

The [IONA Knowledge Base](http://www.iona.com/support/knowledge_base/index.xml)

([http://www.iona.com/support/knowledge\\_base/index.xml](http://www.iona.com/support/knowledge_base/index.xml)) contains helpful articles, written by IONA experts, about Artix and other products.

The [IONA Update Center](http://www.iona.com/support/updates/index.xml) (<http://www.iona.com/support/updates/index.xml>) contains the latest releases and patches for IONA products.

If you need help with this or any other IONA products, go to [IONA Online Support](http://www.iona.com/support/index.xml) (<http://www.iona.com/support/index.xml>).

Comments on IONA documentation can be sent to [docs-support@iona.com](mailto:docs-support@iona.com).

---

## Document conventions

This book uses the following typographical and keying conventions.

### Typographical conventions:

Constant width      Constant width (courier font) in normal text represents portions of code and literal names of items such as classes, functions, variables, and data structures. For example, text might refer to the `CORBA::Object` class.

Constant width paragraphs represent code examples or information a system displays on the screen. For example:

```
#include <stdio.h>
```

*Italic*                      Italic words in normal text represent *emphasis* and *new terms*.

Italic words or characters in code and commands represent variable values you must supply, such as arguments to commands or path names for your particular system. For example:

```
% cd /users/your_name
```

**Note:** Some command examples may use angle brackets to represent variable values you must supply. This is an older convention that is replaced with *italic* words or characters.

**Keying conventions:**

- No prompt                      When a command's format is the same for multiple platforms, a prompt is not used.
- %                                      A percent sign represents the UNIX command shell prompt for a command that does not require root privileges.
- #                                      A number sign represents the UNIX command shell prompt for a command that requires root privileges.
- >                                      The notation > represents the DOS or Windows command prompt.
- ...  
·  
·  
·                                      Horizontal or vertical ellipses in format and syntax descriptions indicate that material has been eliminated to simplify a discussion.
- [ ]                                      Brackets enclose optional items in format and syntax descriptions.
- { }                                      Braces enclose a list from which you must choose an item in format and syntax descriptions.
- |                                      A vertical bar separates items in a list of choices enclosed in { } (braces) in format and syntax descriptions.



# Integrating with BMC Patrol™

*This chapter introduces the integration of IONA products with the BMC Patrol™ Enterprise Management System. It describes the requirements and main components of this integration.*

---

**In this chapter**

This chapter contains the following sections:

<a href="#">Introduction</a>	<a href="#">page 2</a>
<a href="#">The IONA BMC Patrol Integration</a>	<a href="#">page 6</a>

# Introduction

---

## Overview

IONA's products support integration with Enterprise Management Systems such as BMC Patrol. This section includes the following topics:

- [“The application life cycle”](#).
  - [“Enterprise Management Systems”](#).
  - [“IONA EMS integration”](#).
  - [“IONA BMC Patrol features”](#).
  - [“How it works”](#).
- 

## The application life cycle

Most enterprise applications go through a rigorous development and testing process before they are put into production. When applications are in production, developers rarely expect to manage those applications. They usually move on to new projects, while the day-to-day running of the applications is managed by a production team. In some cases, the applications are deployed in a data center that is owned by a third party, and the team that monitors the applications belongs to a different organization.

---

## Enterprise Management Systems

Different organizations have different approaches to managing their production environment, but most will have at least one *Enterprise Management System* (EMS).

The main Enterprise Management Systems are BMC Patrol™, IBM Tivoli™, HP OpenView™, and CA Unicenter™. These systems are popular because they give a top-to-bottom view of every part of the IT infrastructure.

This means that if an application fails because the `/tmp` directory fills up on a particular host, for example, the disk space is reported as the fundamental reason for the failure. The various application errors that arise are interpreted as symptoms of the underlying problem with disk space. This is much better than being swamped by an event storm of higher-level failures that all originate from the same underlying problem. This is the fundamental strength of integrated management.

---

**IONA EMS integration**

IONA's Orbix and Artix products are designed to integrate with Enterprise Management Systems. IONA's common management instrumentation layer provides a base that can be used to integrate with any EMS.

In addition, IONA provides packaged integrations that provide out-of-the-box integration with major EMS products. This guide describes IONA's integration with BMC Patrol products.

---

**IONA BMC Patrol features**

The IONA BMC Patrol integration performs the following key enterprise management tasks:

- Posting an event when a server crashes. This enables programmed recovery actions to be taken.
- Tracking key server metrics (for example, server response times). Alarms are triggered when these go out of bounds.

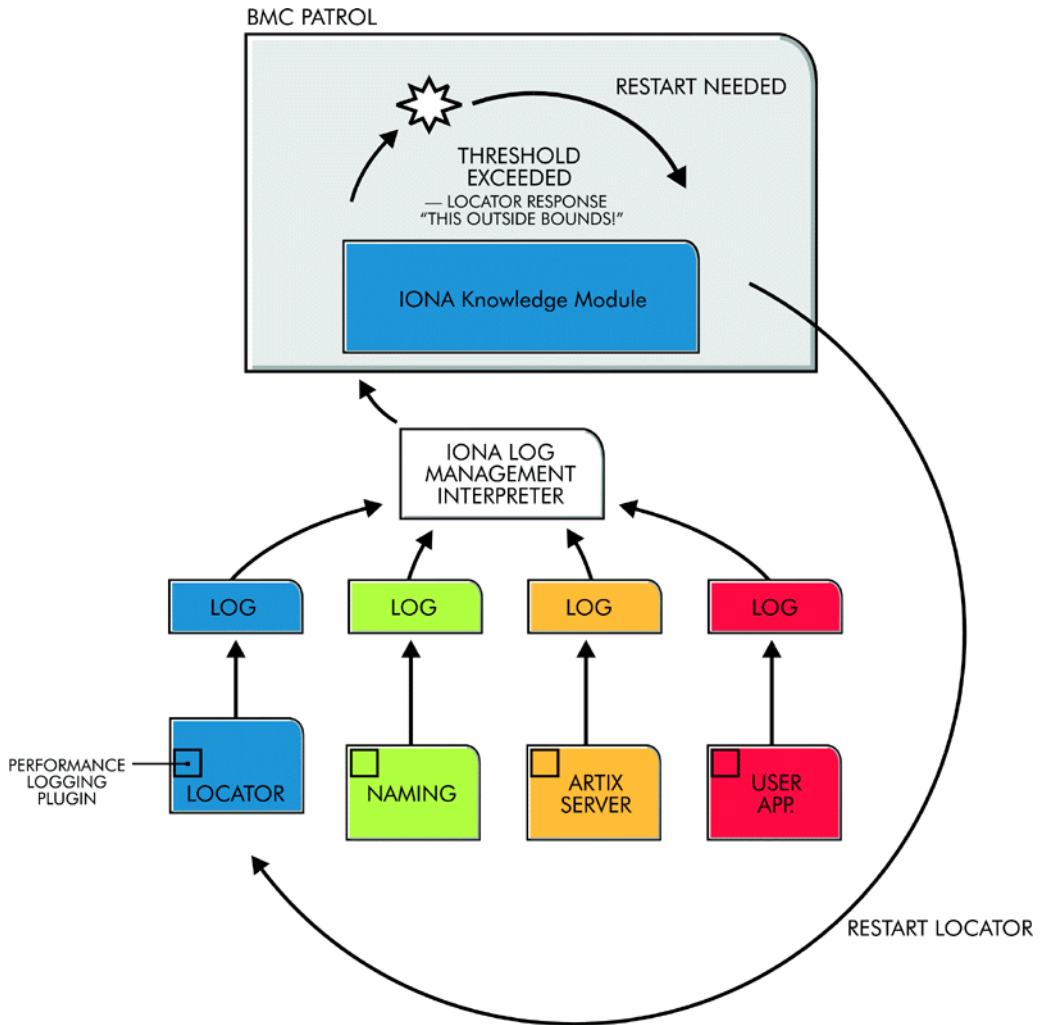
The server metrics tracked by the IONA BMC Patrol integration include the number of invocations received, and the average, maximum and minimum response times. The IONA BMC Patrol integration also enables you to track these metrics for individual operations. Events can be generated when any of these parameters go out of bounds. You can also perform a number of actions on servers including stopping, starting and restarting.

---

**How it works**

In the IONA BMC Patrol integration, key server metrics are logged by the IONA performance logging plugins. Log file interpreting utilities are then used to analyze the logged data.

The IONA BMC Patrol integration provides IONA Knowledge Modules, which conform to standard BMC Software Knowledge Module design and operation. [Figure 1 on page 4](#) shows a simplified view of how the IONA Knowledge Modules work. In this example, an alarm is triggered when the locator becomes unresponsive, and this results in an action to restart the server.



**Figure 1:** Overview of the IONA BMC Patrol Integration

The IONA performance logging plugins collect data relating to server response times and log it periodically in the performance logs. The IONA Knowledge Module executes parameter collection periodically on each host, and uses the IONA log file interpreter to collect and summarize the logged data.

The IONA Knowledge Module compares the response times and other values against the defined alarm ranges for each parameter and issues an alarm event if a threshold has been breached. These events can be analyzed and appropriate action taken automatically (for example, restart a server). Alternatively, the user can intervene manually and execute a BMC menu command to stop, start or restart the offending server.

---

# The IONA BMC Patrol Integration

---

## Overview

This section describes the requirements and main components of IONA's BMC Patrol integration. It includes the following topics:

- [“IONA requirements”](#).
  - [“BMC Patrol requirements”](#).
  - [“Main components”](#).
  - [“Examples”](#).
  - [“Further information”](#).
- 

## IONA requirements

IONA's Artix and Orbix products are fully integrated with BMC Patrol. You must have at least one of the following installed:

- Artix 2.0.1
  - Orbix 6.1 or 6.2
- 

## BMC Patrol requirements

To use the IONA BMC Patrol integration, you must have BMC Patrol 3.4 or higher. The IONA BMC Patrol integration is compatible with the BMC Patrol 7 Central Console.

---

## Main components

The IONA BMC Patrol integration consists of the following Knowledge Modules (KM):

- `IONA_SERVERPROVIDER`
- `IONA_OPERATIONPROVIDER`

The `IONA_SERVERPROVIDER.km` tracks key metrics associated with your IONA servers on a particular host. It also enables servers to be started, stopped, or restarted, if suitably configured.

The `IONA_OPERATIONPROVIDER.km` tracks key metrics associated with individual operations on each server.

## Examples

Figure 2 shows an example of the IONA\_SERVERPROVIDER Knowledge Module displayed in BMC Patrol. The window in focus shows the IONA performance metrics that are available for an operation named `query_reservation`, running on a machine named `stimulator`.

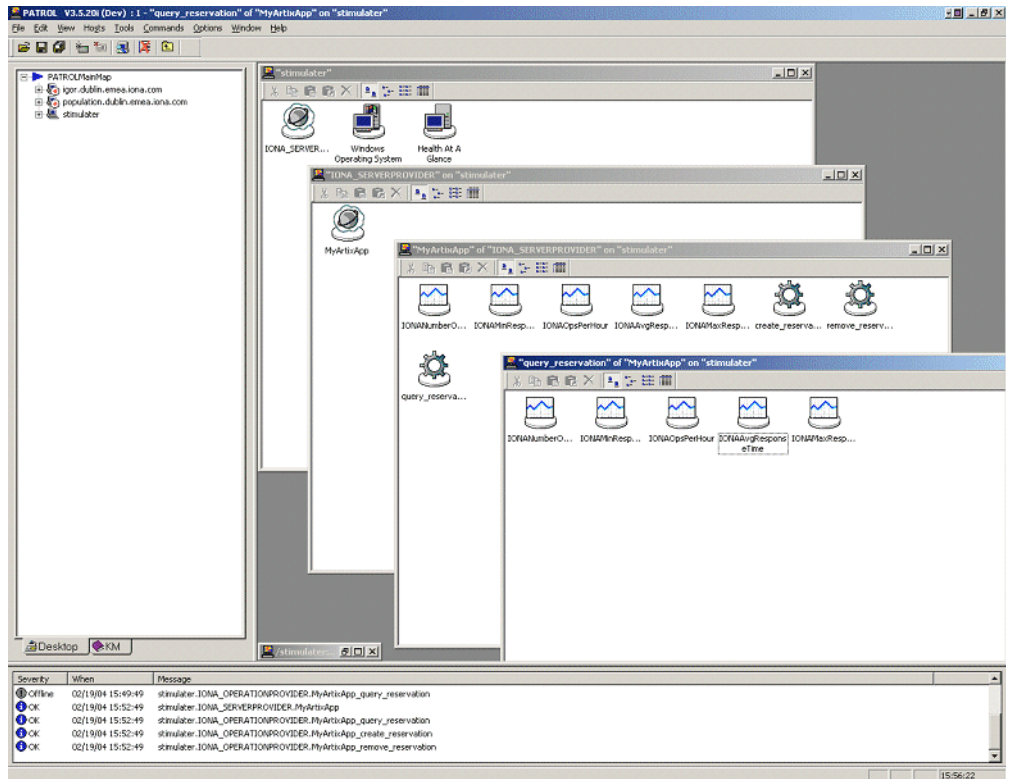


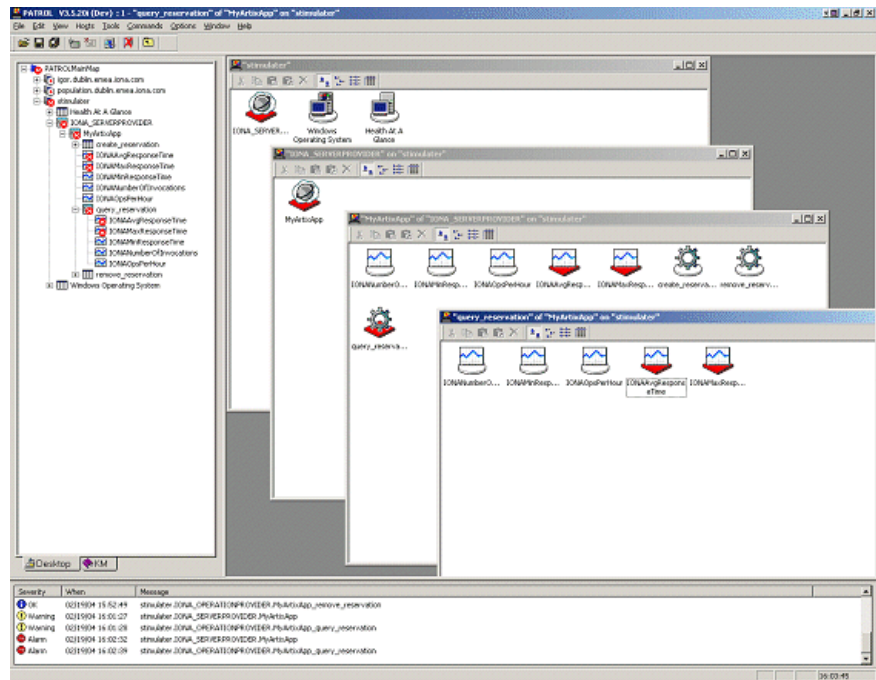
Figure 2: IONA Server Running in BMC Patrol

The IONA server performance metrics include the following:

- IONAAvgResponseTime
- IONAMaxResponseTime
- IONAMinResponseTime
- IONANumInvocations
- IONAOpsPerHour

For more details, see “Using the IONA Knowledge Module” on page 22.

Figure 3 shows alarms for server metrics, for example, IONAAvgResponseTime. This measures the average response time of all operations on this server during the last collection cycle.



**Figure 3:** BMC Patrol Displaying Alarms

### Further information

For a detailed description of Knowledge Modules, see your BMC Patrol documentation.



# Configuring your IONA Product

*This chapter explains the steps that you need to perform in your IONA product to configure integration with BMC Patrol.*

---

**In this chapter**

This chapter contains the following sections:

<a href="#">Setting up your Artix Environment</a>	page 10
<a href="#">Setting up your Orbix Environment</a>	page 14

---

# Setting up your Artix Environment

---

## Overview

The best way to learn how to use the BMC Patrol integration is to start with a host that has both BMC Patrol and Artix installed. This section explains how to make your Artix servers visible to BMC Patrol. It includes the following topics:

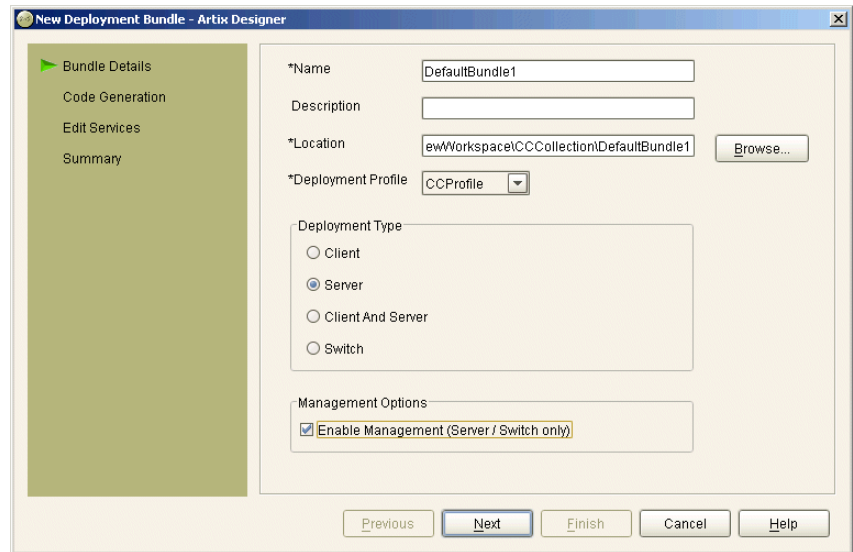
- “Enabling management”.
  - “Generating EMS configuration files”.
  - “The servers.conf file”.
  - “The server\_commands.txt file”.
  - “Further information”.
- 

## Enabling management

You can use the **Artix Designer** GUI tool to enable management for your Artix applications. To enable management, perform the following steps:

1. Select **File|New Deployment Profile**, and follow the steps in the wizard. This creates a platform-specific deployment profile. Typically, you would have a separate profile for each deployment machine (for example, Windows or UNIX).
2. Select **File|New Deployment Bundle**, and follow the steps in the wizard. In the **Bundle Details** screen, select the **Enable Management** checkbox, as shown in [Figure 4](#).  
You can create as many deployment bundles as you like, but they must all be associated with one deployment profile.

For more detailed information about deployment bundles and profiles, and using the **Artix Designer** tool, see *Designing Artix Solutions*.

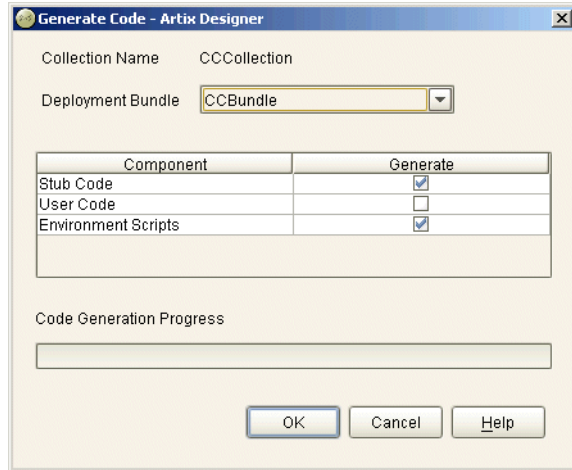


**Figure 4:** *Deployment Bundle Wizard*

## Generating EMS configuration files

You can use **Artix Designer** to generate EMS configuration files for your Artix applications. To generate these files, perform the following steps:

1. Select **Tools|Generate Code**.
2. Ensure that the **Generate** checkbox for **Environment Scripts** is selected, as shown in [Figure 5](#).
3. Select **OK**.



**Figure 5:** *Run Deployer Dialog*

The **Artix Designer** tool generates two files that are used to configure the IONA BMC Patrol integration. These files are as follows:

- `servers.conf`
- `server_commands.txt`

These generated files are created in the `etc` directory of your Artix deployment bundle, for example:

```
C:\artix\myWorkspace\myCollection\myBundle\etc
```

To track your application in BMC Patrol, you must copy these files into your BMC installation, for example:

```
$PATROL_HOME/lib/iona/conf
```

---

**The servers.conf file**

When you open the `servers.conf` file, you will see an entry such as the following:

```
myapplication, 1, /path/to/myproject/log/myapplication_perf.log
```

This example entry instructs BMC Patrol to track the `myapplication` server. It reads performance data from the following log file:

```
/path/to/myproject/log/myapplication_perf.log
```

---

**The server\_commands.txt file**

When you open the `server_commands.txt` file, you will see entries like the following:

```
myapplication,start=/path/to/myproject/bin/start_myapplication.sh  
myapplication,stop=/path/to/myproject/bin/stop_myapplication.sh  
myapplication,restart=/path/to/myproject/bin/restart_myapplication.sh
```

Each entry in this file references a script that can be used to stop, start, or restart the `myapplication` server.

---

**Further information**

For details of how to manually configure servers to use the performance logging, see [“Setting up your BMC Patrol Environment” on page 20](#).

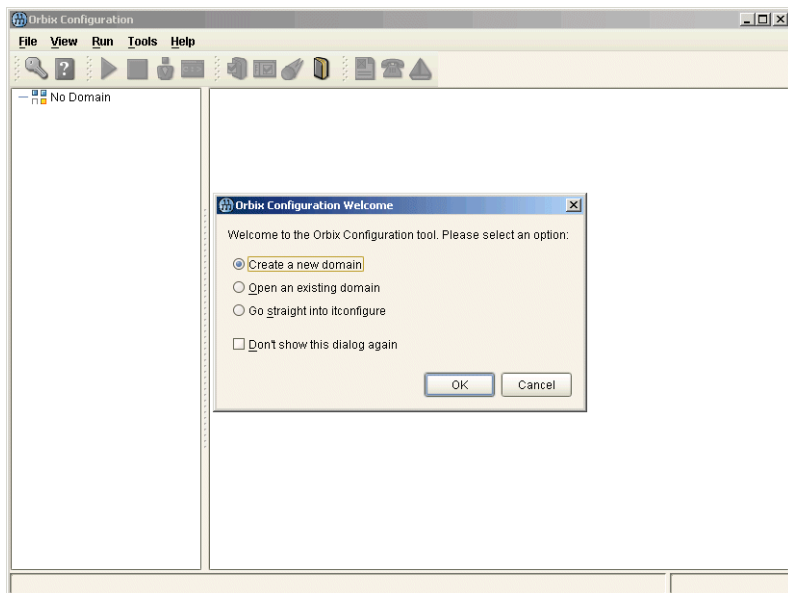
For a complete explanation of configuring performance logging plugins, see the *Orbix Management User's Guide*.

# Setting up your Orbix Environment

## Overview

The best way to learn how to use the BMC Patrol integration is to start with a host that has both BMC Patrol and Orbix installed. This section explains the configuration steps in your Orbix environment. It includes the following:

- “Creating an Orbix configuration domain”.
- “Generating EMS configuration files”.
- “Configuring performance logging”.
- “EMS configuration files”.
- “The servers.conf file”.
- “The server\_commands.txt file”.
- “Further information”.



**Figure 6:** *Orbix Configuration GUI*

## Creating an Orbix configuration domain

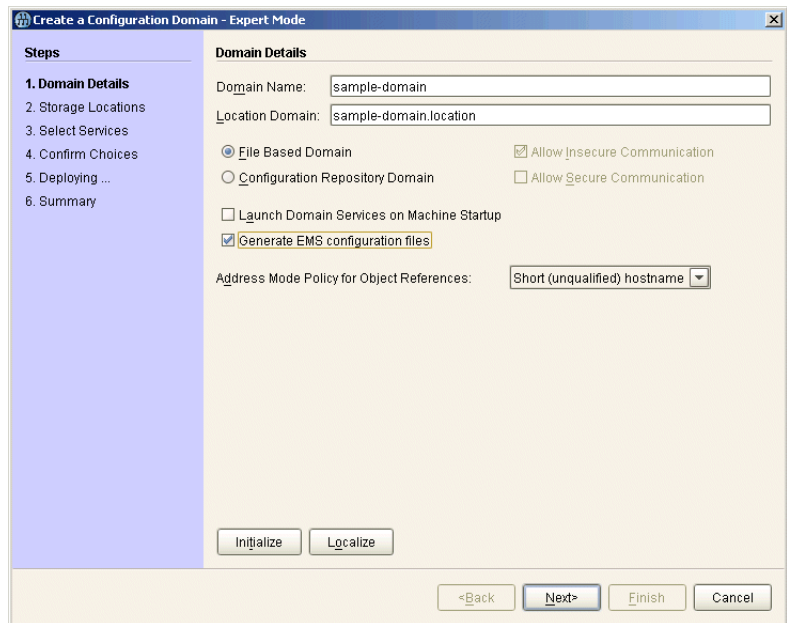
You must first create the Orbix configuration domain that you want to monitor using the **Orbix Configuration** GUI.

To launch this tool, enter `itconfigure` on the command line. The GUI is shown in [Figure 6](#).

## Generating EMS configuration files

To generate EMS configuration files, perform the following steps:

1. Click **Go straight into itconfigure** in the welcome dialog.
1. Select **File|New|Expert** from the GUI main menu. This displays the **Domain Details** screen, as shown in [Figure 7](#).
2. Select the **Generate EMS Configuration Files** checkbox. This generates the configuration files required for your BMC Patrol integration.



**Figure 7:** *Selecting EMS Configuration*

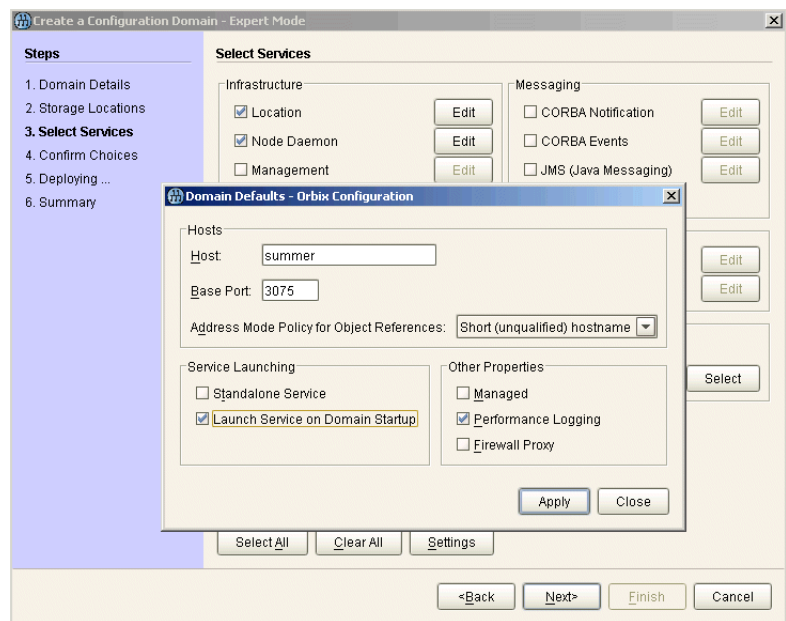
3. Proceed as normal following the steps in the wizard until you get to the **Select Services** screen (see [“Configuring performance logging”](#)).

**Configuring performance logging**

To configure performance logging, do the following:

1. In the **Select Services** screen, click **Settings** to launch the **Domain Defaults** dialog, shown in [Figure 8](#).
2. Select the **Performance Logging** option in the **Other Properties** box, shown in [Figure 8](#). This ensures that, by default, all your selected services are configured for monitoring.

If you want to enable BMC Patrol to start, stop, or restart your servers, also select the **Launch Service on Domain Startup** option in the **Service Launching** box.



**Figure 8:** *Selecting Performance Logging*

Alternatively, you can configure these settings separately for each service by selecting the service, and clicking the **Edit** button.

3. Click **Apply**, and then **Close**.
4. Click **Next** to view a **Confirmation** screen for your selected configuration.



5. Click **Next** to deploy your configuration.
6. Click **Finish** to exit.

**Note:** When you configure EMS integration, you must also configure performance logging. This is not optional. However, you can configure performance logging without EMS integration. For full details, see the *Orbix Management User's Guide*.

---

## EMS configuration files

When the domain is created, you can start it like any other domain, using the start script in your `<orbix-install>/etc/bin` directory. Selecting the performance logging feature has enabled some extra configuration and logging. In your `<orbix-install>/var/domain-name` directory, you will find the following EMS configuration files:

- `servers.conf`
- `server_commands.txt`

---

## The servers.conf file

When you open the `servers.conf` file, you will see a number of entries in the following form:

*servername, number, /path/to/a/log/file*

For example:

```
mydomain_locator_myhost, 1,  
/opt/iona/var/mydomain/logs/locator_myhost_perf.log
```

The `servers.conf` file lists the servers that you want BMC Patrol to monitor on a particular host. To begin with, assume that you are running all services in the domain on one host. For example, assume your `servers.conf` file has the above entry. When you have started your domain, you should see a log file in the following location:

```
/opt/iona/var/mydomain/logs/locator_perf.log
```

There will be one of these files for each server that you want to monitor. The IONA resource model uses the `servers.conf` file to locate these logs and then scans the logs for information about the server's key performance indicators.

---

### The `server_commands.txt` file

When you open the `server_commands.txt` file, you will see a number of entries of the form:

```
servername,action=/path/to/script
```

For example:

```
mydomain_locator_myhost,start
=/opt/iona/var/mydomain/locator_myhost_start.sh
```

Each entry in this file contains a pointer to a script that implements an action on a particular server. In this example, the action is a start action for the server `mydomain_locator_myhost`. When BMC Patrol receives an instruction to start the locator in a domain named `mydomain` on a host named `myhost`, it looks up the `server_commands.txt` file on `myhost`, and execute the script pointed to in this entry.

---

### Further information

For details of how to manually configure servers to use the performance logging, see [“Configuring an Artix Production Environment” on page 30](#).

For a complete explanation of configuring performance logging plugins, see the *Orbix Management User's Guide*.

# Using the IONA BMC Patrol Integration

*This chapter explains the steps that you must perform in your BMC Patrol environment to monitor IONA applications. It also describes the IONA Knowledge Module and how to use it to monitor servers and operations. It assumes that you already have a good working knowledge of BMC Patrol.*

---

**In this chapter**

This chapter contains the following sections:

Setting up your BMC Patrol Environment	page 20
Using the IONA Knowledge Module	page 22

---

# Setting up your BMC Patrol Environment

---

## Overview

To enable monitoring of the Artix or Orbix servers on your host, you must first perform the following steps in your BMC Patrol environment:

1. [“Install the IONA Knowledge Module”](#).
  2. [“Set up your Java environment”](#).
  3. [“Set up your EMS configuration files”](#).
  4. [“View your servers in the BMC Console”](#).
- 

## Install the IONA Knowledge Module

The IONA BMC Patrol integration is shipped in two formats: `IONA_km.zip` for Windows platforms, and `IONA_km.tgz` for UNIX platforms.

### Windows

Use WinZip to unzip `IONA_km.zip`. Extract this file into your `%PATROL_HOME%` directory.

If this is successful, the following directory is created:

```
%PATROL_HOME%\lib\iona
```

### UNIX

Copy the `IONA_km.tgz` file into `$PATROL_HOME`, and enter the following commands:

```
$ cd $PATROL_HOME
$ gunzip IONA_km.tgz
$ tar xvf IONA_km.tar
```

---

## Set up your Java environment

The IONA Knowledge Module requires a Java Runtime Environment (JRE). If your BMC Patrol installation already has a `$PATROL_HOME/lib/jre` directory, it should work straightaway. If not, you must setup a JRE (version 1.3.1 or later) on your machine as follows:

1. Copy the `jre` directory from your Java installation into `$PATROL_HOME/lib`. You should now have a directory structure that includes `$PATROL_HOME/lib/jre`.
2. Confirm that you can run `$PATROL_HOME/lib/jre/bin/java`.

---

### Set up your EMS configuration files

In [Chapter 2](#), you generated the following EMS configuration files:

- `servers.conf`
- `server_commands.txt`

Copy these generated files to `$PATROL_HOME/lib/iona/conf`.

---

### View your servers in the BMC Console

To view your servers in the **BMC Console**, and check that your setup is correct, perform the following steps:

1. Start your **BMC Console** and connect to the **BMC Patrol Agent** on the host where you have installed the IONA Knowledge Module.
2. In the **Load KMs** dialog, open the `$PATROL_HOME/lib/knowledge` directory, and select the `IONA_SERVER.kml` file. This will load the `IONA_SERVERPROVIDER` and `IONA_OPERATIONPROVIDER` Knowledge Modules.
3. In your **Main Map**, the list of servers that were configured in the `servers.conf` file should be displayed. If they are not currently running, they are shown as offline.

You are now ready to manage these servers using BMC Patrol.

# Using the IONA Knowledge Module

## Overview

This section describes the IONA Knowledge Module and explains how to use it to monitor servers and operations. It includes the following topics:

- “Server Provider parameters”.
- “Monitoring servers”.
- “Monitoring operations”.
- “Operation parameters”.
- “Starting, stopping and restarting servers”.
- “Troubleshooting”.

## Server Provider parameters

The `IONA_SERVERPROVIDER` class represents instances of IONA server or client applications. The parameters exposed in the Knowledge Module are shown in [Table 1](#).

**Table 1:** *IONA Server Provider Parameters*

Parameter Name	Default Warning	Default Alarm	Description
IONAAvgResponseTime	1000–5000	> 5000	The average response time (in milliseconds) of all operations on this server during the last collection cycle.
IONAMaxResponseTime	1000–5000	> 5000	The slowest operation response time (in milliseconds) during the last collection cycle.
IONAMinResponseTime	1000–5000	> 5000	The quickest operation response time (in milliseconds) during the last collection cycle.
IONANumInvocations	10000–100000	> 100000	The number of invocations received during the last collection period.
IONAOpsPerHour	1000000–10000000	> 10000000	The throughput (in Operations Per Hour) based on the rate calculated from the last collection cycle.

## Monitoring servers

You can use the parameters shown in [Table 1](#) to monitor the load and response times of your IONA servers.

The Default Alarm ranges can be overridden on any particular instance, or on all instances, using the BMC Patrol 7 Central console. You can do this as follows:

1. In the **PATROL Central** console's **Main Map**, right click on the selected parameter and choose the **Properties** menu item.
2. In the **Properties** pane, select the **Customization** tab.
3. In the **Properties** drop-down list, select ranges.
4. You can customize the alarm ranges for this parameter on this instance. If you want to apply the customization to all instances, select the **Override All Instances** checkbox.

**Note:** The `IONANumInvocations` parameter is a raw, non-normalized metric and can be subject to sampling errors. To minimize this, keep the performance logging period relatively short, compared to the poll time for the parameter collector.

## Monitoring operations

In the same way that you can monitor the overall performance of your servers and clients, you can also monitor the performance of individual operations. In Orbix, an operation equates to an operation on an IDL interface. In Artix, an operation relates to a WSDL operation defined on a port.

In many cases, the most important metrics relate to the execution of particular operations. For example, it could be that the `make_reservation()`, `query_reservation()` calls are the operations that you are particularly interested in measuring. This means updating your `servers.conf` file as follows:

```
mydomain_myserver, 1, /var/mydomain/logs/myserver_perf.log, [make_reservation, query_reservation]
```

In this example, the addition of the bold text enables the `make_reservation` and `query_reservation` operations to be tracked by BMC Patrol.

**Operation parameters**

[Table 2](#) shows the IONA parameters that are tracked for each operation instance:

**Table 2:** *IONA Operation Provider Parameters*

Parameter Name	Default Warning	Default Alarm	Description
IONAAvgResponseTime	1000–5000	> 5000	The average response time (in milliseconds) for this operation on this server during the last collection cycle.
IONAMaxResponseTime	1000–5000	> 5000	The slowest invocation of this operation (in milliseconds) during the last collection cycle.
IONAMinResponseTime	1000–5000	> 5000	The quickest invocation (in milliseconds) during the last collection cycle.
IONANumInvocations	10000–100000	> 100000	The number of invocations of this operation received during the last collection period.
IONAOpsPerHour	1000000–100000000	> 10000000	The number of operations invoked in a one hour period based on the rate calculated from the last collection cycle.



Figure 9 shows BMC Patrol graphing the value of the `IONAAvgResponseTime` parameter on a `query_reservation` operation call.

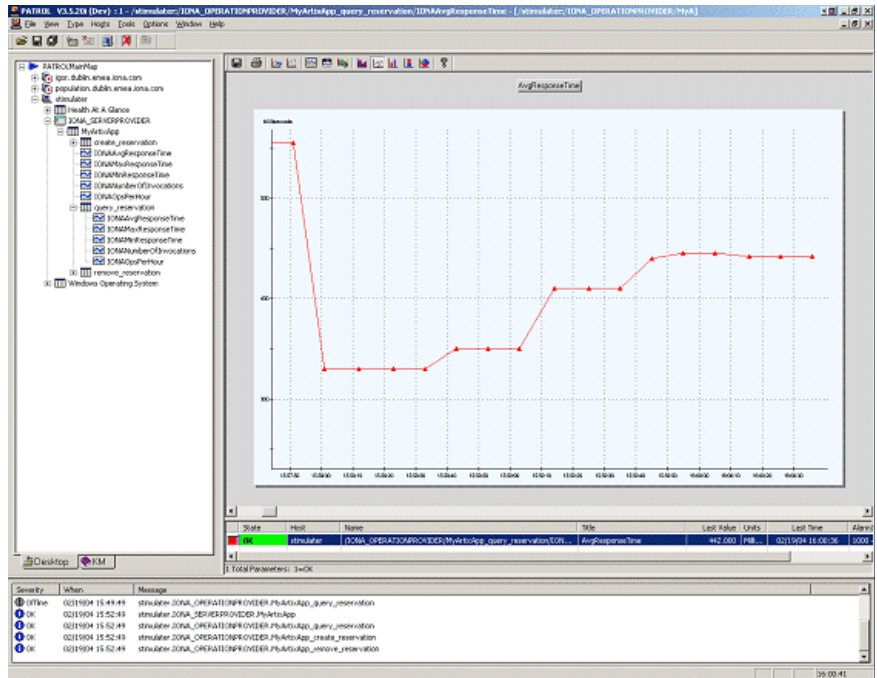


Figure 9: Graphing for `IONAAvgResponseTime`



---

**Starting, stopping and restarting servers**

The **Orbix Configuration** and **Artix Designer** GUIs will generate a `server_commands.txt` for the services that you are deploying on your host. To execute commands in this file, perform the following steps:

1. Right click on an instance in the BMC Patrol Console **Main Map**.
2. Select **Knowledge Module Commands|IONA|Commands**.
3. Select one of the following commands:

**Start** Starts a server

**Stop** Stops a server.

**Restart** Executes a stop followed by a start.

---

**Troubleshooting**

If you have difficulty getting the IONA BMC Patrol integration working, you can use the menu commands to cause debug output to be sent to the system output window.

To view the system output window for a particular host, right click on the icon for your selected host in the BMC Patrol **Main Map**, and choose **System Output Window**.

You can change the level of diagnostics for a particular instance by right clicking on that instance and choosing:

**Knowledge Module Commands|IONA|Log Levels**

You can choose from the following levels:

- **Set to Error**
- **Set to Info**
- **Set to Debug**

**Set to Debug** provides the highest level of feedback and **Set to Error** provides the lowest.



# Glossary

---

A

## **administration**

All aspects of installing, configuring, deploying, monitoring, and managing a system.

---

C

## **CFR**

See [configuration repository](#).

## **client**

An application (process) that typically runs on a desktop and requests services from other applications that often run on different machines (known as server processes). In CORBA, a client is a program that requests services from CORBA objects.

## **configuration**

A specific arrangement of system elements and settings.

## **configuration domain**

Contains all the configuration information that Artix and Orbix applications use. Defines a set of common configuration settings that specify available services and control their behavior. This information consists of configuration variables and their values. Configuration domain data can be implemented and maintained in a centralized Orbix configuration repository, or as a set of files distributed among domain hosts. Configuration domains let you organize configuration into manageable groups, thereby bringing scalability and ease of use to the largest environments. See also [configuration file](#) and [configuration repository](#).

## **configuration file**

A file that contains configuration information for Orbix or Artix components within a specific configuration domain. See also [configuration domain](#).

## **configuration repository**

A centralized store of configuration information for all Orbix components within a specific configuration domain. See also [configuration domain](#). This component occurs in Orbix only, and is not present in Artix.

**configuration scope**

Orbix and Artix configuration is divided into scopes. These are typically organized into a root scope and a hierarchy of nested scopes, the fully-qualified names of which map directly to ORB names. By organizing configuration properties into various scopes, different settings can be provided for individual ORBs, or common settings for groups of ORB. Orbix and Artix services, such as the naming service, have their own configuration scopes.

**CORBA**

Common Object Request Broker Architecture. An open standard that enables objects to communicate with one another regardless of what programming language they are written in, or what operating system they run on. The CORBA specification is produced and maintained by the OMG. See also [OMG](#).

---

**D****deployment**

The process of distributing a configuration or system element into an environment.

---

**E****Enterprise Management System**

An Enterprise Management System (EMS) is a set of integrated tools that enable system administrators to manage large-scale production environments. The main Enterprise Management Systems are BMC Patrol™, IBM Tivoli™, HP OpenView™, and CA Unicenter™. These systems give a top-to-bottom view of every part of the IT infrastructure, and enable you to track key server metrics and automate recovery actions if a server crashes.

---

**H****HTTP**

HyperText Transfer Protocol. The underlying protocol used by the World Wide Web. It defines how files (text, graphic images, video, and other multimedia files) are formatted and transmitted. Also defines what actions Web servers and browsers should take in response to various commands. HTTP runs on top of TCP/IP.

---

**I****IDL**

Interface Definition Language. The CORBA standard declarative language that allows a programmer to define interfaces to CORBA objects. An IDL file defines the public API that CORBA objects expose in a server application. Clients use these interfaces to access server objects across a network. IDL interfaces are independent of operating systems and programming languages.

**IIOP**

Internet Inter-ORB Protocol. The CORBA standard messaging protocol, defined by the OMG, for communications between ORBs and distributed applications. IIOP is defined as a protocol layer above the transport layer, TCP/IP.

**installation**

The placement of software on a computer. Installation does not include configuration unless a default configuration is supplied.

**Interface Definition Language**

See [IDL](#).

**invocation**

A request issued on an already active software component.

---

**K****Knowledge Module**

A Knowledge Module (KM) is a pre-built loadable library that enables connection to the BMC Patrol environment. The IONA Knowledge Module enables connection for Orbix and Artix products. The IONA KM conforms to standard BMC Software Knowledge Module design and operation.

---

**O****OMG**

Object Management Group. An open membership, not-for-profit consortium that produces and maintains computer industry specifications for interoperable enterprise applications, including CORBA. See [www.omg.com](http://www.omg.com).

**ORB**

Object Request Broker. Manages the interaction between clients and servers, using the Internet Inter-ORB Protocol (IIOP). Enables clients to make requests and receive replies from servers in a distributed computer environment. Key component in CORBA.

---

**P**

**protocol**

Format for the layout of messages sent over a network.

---

**S**

**server**

A program that provides services to clients. CORBA servers act as containers for CORBA objects, allowing clients to access those objects using IDL interfaces.



# Index

## A

alarms 3, 5, 26  
Artix Designer 10

## B

Bundle Details 10

## C

collector 23  
commands 27  
Customization tab 23

## D

deployment  
    bundle 10  
    profile 10  
    wizard 10  
diagnostics 27  
Domain Settings 15

## E

EMS 2  
Enable Management checkbox 10  
Enterprise Management System 2

## G

Generate Code dialog 11  
Generate EMS Configuration Files 15

## I

IDL, interface 23  
IONAAvgResponseTime 22, 24, 25, 26  
IONA\_km.tgz 20  
IONA\_km.zip 20  
IONAMaxResponseTime 22, 24  
IONAMinResponseTime 22, 24  
IONANumInvocations 22, 23, 24  
IONA\_OPERATIONPROVIDER 6, 21  
IONAOpsPerHour 22, 24  
IONA\_SERVER.kml 21  
IONA\_SERVERPROVIDER 6, 21, 22

itconfigure tool 15

## J

Java  
    requirements 20

## K

Knowledge Modules 8

## L

Launch Service on Domain Startup 16  
log file interpreter 5  
logging period 23  
Log Levels 27

## M

Main Map 21, 27  
menu commands 5, 27

## O

operation  
    parameters 24  
    WSDL 23  
Orbix Configuration tool 15  
Other Properties 16  
Override All Instances checkbox 23

## P

parameter collector 23  
parameters 22, 24  
performance logging  
    configuration 16  
    period 23  
    plugins 5  
port, WSDL 23  
Properties menu 23

## R

response times 3  
Restart 27

## INDEX

### S

- server\_commands.txt 12, 17
- server parameters 22
- servers.conf 12, 17
- Service Launching 16
- Set to Debug 27
- Set to Error 27
- Set to Info 27
- Start 27
- Stop 27
- System Output Window 27

### T

- troubleshooting 27

### U

- UNIX 20

### W

- warnings 26
- Windows 20
- WSDL
  - operation 23
  - port 23



