

DevPartnerStudio Quick Reference

Print out all or portions of this document and keep it handy for quick reference (use a color printer when available).

DevPartner Features

Use the links in the left column in the following table to locate reference information about DevPartner features.

To solve this problem	Use this DevPartner feature
Detect programming problems and naming inconsistencies	Code Review
Diagnose run-time errors in the source code	Error Detection
Locate performance bottlenecks in the application	Coverage, Memory, and Performance Analysis
Ensure code base stability throughout development and testing phases	Coverage Analysis Session Data
Determine memory allocation in an application and get feedback to reduce memory consumption	Memory Analysis

More Information

Refer to the DevPartner online help or to the *Understanding DevPartner* manual for more information.











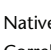
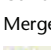


Common Elements

The DevPartner software provides these common elements, regardless of feature.

- DevPartner Toolbar
- DevPartner Menu
- DevPartner File Extensions
- Command Line Instrumentation Options

DevPartner Menu and Toolbar

Accessed from the DevPartner menu or toolbar in Visual Studio.

Choose this menu or toolbar item	To
 Error detection	Perform run-time error detection using BoundsChecker technology
 Coverage Analysis	Perform run-time code coverage analysis
 Error detection and Coverage Analysis	Perform run-time error detection with code coverage analysis
 Performance Analysis	Execute run-time performance analysis
 Memory Analysis	Execute run-time memory analysis
 Performance Expert	Execute run-time analysis with Performance Expert
 Perform Code Review	Perform static code analysis
 Manage Code Review Rules	Access code review rules management
 Error Detection Rules	Access error detection rules management, used to filter or suppress detected errors
 Native C/C++ Instrumentation	Perform compile-time instrumentation for: Error detection, Error detection with coverage, Performance or coverage analysis
 Native C/C++ Instrumentation Manager	Access the Instrumentation Manager
 Correlate	Correlate performance or coverage files
 Merge Coverage Files	Merge coverage analysis sessions
 Options	Access DevPartner options Choices include: Analysis, Code review, Error Detection

DevPartner File Extensions

File extensions for session files.

Run this DevPartner feature	To create this session file (extension)
Code review	.dpmdb
Code coverage	.dpcov
Code coverage merge files	.dpmrg
Error detection	.dpbcl
Memory analysis	.dpmem
Performance analysis	.dpprf
Performance Expert	.dppxp

Command Line Instrumentation Options

NMCL Options

The following table lists the NMCL options that you can use to instrument your unmanaged (native) C++ code from the command line. Use NMCL.EXE only to compile unmanaged C++ code with DevPartner performance and coverage or error detection instrumentation. NMCL is not used with managed code, which DevPartner instruments as it is passed to the common language runtime during execution.

Note All NMCL options must begin with a forward slash (shown in the following list) or hyphen, followed by the letters NM. For example: /NMoption or -NMoption.

Use...	To...
/NMbcpath:bc-path	Specify the directory location of bcinterf.lib if you do not have the directory that contains NMCL on your path.
/NMclpath:cl-path	Specify the directory location of cl.exe. You can use this option to bypass the installed location of DEVENV, or if DEVENV is not installed.
/NMhelp or /?	Display help text
/NMignore:source-file or /NMignore:source-file:method source-file	Specify a source file or a method in a source file that should not be instrumented

Use...	To...
/NMlog:log-file	Specify a log file for NMCL messages (default: stdout)
/NMnogm	Ignore the CL /Gm (minimal rebuild) option if it appears on the command line. You can use this option to avoid a known conflict between the NMAKE /A and CL /Gm options.
/NMonly:source-file	Specify a single source file that should be instrumented
/NMopt:option-file or /NM@option-file	Specify an option file (an ASCII file containing individual command-line options, each on a separate line.
/NMpass	Specify pass-through mode, which instructs NMCL to call CL without intervention. In this case, no instrumentation takes place.
/NMstoponerror	Stop NMCL if an error occurs during instrumentation. If this option is not specified, the default behavior is to fall back to a standard CL compile.
/NMbcOn	Use DevPartner Error Detection instrumentation. This is the default setting.
/NMtxOn	Specifies instrumentation for performance and coverage analysis.
/NMtxInlines	Instruments methods that are marked as inlineable if inline optimizations are enabled (using the /O1, /O2, /Ob1, or /Ob2 option)
/NMtxNoLines	Instruct DevPartner not to collect line information. When you use this option, DevPartner does not display any line data in the Source tab. You can also use this to improve the time required to instrument and run your application.
/NMtxpath:tx-path	Specify the directory location of the performance and coverage analysis library files if you do not have the directory that contains NMCL on your path.

When using NMCL, add the directory containing these utilities to your path. For example, if you installed the product into the default directory, add the following directory to your path:

C:\Program Files\Common Files\Micro Focus\NMShared

Note: For installs on 64-bit versions of Windows, add the following directory to your path:

C:\Program Files (x86)\Common Files\Micro Focus\NMShared

NMLINK Options

The following table lists the NMLINK options that you can use to link your unmanaged (native code) C++ application to DevPartner.

Note: All NMLINK options must begin with a forward slash (shown in the following list) or hyphen, followed by the letters NM. For example: /NMoption or -NMoption.

Use...	To...
/NMbcOn	Use DevPartner Error Detection instrumentation. This is the default setting.
/NMbcpath:bc-path	Specify the directory location of bcinterf.lib if you do not have the directory that contains NMCL on your path.
/NMhelp or /?	Display help text
/NMlinkpath:link-path	Specify the directory location of LINK.EXE. You can use this option to bypass the installed location of DEVENV, or if DEVENV is not installed.

Use...	To...
/NMpass	Specify pass-through mode, which instructs NMLINK to call LINK without intervention.
/NMtxOn	Specifies instrumentation for coverage and performance analysis.
/NMtxpath:tx-path	Specify the directory location of the performance and coverage analysis library files if you do not have the directory that contains NMCL on your path.

When using NMCL and NMLINK, add the directory containing these utilities to your path. For example, if you installed the product into the default directory, add the following directory to your path:

C:\Program Files\Common Files\Micro Focus\NMShared

Note: For installs on 64-bit versions of Windows, add the following directory to your path:

C:\Program Files (x86)\Common Files\Micro Focus\NMShared



Code Review

Command Shortcuts for Rule Manager

Use the following keyboard shortcuts to enter Rule Manager commands:

Command	Action
Ctrl+A	Rule > Select All Rules
Ctrl+C	Rule > Copy Selected Rules
Ctrl+N	Rule > New Rule
Ctrl+O	File > Open Rule Set
Ctrl+P	File > Print
Ctrl+V	Rule > Paste Rules
F5	View > Refresh

Command-line Switches Used in CRBatch

CRBatch.exe /<switch>

Switch	Function
/f configuration file/file name	Informs CRBatch what configuration file to use when reviewing a solution or project This switch is mandatory.
/v or /verbose	Instructs CRBatch to report errors in a message box, and to set the exit code used by batch procedures Although this switch is optional, it is useful if you want to physically debug configuration files.
/vs "10.0", /vs "9.0" or /vs "8.0"	Indicates the Visual Studio environment where the batch review will be executed; choices include 10.0 (Visual Studio 2010), 9.0 (Visual Studio 2008) or 8.0 (Visual Studio 2005). It is recommended that you use this switch, most importantly if you have more than one version of Visual Studio on your system. If you do not include this switch, DevPartner will default to the latest version.

Command-line Switches Used in CRExport

CRExport.exe /<switch>

Switch	Function
/?	Help — Displays this list of the available command line interface arguments.
/f sessionfile	Fully-qualified session file path and name — Identifies the session database to use for this export. (Mandatory)
/e xml exportfile	Fully-qualified export file path and name — Identifies the XML file to receive the exported data. (Mandatory)
/a	Export all session data — Exports all data for the specified session, including the outbound methods for call graph data. Inbound methods are not exported.
/a i	Export all session data with inbound methods — Exports all data for the specified session, including inbound and outbound methods for call graph data.
/p	Export problems data — Exports the problems data for the specified session.
/m	Export metrics data — Exports the metrics data for the specified session.
/n	Export naming analysis data — Exports the naming analysis data for the specified session.
/s	Export code size data — Exports the code size data for the specified session.
/c	Export call graph data — Exports the outbound, or called, methods in the call graph data for the specified session.
/c i	Export call graph data with inbound methods — Exports the call graph data, including inbound and outbound methods, for the specified session.

Code Review Default Options (General Node)

Category	Settings
Projects to be reviewed	All projects selected (C# and VB.NET projects only)
Rule set	All Rules
Naming analysis to use	Naming Guidelines (see below)
Collect metrics	On
Collect call graph data	On
Always generate a batch file	On
Always save review results	On
Prompt for session file name	Off

Naming Guidelines

Description	Default
What to analyze	All public or protected identifiers
Choose dictionary	American English

Description	Default
Include naming analysis for	All identifiers selected
Company name	
Technology name	

Code Review Toolbars

The first toolbar contains the following icons and functions:

- Print <current code review results>
- Hide/Show Solution Tree
- Hide/Show Description
- Mark Item Fixed
- Filter Current View
- Suppress Rule

The second toolbar contains the following icons and functions:

- Layout
- Scaling
- Node style
- Number of levels
- Perform a review of the solution code
- Create and modify rules used during code reviews



Code Review Summaries

Summary of Problems *						
Type	Problems		Severity			
Names	Total	Fixed	High	Medium	Low	Warning
COM Interop	1	0	0	0	0	1
Database	0	0	0	0	0	0
Date	0	0	0	0	0	0
Design Time Properties	0	0	0	0	0	0
Error/Exception Handling	21	0	0	1	20	0
Garbage Collection	0	0	0	0	0	0
Internationalization	12	0	12	0	0	0
Language	0	0	0	0	0	0
Logic	2	0	0	0	0	2
Maintainability	13	0	0	2	3	8
Performance	1	0	1	0	0	0
Portability	0	0	0	0	0	0
Project & Solution Properties	0	0	0	0	0	0
Reliability	0	0	0	0	0	0
Security	3	0	3	0	0	0
Standards	0	0	0	0	0	0
System	0	0	0	0	0	0
Usability	0	0	0	0	0	0
User-Defined Rule	0	0	0	0	0	0
Versioning	0	0	0	0	0	0
Windows API	0	0	0	0	0	0
Totals	53	0	16	3	23	11

* Summaries include all rule violations. Your filter settings do not apply.

Summary of Counts	
Summary Type	Count
Review Time (in minutes)	1,212
Total Lines (including blank lines)	2,183
Code Only Lines	1,162
Comment Only Lines	270
Code with Comments	0
Rule Comparisons Made	468,267
Total Lines Checked	2,183

Review Settings	
Review Settings	Setting Value
Solution	SpeedBump.Net
Solution Path	C:\p4_MHT-NMSource1666_MHT101515D01\DP5\DP_Mainline\Analysis\Examples\SpeedBump.Net\SpeedBump.Net.sln
Session File	C:\p4_MHT-NMSource1666_MHT101515D01\DP5\DP_Mainline\Analysis\Examples\SpeedBump.Net\SpeedBump.Net.DPMD8
Batch Command Execution File	C:\p4_MHT-NMSource1666_MHT101515D01\DP5\DP_Mainline\Analysis\Examples\SpeedBump.Net\SpeedBump.Net.BAT

Project List			
Project Name	Compile Errors	Reviewed	Project Path
Driver2008	False	True	C:\p4_MHT-NMSource1666_MHT101515D01\DP5\DP_Mainline\Analysis\Examples\SpeedBump.Net\Driver\Driver2008.csproj
CSharp2008	False	True	C:\p4_MHT-NMSource1666_MHT101515D01\DP5\DP_Mainline\Analysis\Examples\SpeedBump.Net\CSharp\CSharp2008.csproj
VB2008	False	True	C:\p4_MHT-NMSource1666_MHT101515D01\DP5\DP_Mainline\Analysis\Examples\SpeedBump.Net\VB\VB2008.vbproj

Metrics Analysis	True
Naming Analysis	Naming Guidelines
Dictionary Name	American English

Summary of Call Graph Data	
Summary Type	Count
Total Methods Graphed	24
Total Methods Uncalled	0
Technology Name	Not supported
Call Graph Analysis	True
Ignore compile errors	False
Exclude rules that require a build	False
Always generate a batch file	True



Code Review Results Panes

Problems pane — displays rule-based programming problems

Naming pane — lists .NET naming violations and offers suggestions

Metrics pane — provides code complexity statistics

The screenshot displays four panes from the Visual Studio Code Review tool:

- Problems pane:** A table listing rule-based programming problems. The first row shows a 'Structured error handler not found' error at line 1050 in SpeedBump.cs.
- Naming pane:** A table listing .NET naming violations. It shows variables like 'i' and 'r' with suggestions and access levels.
- Metrics pane:** A table providing code complexity statistics. It lists methods like 'QSort' and 'BubbleSortBtn_Click' with metrics for complexity, bad fix percentage, understanding, and lines of code.
- Call Graph pane:** A graphical method call tree showing the flow of execution between various methods in the application.

Structured error handler not found

Trigger: Detected no structured exception handling at this level [Occurrences:1]

Original Source Line: private void UpdateSlot(int32 iSlot)

Location: SpeedBump.cs

Explanation

A structured error handler was not found in this Visual Basic .NET procedure. Add a try catch block to this code for more fine-grained error handling.

Repair

Add a structured error handler to trap and manage error conditions.

Visual C# .NET example:

```
public void foo()  
{  
    try  
    {  
        // Do something  
    }  
}
```

Call Graph pane — graphically shows method call tree

Coverage, Memory, and Performance Analysis

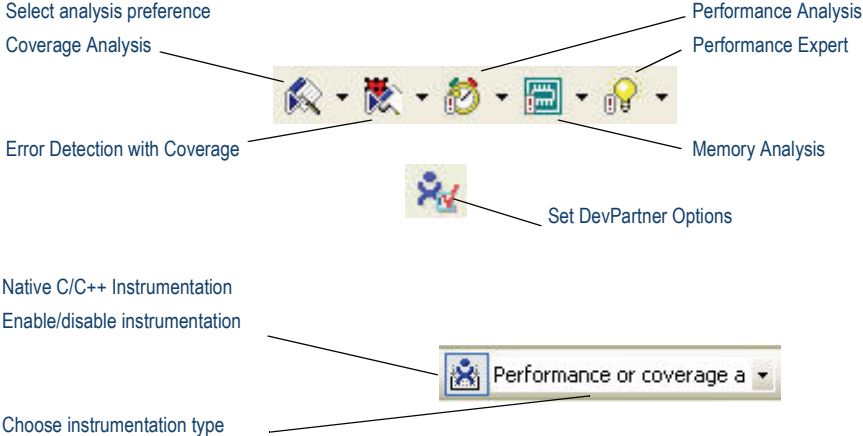
Determine application test coverage, analyze an application’s use of memory, and profile application performance.

General and Data Collection Properties

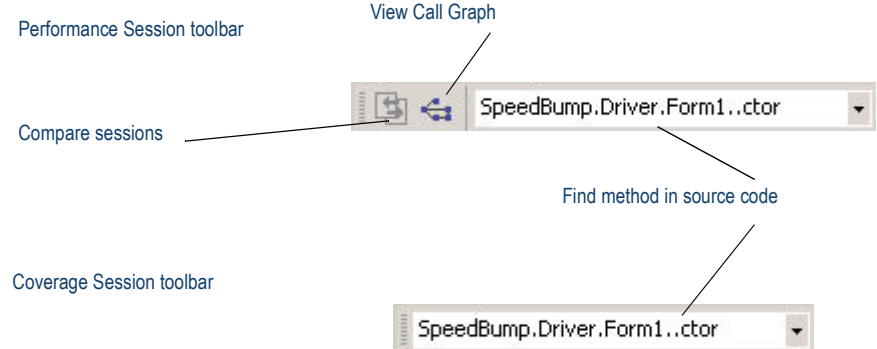
The following data collection properties apply to performance, coverage, and memory analysis.

Property	Default setting
Automatically Merge Session Files	Ask me if I would like to merge it
Collect information about .NET assemblies	True
Collect COM Information	True
Exclude Others	True
Instrument inline functions	True
Instrumentation Level	Line
Track System Objects	True

DevPartner toolbar buttons for Coverage, Memory, and Performance



Performance and Coverage Analysis Session Toolbars



Coverage Analysis

Coverage Analysis Session Data

Results Summaries

DevPartner displays results for coverage analysis in Visual Studio or in the Coverage Analysis Viewer. Session files present data in tabbed format, including the following tabs:

- Method List
- Source Code
- Merge History
- Session or Merge Summary

Filter the data view

View coverage metrics for methods

Merge coverage sessions and record merge history

View statistics for sessions or merge file

View execution data for lines of source code

The screenshot displays the DevPartner Coverage Analysis interface with several components:

- Method List:** A table showing method coverage metrics.

Method Name	% Covered	# Lines
SpeedBump.CSharp.Form1.ClearTiming(void)	0.0	62 of 65 lines executed (95.4%)
SpeedBump.Driver.Form1.NativeCppBtn_Click(Object, EventArgs)	0.0	6 of 7 methods called (85.7%)
SpeedBump.CSharp.Form1.Dispose(Boolean)	60.0	
SpeedBump.Driver.Form1.Dispose(Boolean)	80.0	
SpeedBump.CSharp.Form1.QSort(Int32, Int32)	94.7	
SpeedBump.CSharp.Form1.Form1_ctor(void)	100.0	
SpeedBump.CSharp.Form1.InitializeComponent(void)	100.0	
SpeedBump.CSharp.Form1.Form1_Load(Object, EventArgs)	100.0	
SpeedBump.CSharp.Form1.DoRandomize(void)	100.0	
SpeedBump.CSharp.Form1.InitializeSlot(Int32)	100.0	
- Source Code:** A view of the source code for `Form1.cs`, with a blue bar indicating the percentage of lines covered (96.4%).
- Bar Chart:** A chart comparing coverage across different sessions: `driver3.dpcov`, `driver1.dpcov`, `driver2.dpcov`, and `driversnap`. The chart shows both % Lines Covered (blue bars) and % Methods Covered (green bars).
- Summary Summary:** A summary window showing session details:

Property	Value
Started:	2/28/2009 5:32:17 PM
Ended:	2/28/2009 5:33:17 PM
Executable:	C:\SpeedBump.Net\Driver\bin\Release\Driver.exe
Command Args:	
Exit Code:	0
Processor Speed:	2992 Mhz
# of Processors:	1
OS Version:	Microsoft Windows XP
- Merge History:** A list of merged sessions:

Session Name	Date/Time	User
Driver3.dpcov	2/28/2008 5:40:50 PM	Administrator
Driver1.dpcov	2/28/2008 5:40:50 PM	Administrator
Driver2.dpcov	2/28/2008 5:40:50 PM	Administrator
DriverSnap1.dpcov	2/28/2008 5:42:00 PM	Administrator

Memory Analysis

Session Control for memory analysis

Memory Leaks session controls

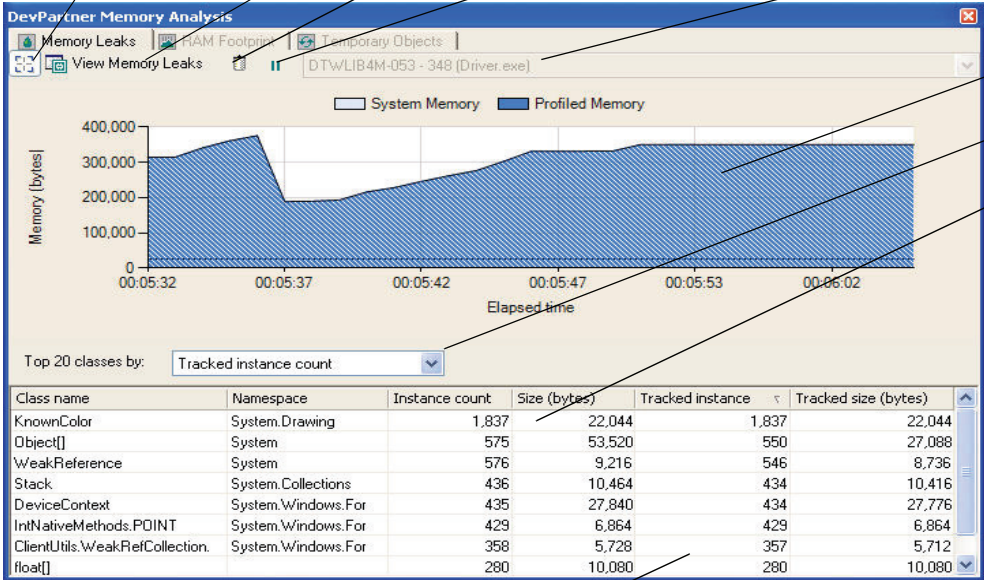
Start and Stop Tracking potential memory leaks

Take a memory leaks snapshot

Force a garbage collection

Pause real-time graph (data collection continues)

Choose process to profile



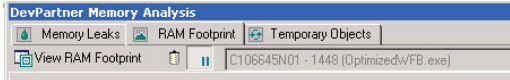
Graph shows state of managed heap in real time

Dynamically change the class list sort order

Class list dynamically updates to show what is in memory

Session controls tailored to type of memory data collection

RAM Footprint session controls:



Temporary Objects session controls:



In leak analysis, monitor **Tracked instance count** for objects that were not collected as expected

Clear temporary object allocations tracked to this point

Memory Analysis Session Data

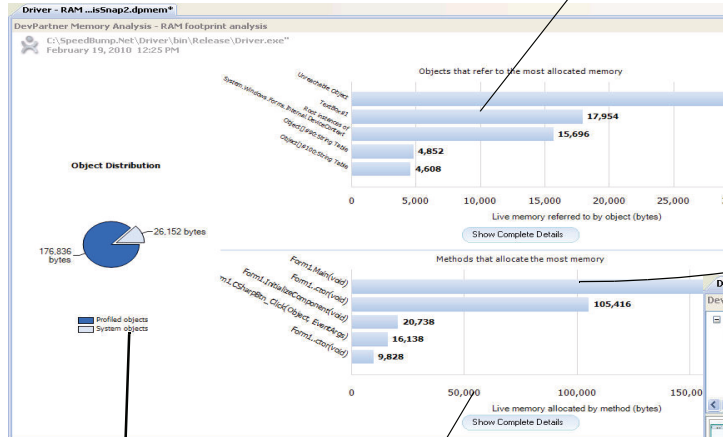
Results tailored to type data collection

- RAM Footprint
- Memory Leaks
- Temporary Objects
- Click Show Complete Details to view session data

Analyze object allocations in depth

Summary of most memory-intensive object allocations

Drill down sequentially from any object in the list to examine referenced objects

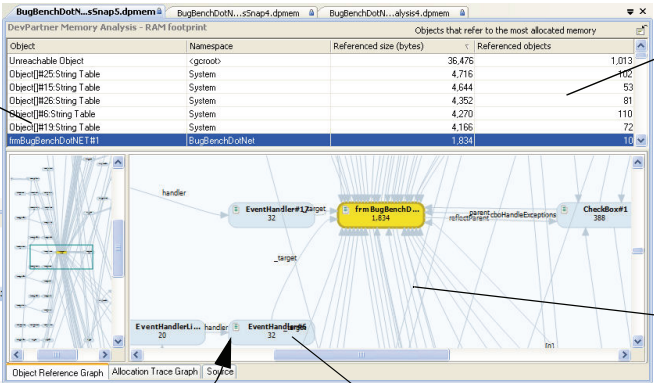


Summary of most memory-intensive methods

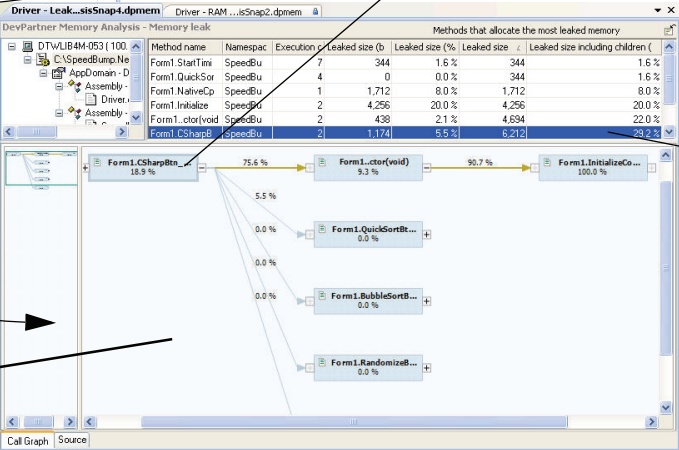
Object distribution: user vs. system objects (RAM footprint only)

Call Graph

Analyze the calling sequence of methods that allocated memory. Answers the question: Who allocated all that memory?



Jump to the allocating source line from any method or object to edit source code



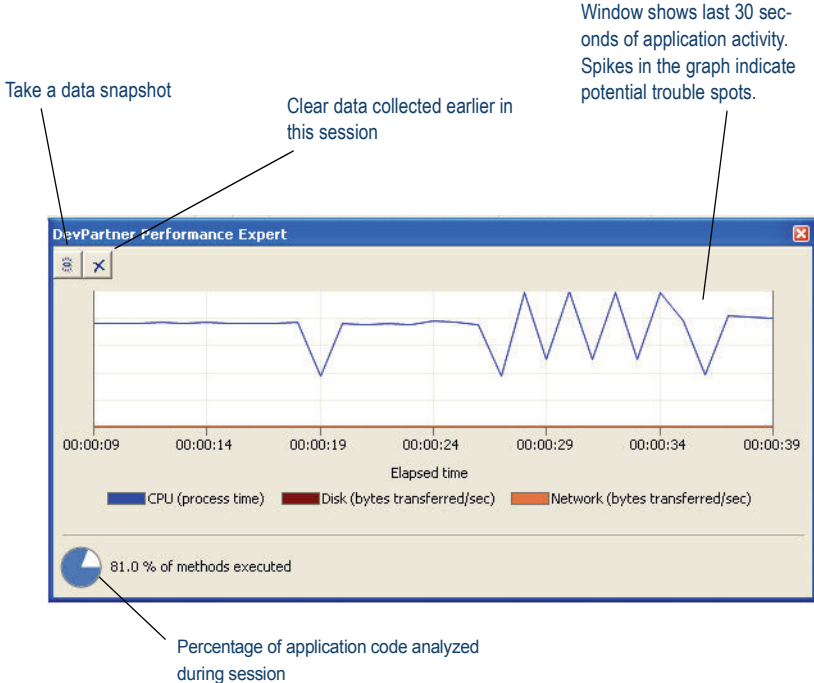
Performance Expert

Results Summaries

DevPartner displays results for Performance Expert in session files. Session files present data in tabbed format, including the following tabs:

- Call Graph
- Call Tree
- Methods table
- Source code
- Call stacks

Performance Expert Session Controls



Performance Expert Session Data

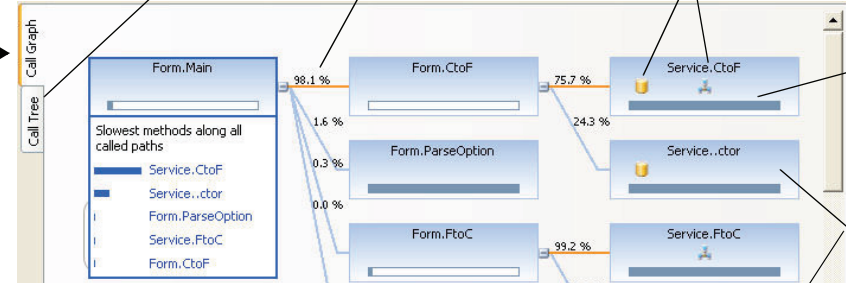
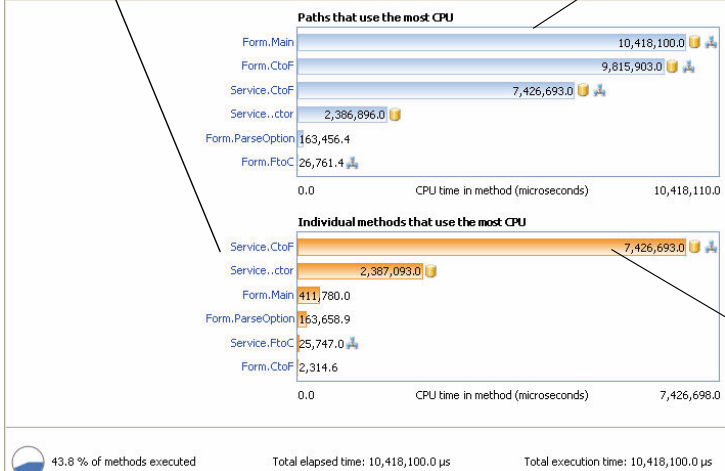
Click individual method for Methods analysis (without children)

Click entry point method for Path analysis (with children)

Call Tree tab shows impact of disk, network I/O, and wait time

Call Graph tab highlights critical path and expensive child methods

Icons indicate type of activity in method: disk, network, or lock wait time



Bars show time in method vs. time in child methods

Select a method to update source and call stack tabs

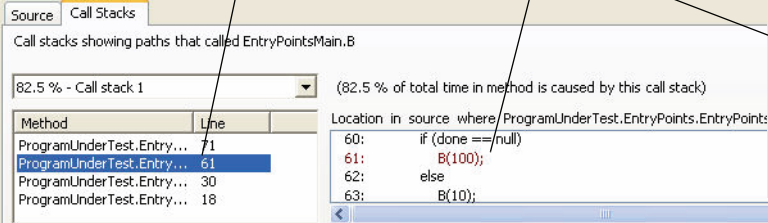
Method	CPU time without...	Execution count	Disk activity (bytes transfe...	Wait time (µs)	Disk read count
Service.CtoF	7,426,693.0	2	845,148	4,847.2	132
Service..ctor	2,387,093.0	4	657,872	7,423.0	102
Form.Main	411,780.0	1	0	0.0	0
Form.ParseOption	163,658.9	4	0	0.0	0
Service.FtoC	25,747.0	2	0	999.2	0
Form.CtoF	2,314.6	2	0	0.0	0

Methods table shows impact of disk, network I/O, and wait time

Choose metric

Select method in stack to locate

Double-click a line in a source display to edit in



```

Source Call Stacks
CPU time without user children (µs) For each line in Service.CtoF
7,426,672.0 0.0
52: }
53:
54:
55: // <remarks>
56: [System.Web.Services.Protocols.SoapDocumentMethodAttribute("http://tempuri.org/CtoF")]
57: public System.Double CtoF(System.Double c) {
58:     object[] results = this.Invoke("CtoF", new object[] {
59:         c});
60: }
  
```

Source tab shows most expensive line for selected metric

Using DPAnalysis.exe

Use DPAnalysis.exe to run coverage analysis, memory analysis, performance analysis, or Performance Expert sessions from the command line. DPAnalysis.exe accepts command line switches or an XML configuration file.

Command Line Operations

Use this syntax to run coverage, memory, performance, or Performance Expert sessions from the command line:

```
DPAnalysis.exe [a] {b} {c} {d} [e] target {target args}
```

DPAnalysis.exe requires Analysis Type and Target Type switches. Other switches are optional.

The following table lists the switches used with DPAnalysis.exe:

Category	Switches
[a] Analysis Type	/Cov[erage] - Sets analysis type to DevPartner coverage analysis /Mem[ory] - Sets analysis type to DevPartner memory analysis /Perf[ormance] - Sets analysis type to DevPartner performance analysis /Exp[ert] - Sets analysis type to DevPartner Performance Expert
[b] Data Collection	/E[nable] - Enables data collection for the specified process or service /D[isable] - Disables data collection for the specified process or service /R[eppeat] - Profiling will occur any time you run the specified process until you use the /D switch to disable profiling.

Category	Switches
{c} Other Options	/O[utput] - Specify the session file output directory and/or filename /W[orkingDir] - Specify working directory for the process or service /H[ost] - Specify the target's host machine /NOWAIT - Do not wait for the process to exit, just wait for it to start /NO_UI_MSG - Set this switch to true to suppress UI error messages. The default is false . /N[ewconsole] - Run the process in its own command window /F[orce] - Forces profiling for coverage or performance of applications written without managed code or CTI.
{d} Analysis Options	/NO_QUANTUM - Disables excluding time spent on other threads /NM_METHOD_GRANULARITY - Sets data collection granularity to method-level (line-level is default) /EXCLUDE_SYSTEM_DLLS - Excludes data collection for system dlls (performance analysis only) /NM_ALLOW_INLINING - Enable run-time instrumentation of inline methods (coverage and performance analysis only) /NO_OLEHOOKS - Disable collection of COM /NM_TRACK_SYSTEM_OBJECTS - Track system object allocation (memory analysis only)
[e] Target Type	Identifies target that follows as either a process or service. Pick only one. All statements that follow the target name/path are considered arguments to the target /P[rocess] - Specify a target process (followed by arguments to process) /S[ervice] - Specify a target service (followed by arguments to service) /C[onfig] - Path to configuration file

Configuration File

Use this syntax to run coverage, memory, performance, or Performance Expert sessions through a configuration file:

```
DPAnalysis.exe /config c:\temp\config.xml
```

The following table briefly describes the XML elements. See the DevPartner online help or the Understanding DevPartner manual for more information.

Element	Description
AnalysisOptions	(Optional) For each Process or Service, zero or one. Defines runtime attributes for the specified target process or service. Attributes correspond to DevPartner properties accessible from the Properties Window in Visual Studio. <i>Attributes:</i> SESSION_DIR, SESSION_FILENAME, NM_METHOD_GRANULARITY, EXCLUDE_SYSTEM_DLLS, NM_ALLOW_INLINING, NO_OLEHOOKS, NM_TRACK_SYSTEM_OBJECTS, NO_QUANTUM
Arguments	(Optional) For each Process or Service, zero or one. Defines runtime attributes for the specified target process or service. Attributes correspond to DevPartner Coverage, Memory and Performance Analysis properties accessible from the Properties Window in Visual Studio. <i>Attributes:</i> SESSION_DIR, SESSION_FILENAME, NM_METHOD_GRANULARITY, EXCLUDE_SYSTEM_DLLS, NM_ALLOW_INLINING, NO_OLEHOOKS, NM_TRACK_SYSTEM_OBJECTS, NO_QUANTUM
Excludelimages	(Optional) For each Process or Service, zero or one. No default if omitted. Defines images (at least one, no maximum) which, if loaded by the target process or service, will not be profiled. No attributes.

Element	Description
Host	(Optional) For each Process or Service, zero or one. No default if omitted. Sets the host machine of the target process or service. No attributes.
Name	One required for each service. Provides the name of the service as registered with the service control manager. This is the same name you would use for the system's NET START command. No attributes.
Path	One required for each process. Specify a fully qualified or relative path to the executable. You can specify the executable name without the path if the executable exists in the current directory. No attributes.
Process	The configuration file must contain at least one Process or one Service element. Specifies a target executable. <i>Attributes:</i> CollectData, Spawn, NoWaitForCompletion, NewConsole
RuntimeAnalysis	Required; one only. Defines the type of analysis and maximum session time.
Service	The configuration file must contain at least one Process or one Service element. Specifies a target service. <i>Attributes:</i> CollectData, Start, RestartIfRunning, RestartAtEndOfRun
Targets	Required. One only. Begins a block of one or more Process or Service entries. Target processes and services are started in the order they are listed in the configuration file. <i>Attributes:</i> RunInParallel



Error Detection

File Extensions Used by Error Detection

Extension	File Type	Description
.dpbcl	Error Detection Session File	This is the Error Detection log for the user's program execution.
.dpbcc .dpbcd	Error Detection Settings File	This file contains the various settings for Error Detection. The .dpbcd extension refers to the default settings file created, while .dpbcc refers to a custom settings file that has been saved separately.
.dpsup	Error Detection Suppressions File	This file contains the various suppressions for the user's program.
.dpflt	Error Detection Filters File	This file contains the various filters for the user's program.
.dprul	Error Detection Rules File	This is a database of the user's suppressions and filters.

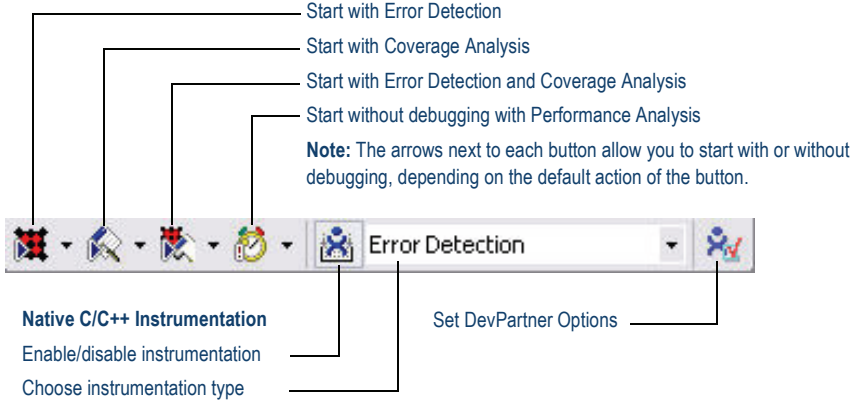
Default Options (DevPartner Studio Professional and Enterprise Editions) or Settings (Visual C++ BoundsChecker Suite)

Category	Settings
General	On Log events
	On Display error and pause
	Off Prompt to save program results
	Off Show memory and resource viewer when application exits
	On Source file search path - based on the location of the .EXE (standalone), .DSW (C++), or .SLN (Visual Studio).
	- Override symbol path - <i>Default: empty</i>
	- Working directory (standalone only) based on the location of the .EXE
	- Command line arguments (standalone only) - <i>Default: empty</i>
	On Call parameter coding depth = 1
	Off Use raw stack capture method
Data Collection	On Maximum call stack depth on allocation = 5
	On Maximum call stack depth on error = 20
	On NLB file directory is based on the location of the .EXE (standalone), .DSW (C++), or .SLN (Visual Studio).

Category	Settings
API Call Reporting	Off Enable API call reporting. <i>All selections are unavailable until you select this item.</i> <ul style="list-style-type: none"> - Collect window messages - <i>Default when active: Off</i> - Collect API method calls and returns. - <i>Default when active: On</i> - View only modules needed by this application - <i>Default when active: On</i> - All modules (tree view). - <i>Default when active: All selected</i>
Call Validation	Off Enable call validation. <i>All selections unavailable until you select this item</i> <ul style="list-style-type: none"> - Enable memory block checking - <i>Default when active: Off</i> - Fill output arguments before call - <i>Default when active: Off</i> - COM failure codes - <i>Default when active: On</i> - Check for COM "Not Implemented" return code - <i>Default when active: On</i> - API failure codes - <i>Default when active: On</i> - Check invalid parameter errors: API, COM - <i>Default when active: both On</i> - Category: Handle and pointer arguments - <i>Default when active: On</i> - Category: Flag, range and enumeration arguments - <i>Default when active: On</i> - Check statically linked C run-time library APIs - <i>Default when active: On</i> - DLLs to check for API errors (failures or invalid arguments) - <i>Default when active: All items selected</i>
COM Call Reporting	Off Enable COM method call reporting on objects that are implemented in the selected modules <ul style="list-style-type: none"> - Report COM method calls on objects implemented outside of the listed modules - <i>Default when active: On</i> - All components tree view - <i>Default when active: All selected</i>
COM Object Tracking	Off Enable COM object tracking <ul style="list-style-type: none"> - Refresh from Registry - <i>Default when active: (Enabled)</i> - All COM classes tree view - <i>Default when active: All selected</i>
Deadlock Analysis	Off Enable deadlock analysis <ul style="list-style-type: none"> - Assume single process - <i>Default when active: On</i> - Enable watcher thread - <i>Default when active: Off</i> - Generate errors when: A critical section is re-entered - <i>Default when active: Off</i> - Generate errors when: A wait is requested on an owned mutex - <i>Default when active: Off</i>

Category	Settings
Deadlock Analysis (continued)	<ul style="list-style-type: none"> - Number of historical events per resource - <i>Default when active: 10</i> - Report synchronization API timeouts - <i>Default when active: Off</i> - Report wait limits or actual waits exceeding (seconds) - <i>Default when active: 60</i> - Synchronization Naming Rules - <i>Default when active: Don't warn about resource naming</i>
Memory Tracking	<ul style="list-style-type: none"> On Enable memory tracking Off Enable Leak Analysis Only Off Show leaked allocator blocks On Enable FinalCheck On Enforce strict reallocation semantics On Enable guard bytes; Pattern: (0x) = FC; Count = 4 bytes <ul style="list-style-type: none"> - Check heap blocks at runtime: On free On Enable fill on allocation; Pattern: (0x) = FB On Check uninitialized memory; Size = 2 bytes On Enable poison on free; Pattern: (0x) = FD
.NET Analysis	<ul style="list-style-type: none"> Off Enable .NET analysis <ul style="list-style-type: none"> - Exception monitoring - <i>Default when active: On</i> - Finalizer monitoring - <i>Default when active: On</i> - COM interop monitoring - <i>Default when active: On</i> - PInvoke interop monitoring - <i>Default when active: On</i> - Interop reporting threshold - <i>Default when active: 1</i>
.NET Call Reporting	<ul style="list-style-type: none"> Off Enable .NET method call reporting <ul style="list-style-type: none"> - All types (tree view node) - <i>Default when active: Selected.</i> - .NET User Assemblies (tree view node) - <i>Default when active: Selected</i> - .NET System Assemblies (tree view node) - <i>Default when active: Not selected</i>
Resource Tracking	<ul style="list-style-type: none"> On Enable resource tracking On Resources tree view. All listed resources are selected by default

Error Detection Toolbar in Visual Studio



Error Detection Window

Results Pane
Summary, Memory Leaks, Other Leaks, Errors, .NET Performance, Modules, Transcript tabs provide overview and detail about detected errors.

Details Pane
Displays long description of detected error; call stack information; reference count graph (see inset below).

Source Pane
Displays source code for the detected error, if available.

Details Pane - Reference Count Graph
Displays Reference Count View and Object Identity View tabs when you select an Interface Leak in the Results pane.

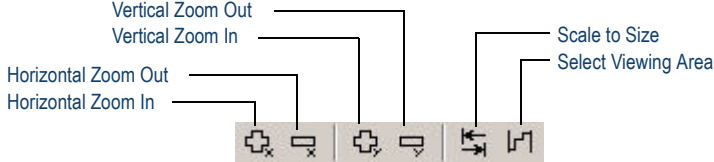
Icons Used in the Results Pane

Icon	Description	Appears in...
	Memory Leaks	Summary, Memory Leaks, and Transcript tabs
	Other Leaks	Summary, Other Leaks, and Transcript tabs
	Errors	Summary, Errors, and Transcript tabs
	.NET Performance	Summary, .NET Performance tabs
	Module Load Event	Summary, Modules, and Transcript tabs
	Subroutine call	Transcript tab
	Garbage Collection Event	Transcript tab
	Event Begins	Transcript tab
	Event Resumes	Transcript tab
	Event Ends	Transcript tab

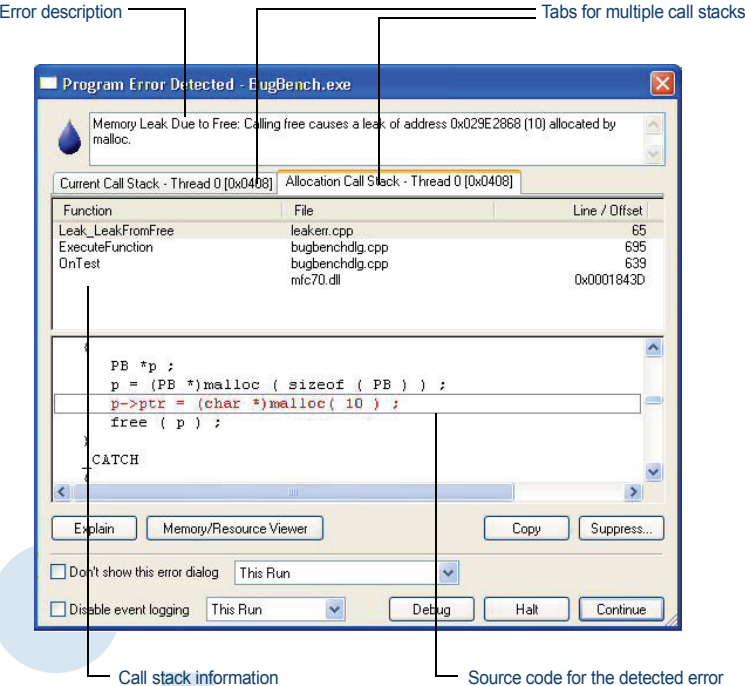
Icons Used in the Details Pane

Icon	Description
	Subroutine call
	Entry Parameters
	Exit Parameters
	Return Value
	Property (default) for data types
	Property for data types

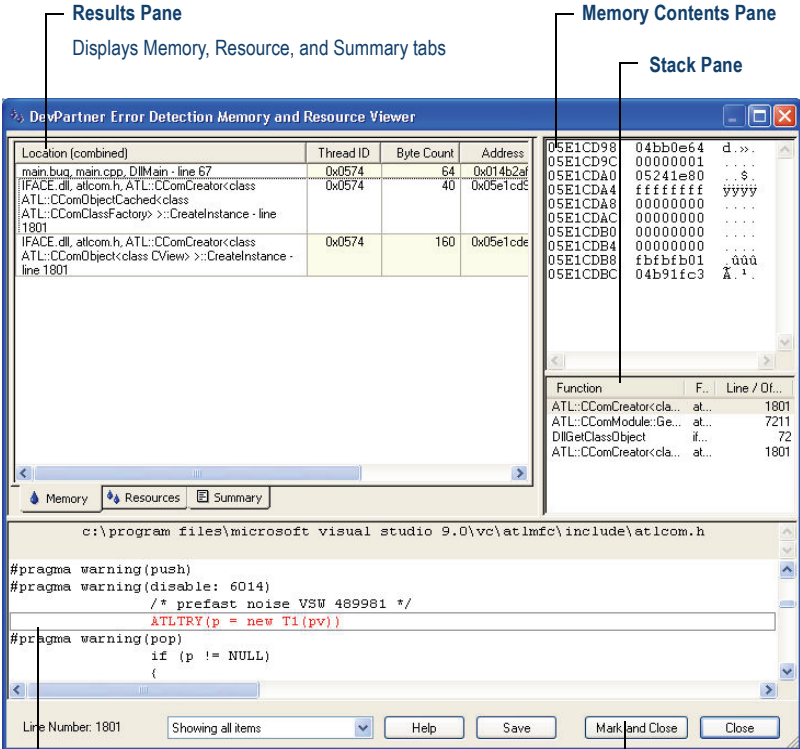
Reference Count Graph Toolbar



Program Error Detected Dialog Box



Memory and Resource Viewer Dialog Box



ActiveCheck and FinalCheck Error Detection

ActiveCheck

ActiveCheck™ analyzes your program and searches for errors in your program executable as well as the dynamic-link libraries (DLLs), third-party modules, and COM components used by your program. The following tables list the types of errors found with ActiveCheck error detection.

Deadlock-related Errors	API and COM Errors
Deadlock	COM interface method failure
Potential deadlock	Invalid argument
Thread deadlocked	Parameter range error
Critical section errors	Questionable use of thread
Semaphore errors	Windows function failed
Resource usage and naming errors	Windows function not implemented
Suspicious or questionable resource usage	Invalid COM interface method argument
Handle errors	
Event errors	
Mutex errors	
Windows event errors	

.NET Errors	Pointer and Leak Errors
Finalizer errors	Interface leak
GC.Suppress finalize not called	Memory leak
Dispose attributes errors	Resource leak
Unhandled native exception passed to managed code	

Memory Errors
Dynamic memory overrun
Freed handle is still locked
Handle is already unlocked
Memory allocation conflict
Pointer references unlocked memory block
Stack memory overrun
Static memory overrun

FinalCheck Compile Time Instrumentation - Deepest Error Detection

FinalCheck™ compile time instrumentation (CTI) enables Error Detection to find more errors (memory leaks, pointer errors, data corruption errors, and so on) as they occur in real time. FinalCheck finds these types of errors, plus all errors found with ActiveCheck.

Memory Errors	Pointer and Leak Errors
Reading overflows buffer	Array index out of range
Reading uninitialized memory	Assigning pointer out of range
Writing overflows buffer	Expression uses dangling pointer
	Expression uses unrelated pointers
	Function pointer is not a function
	Leak due to leak
	Leak due to module unload
	Leak due to unwind
	Memory leaked due to free
	Memory leaked due to reassignment
	Memory leaked leaving scope
	Returning pointer to local variable



List of Available Keyboard Commands - Visual Studio

Command	Action
Ctrl+Shift+O	File > Open > Project
Ctrl+Shift+N	File > New > Project
Ctrl+S	File > Save Project
Ctrl+Shift+S	File > Save All
Ctrl+Shift+F	Edit > Find in Files
Ctrl+Shift+H	Edit > Replace in Files
Alt+F12	Edit > Find Symbol
Ctrl+Alt+L	View > Solution Explorer
Ctrl+Shift+C	View > Class View
Ctrl+Alt+S	View > Server Explorer
Ctrl+Shift+E	View > Resource View
F4	View > Properties Window
Ctrl+Alt+X	View > Toolbox
Shift+Alt+Enter	View > Full Screen
Shift+F4	View > Property Pages
Ctrl+Shift+B	Build > Build Solution
F5	Debug > Start
Ctrl+F5	Debug > Start Without Debugging
Ctrl+Alt+E	Debug > Exceptions
F11	Debug > Step Into
F10	Debug > Step Over
Ctrl+B	Debug > New Breakpoint
Ctrl+F1	Help > Dynamic Help*
Ctrl+Alt+F1	Help > Contents*
Ctrl+Alt+F2	Help > Index*
Ctrl+Alt+F3	Help > Search*
Shift+Alt+F2	Help > Index results*
Shift+Alt+F3	Help > Search results*

* Visual Studio 2005, 2008

Export DevPartner Data: Command Line Use

You can use DevPartner.Analysis.DataExport.exe from the command line to convert DevPartner coverage analysis (.dpcov), coverage analysis merge (.dpmrg), performance analysis (.dpprf), and Performance Expert (.dppxp) session file data to XML.

Use this syntax to export session data to XML:

```
DevPartner.Analysis.DataExport.exe [sessionfilename|pathtodirectory] {options}
```

Options

The following table lists the command line options for DevPartner.Analysis.DataExport.exe.

You can use an equal sign, a colon, or a space to separate an option from the value or values you specify.

Switch	Description
/out [put] =<String>	Specify the local or remote output directory for exported XML files. Creates the directory if the directory does not exist
/r [recurse]	Search subdirectories for DevPartner Session Files.
/f [filename] =<String>	Specify the name of the XML output file. Appends .xml to the name specified.
/showAll	Shows all performance and coverage session file data available in a performance or coverage session file. For example, if you export a performance session file with this option, the resulting XML file contains both performance and coverage data fields. This option is not available for Performance Expert session files.
/w [ait]	Wait for input before closing console window.
/nologo	Do not display the logo or copyright notice.
/help or /?	Display help in the console window.
/summary	Export Performance Expert summary data which includes a default maximum of the top ten callpaths and the top ten methods that use the most CPU resources. Use the /maxpaths and /maxmethods options to override the maximums.
/method	Exports Performance Expert method data.
/calltree	Export Performance Expert call tree data.
/maxpaths=<integer>	Used only with the Performance Expert /summary option. Exports the specified number of the top call paths that use the most CPU resources.
/maxmethods=<integer>	Used only with the Performance Expert /summary option. Exports the specified number of the top methods that use the most CPU resources.