

AccuRev® Plug-In for Eclipse™

Installation and Release Notes

Version 2013.5

Revised 10/9/13

Copyright © AccuRev, Inc. 1995–2013

ALL RIGHTS RESERVED

This product incorporates technology that may be covered by one or more of the following patents: U.S. Patent Numbers: 7,437,722; 7,614,038.

TimeSafe and **AccuRev** are registered trademarks of AccuRev, Inc.

AccuBridge, **AccuReplica**, **AccuWork**, **AccuWorkflow**, **Kando** and **StreamBrowser** are trademarks of AccuRev, Inc.

All other trade names, trademarks, and service marks used in this document are the property of their respective owners.

Table of Contents

Preface	v
Using This Book	v
Typographical Conventions	v
Contacting Technical Support.....	vi
License Issues	vi
Other Support Issues.....	vi
Other Resources.....	vi
1. Introduction	1
Highlights of this Release	1
What to Do Next	1
2. Installing AccuRev Plug-In for Eclipse	3
Platform Support	3
Installing on Eclipse 3.5, 3.6, 3.7, or 4.x.....	3
Adding the AccuRev Update Site.....	3
Installing AccuRev Plug-In for Eclipse.....	4
Installing on Eclipse C/C++ Development Tooling (CDT) Installations	6
Installing on Wind River Workbench.....	6
Verifying the Installation.....	6
Uninstalling AccuRev Plug-In for Eclipse	6
Installing on Eclipse 3.4.....	7
Adding the AccuRev Update Site.....	7
Installing AccuRev Plug-In for Eclipse.....	7
Verifying the Installation.....	8
Updating AccuRev Plug-In for Eclipse	8
Uninstalling AccuRev Plug-In for Eclipse	8
Installing on Eclipse 3.3.....	8
Adding the AccuRev Update Site.....	8
Installing AccuRev Plug-In for Eclipse.....	9
Verifying the Installation.....	9
Updating AccuRev Plug-In for Eclipse	9
Disabling and Uninstalling AccuRev Plug-In for Eclipse.....	9
Setting Up a Local Update Site.....	10
Configuring Access to the AccuRev Web Interface	10
Features Available through the Web UI.....	10
Before You Begin.....	11
How to Configure the AccuRev Web UI.....	11
Adding AccuRev Executables to the PATH (<i>Mac OS X Only</i>)	12
Enabling the AccuRev Diff Tool to Work as a Standalone (<i>Mac OS X Only</i>)	12
The AccuRev Diff Tool Must be on Your PATH (<i>Linux/Unix Only</i>)	13

3. Release Notes	15
Version 2013.5	15
AccuRev Plug-In for Eclipse Integration with Mylyn	16
Adding an AccuWork Task Repository.....	16
Logging In to an AccuWork Task Repository.....	18
Removing an AccuWork Task Repository from Your Mylyn View.....	19
Creating an AccuWork Query	19
Running an AccuWork Query	22
Editing an AccuWork Query	22
Version 2013.4	23
Version 2013.3	24
Version 2013.2	26
Version 2013.1	27

Preface

This book is your guide to installing AccuRev Plug-In for Eclipse (AccuRev Plug-In). It is intended for the AccuRev system administrator. This book provides information specific to this release, including notes on platform support and a summary of changes for the current and recent releases.

See the *AccuRev Plug-In for Eclipse User's Guide* for information about using the AccuRev Plug-In within the Eclipse environment.

For news on this product, visit the integrations page on the AccuRev Web site:

<http://www.accurev.com/integrations.html>.

Using This Book

This book assumes you are familiar with your operating system and its commands, as well as with AccuRev and Eclipse. The remaining chapters in this book tell you how to prepare for and install AccuRev Plug-In and provide information on features, fixes, and known issues in the current and recent releases:

Chapter	Description
<i>Chapter 1 Introduction</i>	Introduces the current release and describes its highlights.
<i>Chapter 2 Installing AccuRev Plug-In for Eclipse</i>	Provides background information and procedures for installing AccuRev Plug-In.
<i>Chapter 3 Release Notes</i>	New features, fixes, and known issues in the current and recent releases.

Typographical Conventions

This book uses the following typographical conventions:

Convention	Description
<code>bl ue sans-seri f</code>	Used for sample code or output.
<code>red monospace</code>	Used for examples.
bold	Used for command names, and button names in the AccuSync Web user interface
<i>light italic</i>	Used for emphasis, book titles, and for first use of important terms
<i>blue italic</i>	Identifies a hyperlink (to a page or Web URL, for example)

Contacting Technical Support

AccuRev offers a variety of options to meet your technical support needs. For complete information about AccuRev technical support services, visit our Web site:

<http://www.accurev.com/support.html>

License Issues

If you are having trouble with a license for your AccuRev product, visit the License Self Help page first to see if there is a solution for your problem:

<http://www.accurev.com/support/license-self-help.html>

Other Support Issues

To obtain technical support for an AccuRev product:

- Go to <http://support.accurev.com/>
- Or e-mail AccuRev technical support at support@accurev.com

When you contact AccuRev technical support, please include the following information:

- The AccuRev version
- The operating system
- If you are using an AccuBridge™ or AccuSync product:
 - The product version
 - The version of the third-party system (JIRA or Rally, for example)
- A brief description of the problem you are experiencing. Be sure to include which AccuRev interface you were using (Web user interface, Java GUI, or CLI), any error messages you received, what you were doing when the error occurred, whether the problem is reproducible, and so on.
- A description of any attempts you have made to resolve the issue, including using the resources described in [Other Resources](#).
- A simple assessment of how the issue affects your organization.

Other Resources

In addition to contacting AccuRev technical support, consider taking advantage of the following resources:

- AccuRev Known Problems and Solutions – <http://www.accurev.com/support/kps.html>

The AccuRev Known Problems and Solutions page describes known problems in released versions of AccuRev products.

- AccuRev User Forum – <http://www.accurev.com/ubbthreads/>

The AccuRev User Forum is a valuable resource. In addition to access to AccuRev’s international user community, the User Forum is the place to go for resources like:

- The AccuRev knowledge base
- The AccuRev FAQ

Register as a User Forum member today.

- AccuRev documentation – <http://www.accurev.com/documentation.html>

This page provides access to AccuRev product documentation for all current and previous releases of most AccuRev products.

1. Introduction

AccuRev Plug-In for Eclipse (AccuRev Plug-In) integrates AccuRev functionality with the Eclipse Platform IDE (Integrated Development Environment).

This chapter describes the highlights of the current release.

Highlights of this Release

AccuRev Plug-In Version 2013.5 includes several enhancements and numerous bug fixes, including:

- **An integration between AccuWork and Mylyn.** AccuRev Plug-In 2013.5 contains an integration between AccuWork and Mylyn, an Eclipse plug-in that manages user tasks.
- **User documentation is unchanged.** The AccuRev Plug-In for Eclipse *User's Guide* is unchanged for this release.

What to Do Next

To install AccuRev Plug-In, see [Chapter 2 Installing AccuRev Plug-In for Eclipse](#).

For details about the specific changes introduced in this release, see [Chapter 3 Release Notes](#).

2. Installing AccuRev Plug-In for Eclipse

Before installing AccuRev Plug-In for Eclipse (AccuRev Plug-In), ensure that you have an AccuRev client on the same machine that is running Eclipse. See the *Installation and Release Notes* document for your version of AccuRev for instructions on installing AccuRev.

Note: AccuRev Plug-In version 2010.1 and later provides access to the AccuRev Web Interface (Web UI). For instructions on configuring this option, see *Configuring Access to the AccuRev Web Interface* on page 10.

Platform Support

AccuRev Plug-in version 2013.5 has been validated with Eclipse Platform Versions 4.x, 3.7.x, 3.6.x, 3.5.x, 3.4.x, and 3.3.x.

AccuRev recommends Java 2 Runtime Environment 5.0 and higher; versions 1.4.2 and higher are supported.

Installing on Eclipse 3.5, 3.6, 3.7, or 4.x

Use the procedures described in this section to add the AccuRev update site to the Eclipse repository and to install AccuRev Plug-in.

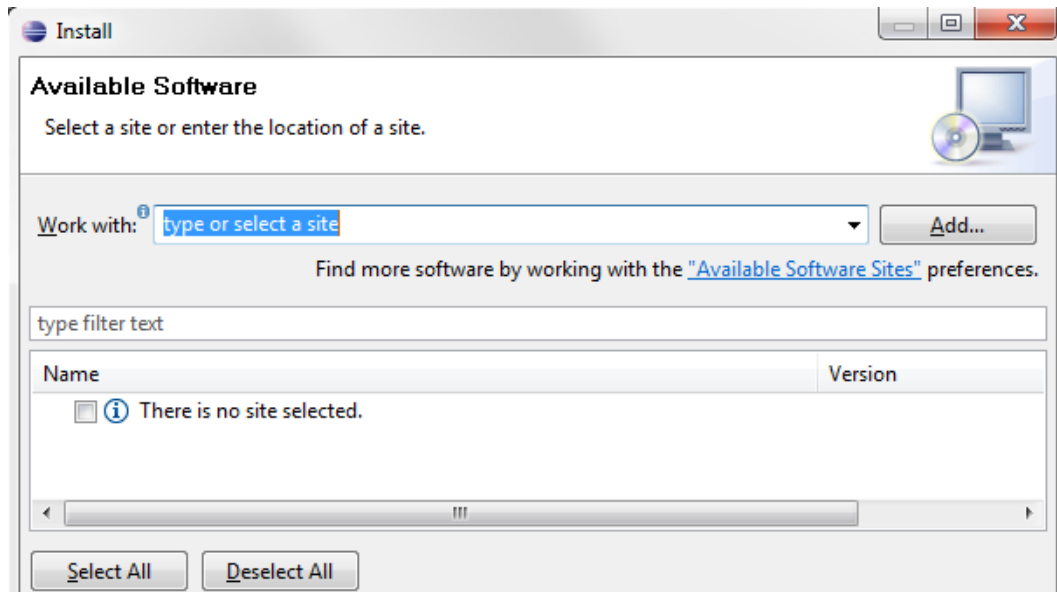
Adding the AccuRev Update Site

AccuRev provides the standard plug-in installation method for the Eclipse IDE via an update site. If you require offline or local network access to an update site for installing the plug-in, see the section titled *Setting Up a Local Update Site* on page 10.

Otherwise, follow this procedure to add the AccuRev update site to the list of sites that Eclipse can contact:

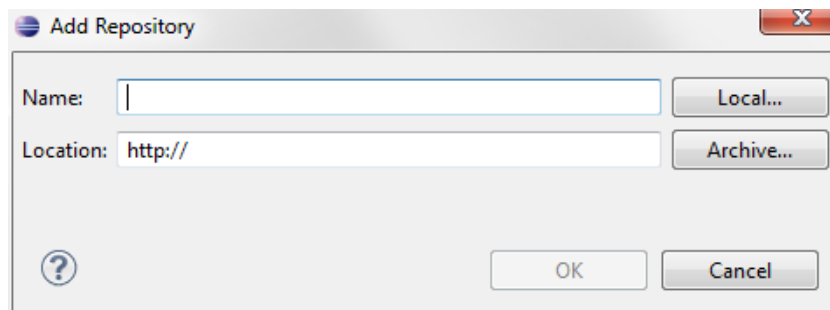
1. Start the Eclipse IDE.
2. Select **Help** > **Install New Software** from the Eclipse menu.

The first page of the Install New Software wizard appears.



3. Click **Add**.

The Add Repository dialog box appears.



4. In the Add Repository dialog box:
 - In the Name field, enter a unique name for the AccuRev Plug-In.
 - In the Location field, enter the URL of the AccuRev update site:
<http://www.accurev.com/download/eclipseupdate>
5. Click **OK** to add the AccuRev update site to the Eclipse repository.
6. To continue installing AccuRev Plug-In, go to *Step 3* in *Installing AccuRev Plug-In for Eclipse* on page 4. If you want to install AccuRev Plug-In at a later time, click **Cancel** to stop the Install New Software wizard.

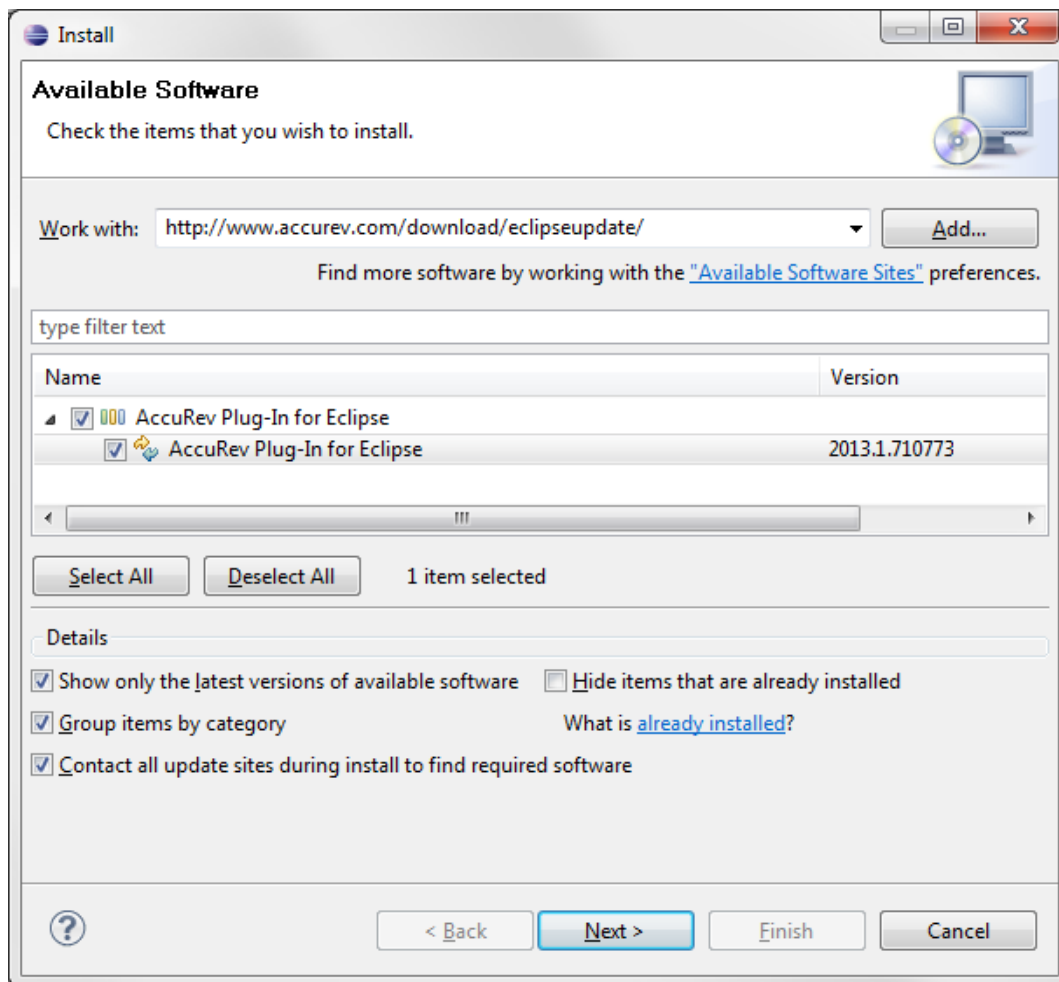
Installing AccuRev Plug-In for Eclipse

Before you begin, add the AccuRev update site to the Eclipse repository if you have not done so already. See *Adding the AccuRev Update Site* on page 3.

1. Start the Eclipse IDE.
2. Select **Help > Install New Software** from the Eclipse menu.

The first page of the Install New Software wizard appears.

3. Select the AccuRev Plug-In site from the *Work with* drop-down list.



4. Select the checkbox next to *AccuRev Plug-In for Eclipse* and click **Next**.
5. Click through the wizard to review the installation and to confirm the license agreement.

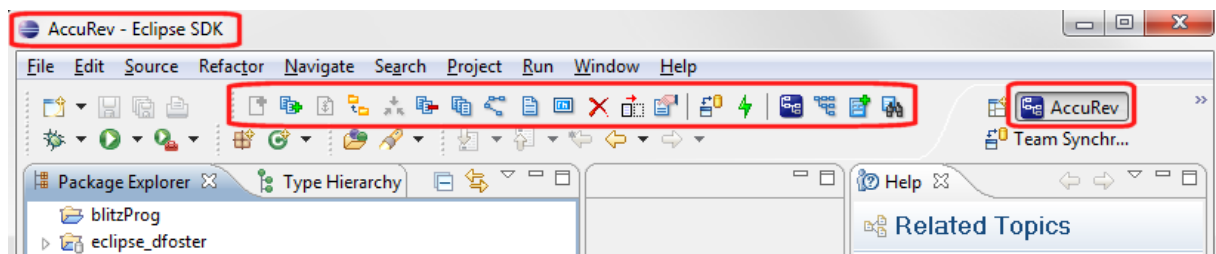
Eclipse installs AccuRev Plug-In.

Note: During installation, you might receive a security warning about unsigned content. Click **OK** to acknowledge the warning and finish the installation.

When the installation finishes, Eclipse prompts you to restart the Eclipse IDE.

6. Click **Restart Now** to restart the Eclipse IDE and complete the installation.

When you restart Eclipse, it opens in the AccuRev perspective, as shown in the following illustration:



Note: Buttons on the AccuRev toolbar are displayed as active only if you have selected a file in the Package Explorer that has been added to AccuRev.

Installing on Eclipse C/C++ Development Tooling (CDT) Installations

Installation on Eclipse CDT 3.6 requires that you first install the Java Development Tools (JDT) 3.6.1 or later. Once the JDT is installed, you can successfully install the Eclipse Plug-in.

To install the JDT on Eclipse CDT 3.6:

1. In Eclipse C++, select **Help > Install New Software** from the menu.
The Install wizard appears.
2. In the filter field following the **Work with** field, type *java*.
The table displays available Java plug-ins.
3. Select **Eclipse Java Development Tools**.
4. Click **Next** to complete the Eclipse Install wizard.

Installing on Wind River Workbench

Installation on Wind River Workbench requires that you first install the Java Development Tools (JDT) 3.6.1 or later.

To install the JDT on Wind River Workbench:

1. Select **Window > Open Perspective > Advanced Device Development** from the Workbench menu to open the Advanced Device Development perspective.
2. Select **Help > Install New Software** from the Advanced Device Development perspective menu.
3. In the Preferences dialog box, select **Install/Update > Available Software Sites**.
4. Locate and select **Eclipse Galileo Repository**, click the **Enable** button, and then click **OK**.
5. In the Install dialog box, locate and select **Eclipse Java Development Tools**.
6. Click **Next** to complete the Wind River Install wizard.

Verifying the Installation

To verify that the installation of AccuRev Plug-In was successful:

1. Start the Eclipse IDE.
2. Select **Help > About Eclipse** from the Eclipse menu.
3. Click **Installation Details**, and go to the Installed Software tab on the Eclipse SDK Installation Details dialog box.
4. Verify that an *AccuRev Plug-In for Eclipse* entry exists.

Uninstalling AccuRev Plug-In for Eclipse

1. Start the Eclipse IDE.
2. Select **Help > Install New Software** from the Eclipse menu.

3. Click **Installation Details**, and go to the Installed Software tab on the Eclipse Installation Details dialog box.
4. Highlight the *AccuRev Plug-in for Eclipse* entry.
5. Click the **Uninstall...** button.

Note: If this button is disabled, you manually installed an earlier version of AccuRev Plug-In. Instead of using this procedure, shut down the Eclipse IDE, then search for and delete files and folders in your Eclipse installation directory that start with **com.accurev.eclipse**.

6. When the Uninstall window appears, verify that you want to uninstall the items shown, and click **Finish** to uninstall the plug-in.

Installing on Eclipse 3.4

Use the procedures described in this section to add the AccuRev update site to the Eclipse repository and to install AccuRev Plug-in.

Adding the AccuRev Update Site

AccuRev provides the standard plug-in installation method for the Eclipse IDE via an update site. If you require offline or local network access to an update site for installing the plug-in, see the section titled *Setting Up a Local Update Site* on page 10.

Otherwise, follow this procedure to add the update site to the list of sites that Eclipse can contact:

1. Start the Eclipse IDE.
2. Select **Help > Software Updates** from the Eclipse menu, and go to the Available Software tab on the Software Updates and Add-ons window that appears.
3. Click **Add Site**.
4. Fill in the AccuRev update site URL (<http://www.accurev.com/download/eclipseupdate>) in the Location field, and click **OK**. The new update site appears on the list of remote sites.

Installing AccuRev Plug-In for Eclipse

To install AccuRev Plug-In after creating the new remote site:

1. Select **Help > Software Updates** from the Eclipse menu, and go to the Available Software tab on the Software Updates and Add-ons window that appears.
2. Expand the AccuRev update site in the list.
3. Select the checkbox next to *AccuRev Plug-in for Eclipse* and click **Install** to proceed.
4. Click **Next** to confirm.
5. Accept the license agreement and click **Next** to proceed.
6. Click **Finish** to install the plug in.
7. Restart the Eclipse IDE to complete the installation.

Verifying the Installation

AccuRev Plug-in will be loaded and enabled automatically when you restart Eclipse. To verify that the installation was successful:

1. Start the Eclipse IDE.
2. Select **Help > Software Updates** from the Eclipse menu and go to the Installed Software tab on the Software Updates and Add-ons window that appears.
3. Verify that an *AccuRev Plug-in for Eclipse* entry exists in the configuration window.

Updating AccuRev Plug-In for Eclipse

If an older version of the AccuRev Plug-In is currently included in your Eclipse configuration, you will need to uninstall it and add a new update site as described in [Adding the AccuRev Update Site](#) on page 7 and [Installing AccuRev Plug-In for Eclipse](#) on page 7 to install the latest version.

Uninstalling AccuRev Plug-In for Eclipse

1. In the IDE, select **Help > Software Updates** from the Eclipse menu and go to the Installed Software tab on the Software Updates and Add-ons window that appears.
2. Highlight the *AccuRev Plug-In for Eclipse* entry.
3. Click the **Uninstall...** button.

Note: If this button is disabled, you manually installed an earlier version of AccuRev Plug-In. Instead of using this procedure, shut down the Eclipse IDE, then search for and delete files and folders in your Eclipse installation directory that start with **com.accurev.eclipse**.

4. When the Uninstall window appears, verify that you want to uninstall the checked items, and click **Finish** to uninstall the plug-in.

Installing on Eclipse 3.3

Use the procedures described in this section to add the AccuRev update site to the Eclipse repository and to install AccuRev Plug-In.

Adding the AccuRev Update Site

AccuRev provides the standard plug-in installation method for the Eclipse IDE via an update site. If you require offline or local network access to an update site for installing the plug-in, see the section titled [Setting Up a Local Update Site](#) on page 10.

Otherwise, follow this procedure to add the update site to the list of sites that Eclipse can contact:

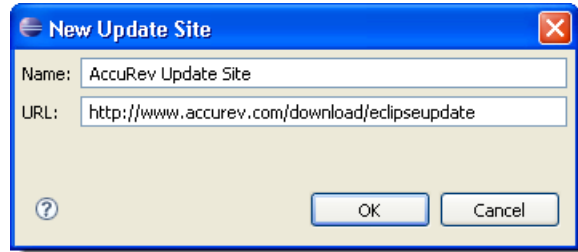
1. Start the Eclipse IDE.
2. Select **Help > Software Updates > Find and Install** from the Eclipse menu.
3. Select *Search for new features to install* on the dialog that appears, and click **Next** to proceed.
4. Click **New Remote Site**.

5. Fill in the Name and URL of the update site on the New Update Site dialog, and click **OK** to proceed.

The new update site appears on the list of remote sites.

6. Click **Finish** to update the list of sites and search for features available on the new site.

An Updates dialog will display if there are new plug-ins or features available.



Installing AccuRev Plug-In for Eclipse

To install AccuRev Plug-In after creating the new remote site:

1. Expand the tree on the Updates dialog to show the available software.
2. Select the checkbox next to *AccuRev Plug-in for Eclipse* and click **Next** to proceed.
3. Accept the license agreement and click **Next**. (You may be presented with optional features; ignore this prompt and proceed to the next screen. These features are specific to Eclipse 3.4.)
4. Click **Finish** to install the plug-in.
5. Verify that you want to install an unsigned feature by clicking **Install All**.
6. Restart the Eclipse IDE to complete the installation.

Verifying the Installation

The AccuRev Plug-In will be loaded and enabled automatically when you restart Eclipse. To verify successful installation:

1. Start the Eclipse IDE.
2. Select **Help > Software Updates > Manage Configuration** from the Eclipse menu, then expand the entry that indicates the pathname of your Eclipse installation.
3. Verify that an *AccuRev Plug-In for Eclipse* entry exists in the configuration window.

Updating AccuRev Plug-In for Eclipse

If an older version of AccuRev Plug-In is currently included in your Eclipse configuration, you will need to uninstall it and add a new update site as described in [Adding the AccuRev Update Site](#) on page 8 to install the latest version.

The Updates dialog will display to install the new plug-in. Follow the prompts to finish the installation.

Disabling and Uninstalling AccuRev Plug-In for Eclipse

A plug-in to Eclipse can be disabled, which prevents the feature from being used, but leaves the feature installed on your machine. Once it has been disabled, a plug-in can be uninstalled.

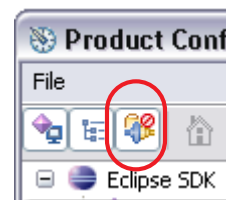
Disabling AccuRev Plug-In for Eclipse

1. Select **Help > Software Updates > Manage Configuration** from the Eclipse menu, to display the Product Configuration window.

2. Expand the entry that indicates the pathname of your Eclipse installation.
3. Select the **AccuRev Plug-In for Eclipse** subentry.
4. Click the Disable task link, and click **OK** in the confirmation dialog.
5. Click **Yes** in the dialog that offers to restart Eclipse.

Uninstalling AccuRev Plug-In for Eclipse

1. Disable AccuRev Plug-In, as described in *Disabling AccuRev Plug-In for Eclipse*.
2. Select **Help > Software Updates > Manage Configuration** from the Eclipse menu, to display the Product Configuration window.
3. Click the **Show Disabled Features** toolbar button.
4. Expand the entry that indicates the pathname of your Eclipse installation.
5. Select the **AccuRev Plug-In for Eclipse** subentry.
6. Click the Uninstall task link, and click **OK** in the confirmation dialog.
7. Click **Yes** in the dialog that offers to restart Eclipse.



Setting Up a Local Update Site

If your organization's IT policies do not allow regular Eclipse plug-in updates using a remote update site, you can create an update site on your local network instead.

To create a local update site:

1. Create a directory on a network accessible machine called **AccuRevPlugIn_update** or something similar.
2. Using a Web browser, access the AccuRev Plug-In download page:
<http://www.accurev.com/customer-support-resources/downloads/integration-packages>
3. Download the .zip file for the AccuRev Plug-In (**AccuRevPlugIn_Eclipse_2013_1.zip**, for example) to the local **AccuRevPlugIn_update** directory you created in *Step 1*.
4. Extract the .zip file contents to the **AccuRevPlugIn_update** directory.
5. Distribute the location of the **AccuRevPlugIn_update** directory to the AccuRev Plug-In users in your organization. They can then define a new update site using the **AccuRevPlugIn_update** directory. (Eclipse 3.3 users must specify a **New Local Site**.)

Configuring Access to the AccuRev Web Interface

Version 2010.1 and later of AccuRev Plug-in provide access to the AccuRev Web Interface (Web UI). This section describes how to configure the AccuRev Web UI to work with Eclipse.

Features Available through the Web UI

When you configure access to the AccuRev Web UI, you make the following features available to your users:

- Version Browser

- StreamBrowser™
- Annotate
- Create New Issue
- Open Issue Queries

Before You Begin

Before performing the configuration procedure, obtain the URL used to access the Web UI. For example, <http://localhost:8080/accurev>. You will need this URL to complete the configuration procedure.

How to Configure the AccuRev Web UI

To configure the AccuRev Web UI to work with Eclipse, you need to modify the AccuRev Server **settings.xml** file as described in the following procedure:

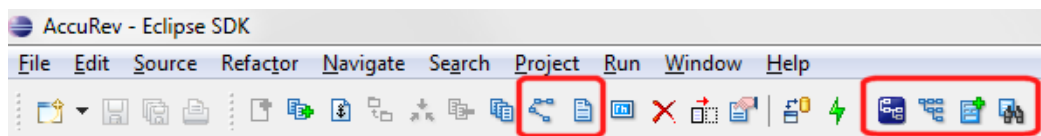
1. Shut down Eclipse.
2. Create a file called **settings.xml** and add these lines:

```
<settings>
    <webui url="http://webui-host:port/accurev" />
</settings>
```

Where **webui-host:port** is the server name and port of the server hosting the AccuRev Web UI -- localhost:8080, for example.

3. On the AccuRev Server, save **settings.xml** in the **storage\site_slice\dispatch\config** directory where you installed AccuRev.
4. If you are using AccuRev replica servers, create and save **settings.xml** to the **storage\site_slice\dispatch\config** directories on those machines as well.
5. Restart Eclipse.

Several new buttons appear on the AccuRev perspective toolbar as shown in the following illustration:



The highlighted groups of buttons are for features that are accessible only after access to the Web UI has been configured:

- Version Browser
 - Annotate
 - Open the Web UI
 - Open the StreamBrowser™
 - Create New Issue
 - Open Issue Queries
6. Click the **Open Web UI** button to start the AccuRev Web UI within the Eclipse framework.

Note: If you are not already logged in to AccuRev, you are prompted to do so. See Logging In to AccuRev in the *Eclipse Plug-in for AccuRev User's Guide* for more information.

Adding AccuRev Executables to the PATH (*Mac OS X Only*)

To ensure that all AccuRev executables are on your system's PATH, create the following files as "sudo":

- **/etc/paths.d/AccuRev.** For example:

```
sudo echo "/Applications/AccuRev/bin" > /etc/paths.d/AccuRev
```
- **/etc/paths.d/Acdiffgui.** For example:

```
sudo echo "/Applications/AccuRev/bin/acdiffgui.app/Contents/MacOS" > /etc/paths.d/Acdiffgui
```
- **/etc/paths.d/Acgui.** For example:

```
sudo echo "/Applications/AccuRev/bin/acgui.app/Contents/MacOS" > /etc/paths.d/Acgui
```

Enabling the AccuRev Diff Tool to Work as a Standalone (*Mac OS X Only*)

To enable the AccuRev **diff** GUI tool (`acdiffgui`) to work stand-alone as well as from an IDE integration such as Eclipse, do the following:

1. Make a backup copy of `acdiffgui`:

```
cd /Applications/AccuRev/bin/acdiffgui.app/Contents/MacOS
mv acdiffgui acdiffgui.orig
```

2. Create a new `acdiffgui` file with the following content:

```
#!/usr/bin/perl

$cmd = "java -Duser.dir=/Applications/AccuRev/bin -Xms32M -Xmx512M
-classpath \"/Applications/AccuRev/bin/oro.jar:/Applications/AccuRev/bin/
xercesImpl.jar:/Applications/AccuRev/bin/xml-apis.jar:/Applications/
AccuRev/bin/fw.jar:/Applications/AccuRev/bin/werken.opt.jar:/Applications/
AccuRev/bin/diff.jar\" diff.DiffApp ";

foreach $arg(@ARGV){
    $cmd .= "\"$arg\" ";
}

system ($cmd);
```

3. Close any shells.
4. Open a new shell.

Running `acdiffgui` should now bring up the AccuRev graphical diff tool, and it should also work from within any integrated IDE.

The AccuRev Diff Tool Must be on Your PATH (*Linux/Unix Only*)

The **Merge** and **Diff Against** commands in the AccuRev perspective rely on access to the **acdifftool** executable (which is part of the AccuRev product installation). If the **acdifftool** executable or a link to it is not in your PATH and accessible by the currently logged-in user, these operations will fail silently.

3. Release Notes

This chapter describes the changes to AccuRev® Plug-In for Eclipse (AccuRev Plug-In) in version 2013.5, as well as previous AccuRev Plug-In releases.

Version 2013.5

31152 -- The Promote dialog box appears unexpectedly

In previous releases, the Promote dialog box appeared unexpectedly when the user shared a project under certain conditions, such as when the project status had been excluded or was external. This problem has been corrected in the current release.

31081 -- AccuRev Plug-In generates exceptions if the Eclipse workspace is unavailable

In previous releases, some users experienced problems when AccuRev Plug-In loaded and attempted to access the Eclipse workspace before it became available. This problem has been corrected in the current release.

31080 -- Add to Ignore option fails to handle Japanese file names correctly

In previous releases, the **Team > Add to Ignore** option did not work correctly when file names contained Japanese characters. This problem has been corrected in the current release.

31079 -- Attempting to log on in Japanese produces extraneous characters

In previous releases, Japanese characters appeared twice when users attempted to log in using the Web UI in Eclipse. This problem has been corrected in the current release.

30914 -- The FilteredEventReader produces an error with IBM's JVM 6

In previous releases, using the FilteredEventReader command with IBM's implementation of JVM 6 in version 8 of the IBM Rational Application Developer produced an error. This problem has been corrected in the current release.

30843 -- Debug information enhanced to track the servers.xml file

This release of AccuRev Plug-In contains additional debugging information related to the servers.xml file for the purpose of tracking the location of this file.

30794 -- Cannot promote changes if a pre-promote trigger exists

In previous releases, AccuRev Plug-In users were not able to promote changes when a pre-promote trigger existed, except to the Default issue. This problem has been corrected in the current release.

30780 -- Cannot promote changes if the client dispatch promote trigger is not set

In previous releases, AccuRev Plug-In users could only promote changes to an issue if the client dispatch promote trigger was set. This problem has been corrected in the current release.

30587 -- The message.properties file contains duplicate entries

In previous releases, the following duplicated keys in the messages.properties file caused problems with some third-party tools: LOGIN, COMPARE_LABEL, ISSUES_COLUMN. These duplicated keys have been eliminated and this problem has been corrected in the current release.

30394 -- AccuRev Plug-In does not work with RAD 8.0.4

In previous releases, the AccuRev plug-in for Eclipse did not work correctly with IBM Rational Application Developer version 8.0.4. This problem has been corrected in the current release.

30236 -- The Merge/Diff tool does not handle UTF-8 characters in the filename

In previous releases, the Merge/Diff tool would not start if a file name contained a UTF-8 character. This problem has been corrected in the current release.

28779 -- Using Mylyn with AccuWork

The AccuRev Plug-In for Eclipse now supports using Mylyn with AccuWork. For more information, see *AccuRev Plug-In for Eclipse Integration with Mylyn* on page 16.

27590 -- The Diff Against menu option should be moved away from Revert To option

In previous releases, the **Diff Against > Backed Version** menu option was adjacent to the **Revert To > Backed Version** menu option. In the current release, the **Diff Against Backed Version** has been moved adjacent to the **Version Browser** option.

AccuRev Plug-In for Eclipse Integration with Mylyn

AccuRev Plug-In for Eclipse version 2013.5 supports an integration between AccuWork and Mylyn. Mylyn is an Eclipse plug-in that manages user tasks. You can use the AccuRev Plug-In for Eclipse integration with Mylyn to perform AccuWork procedures within the Eclipse interface, such as creating and managing AccuWork queries and issues.

Note: The Mylyn plug-in is not included when you install AccuRev Plug-In for Eclipse. If you want to use the integration between AccuWork and Mylyn, you must separately install the Mylyn plug-in.

When you install the AccuRev Plug-In for Eclipse version 2013.5, the integration with Mylyn is automatically active if the Mylyn plug-in has been installed. The procedures described in the following sections assume that you have installed the Mylyn plug-in.

Adding an AccuWork Task Repository

Before using the AccuRev Plug-In for Eclipse integration with Mylyn, you must add an AccuWork task repository.

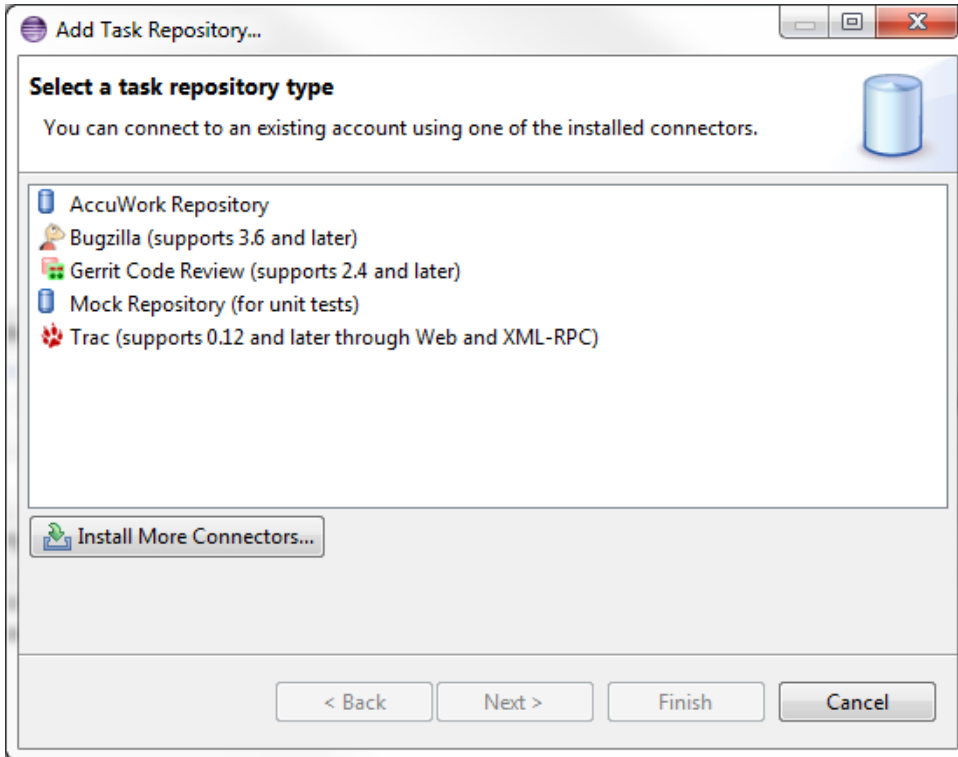
To add an AccuWork task repository:

1. In Eclipse, open the Mylyn view by selecting **Window > Show View > Other > Mylyn > Task Repositories**.

The Task Repositories tab is active.

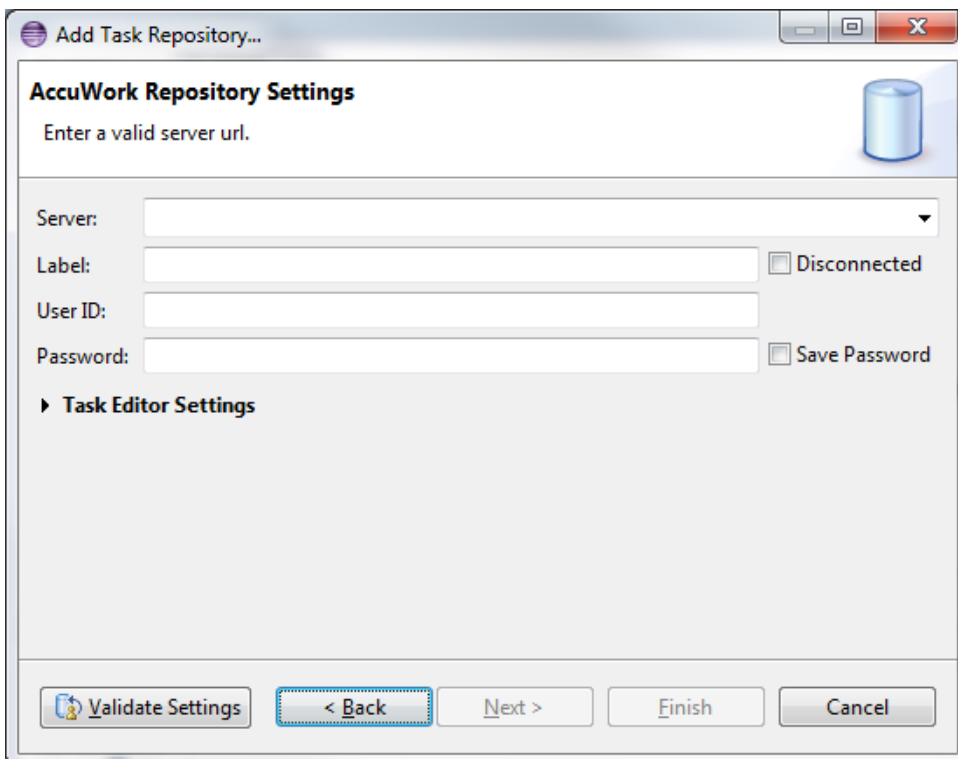
2. Click the Add Task Repository  button.

The **Select a task repository type** page of the Add Task Repository wizard appears:



3. Select the **AccuWork Repository** option and click **Next**.

The **AccuWork Repository Settings** page of the Add Task Repository wizard appears:



Specify settings on the **AccuWork Repository Settings** page of the Add Task Repository wizard as described in the following table:

Option Name	Description
Server	Your AccuRev server. The server information you enter should take the following form: <server_name>:<port_number> Note that the server must be one of the AccuRev servers that is already available to you through the AccuRev Plug-In for Eclipse.
Label	A name you designate for your AccuRev server.
Disconnected	The default state of the AccuRev server is disconnected.
User ID	Your AccuRev user name.
Password	Your AccuRev password.
Save Password	Indicates that you want Eclipse to remember your password between sessions.
Task Editor Settings	Optional settings that specify the look and feel of the Task Editor.

4. Click **Validate Settings** to confirm the accuracy of the AccuRev server settings.
5. Click **Finish** to apply the current settings and dismiss the dialog box.

Logging In to an AccuWork Task Repository

You must be connected to an AccuWork task repository before you can create and run AccuWork queries. If you are not currently connected to an AccuWork task repository, you must establish a connection by logging in to that repository.

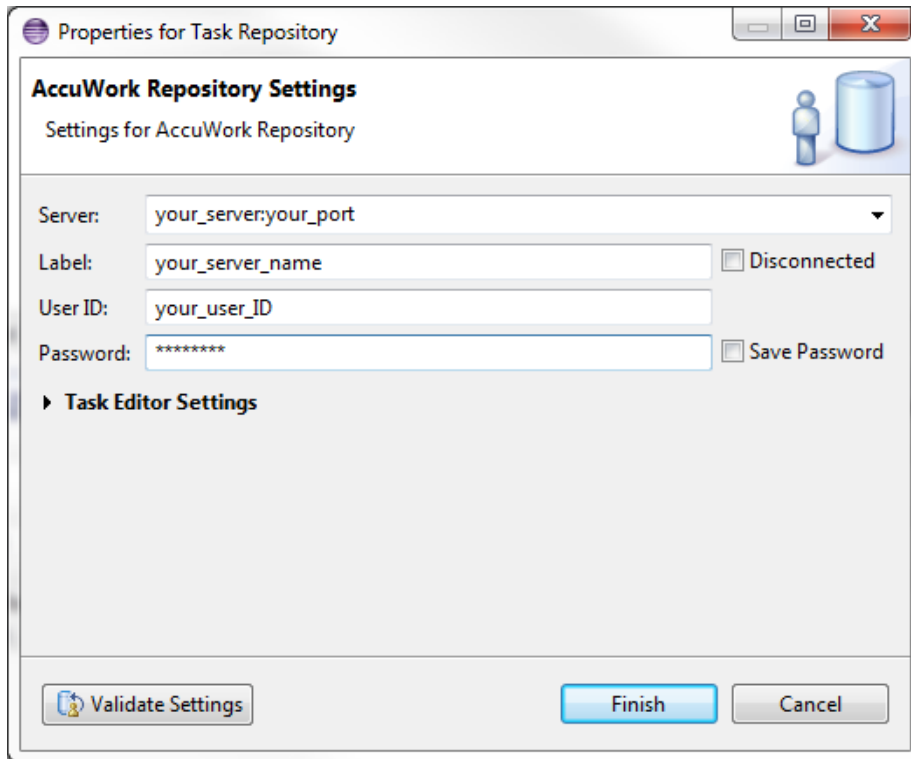
To log in to an AccuWork Task repository:

1. In Eclipse, open the Mylyn view by selecting **Window > Show View > Other > Mylyn > Task Repositories**.

The Task Repositories tab is active.

2. Right-click the name of your AccuRev Task repository and select **Properties**.

The Properties for Task Repository window appears:



3. Click **Validate Settings** to confirm the accuracy of the AccuRev server settings.
4. Click **Finish** to log in and dismiss the dialog box.

Removing an AccuWork Task Repository from Your Mylyn View

If you are no longer using an AccuWork task repository, you can remove it from your Mylyn view. Note that the following procedure only removes the repository from your view. The repository still exists and you can reconnect to it at a later time. See [Adding an AccuWork Task Repository](#) for more information.

To remove an AccuWork task repository from your Mylyn view:

1. In Eclipse, open the Mylyn view by selecting **Window > Show View > Other > Mylyn > Task Repositories**.

The Task Repositories tab is active.

2. Right-click the name of the AccuWork task repository and select **Delete**.


The task repository no longer appears in your Mylyn view.

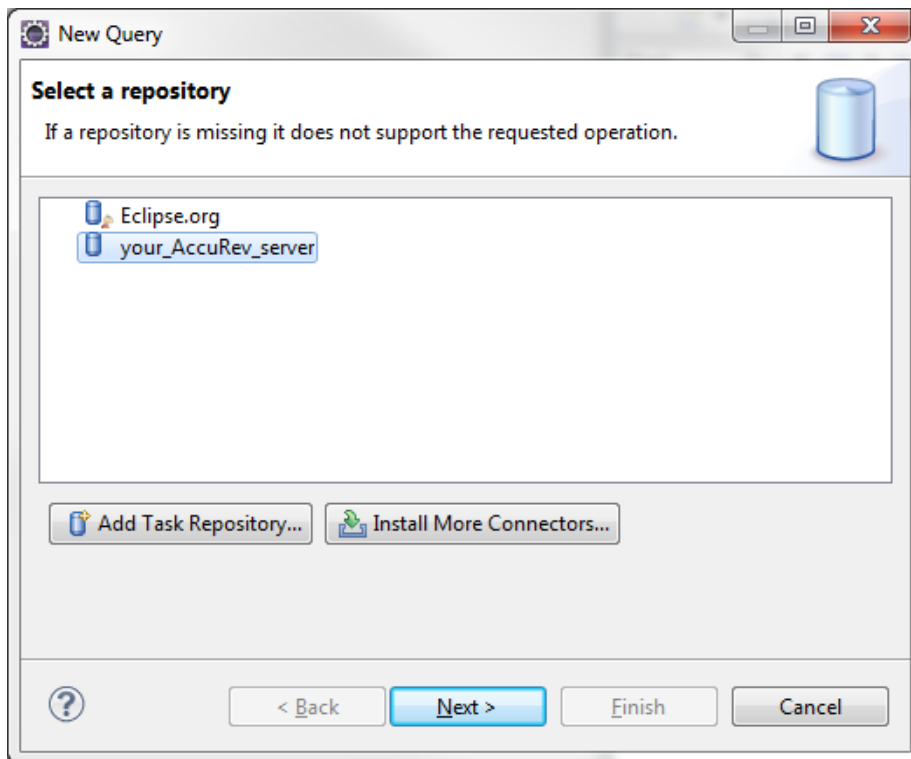
Creating an AccuWork Query

You can create and run AccuWork queries from within your Eclipse development environment by using the AccuRev Plug-In for Eclipse integration with Mylyn.

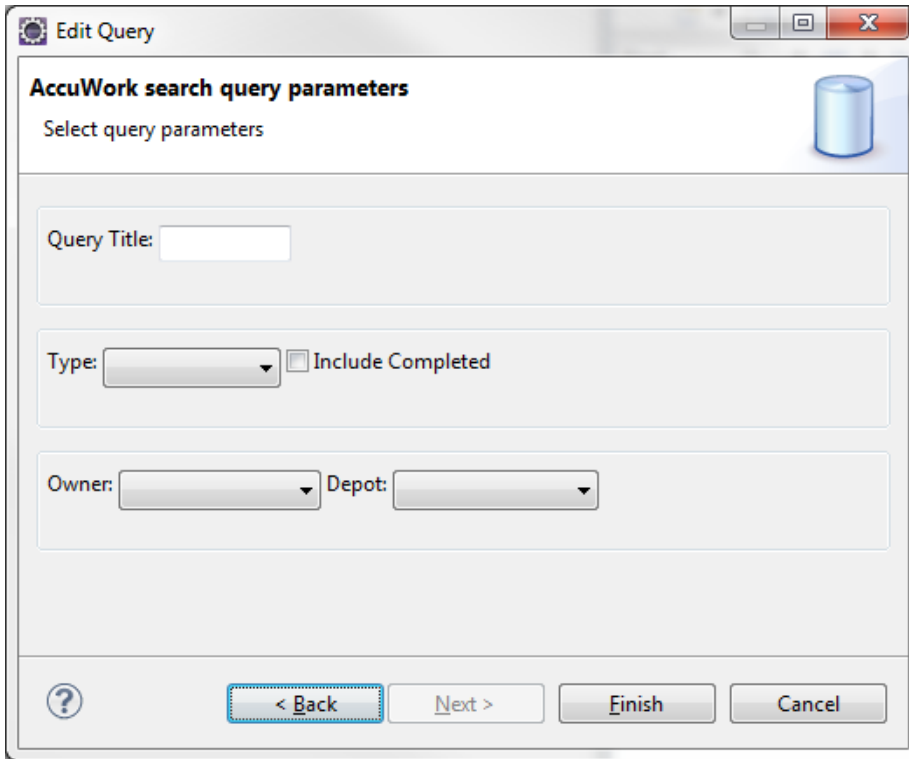
Note: Before creating an AccuWork query in Mylyn, you must specify a default query in the AccuWork Query Browser by right-clicking an existing query and selecting **Set as Default** from the context menu.

To create a new AccuWork query:

1. In Eclipse, open the Mylyn view by selecting **Window > Show View > Other > Mylyn > Task List**.
The Task List tab is active.
2. On the Mylyn Task List tab, click the **New Task** option list  and select **New Query**.
The New Query dialog box appears:



3. Select the name of your AccuRev server and click **Next**.
The Edit Query dialog box appears:

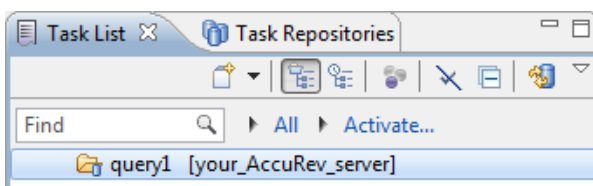


- Specify settings in the Edit Query dialog box as described in the following table:

Option Name	Description
Query Title	A name for your new query.
Type	The kind of query you want to construct, such as: defect , task , enhancement , story , or requirement .
Include Completed	Indicates that you want the query to return defects, tasks, enhancements, stories, or requirements that have already been completed.
Owner	The owner of the query. Typically, you would select your own user name.
Depot	The name of the AccuRev depot that you are querying.

- Click **Finish**.

The new query (in this case, **query1**) appears in the Task List tab in your Mylyn view, followed by the name of your AccuRev server:



Running an AccuWork Query

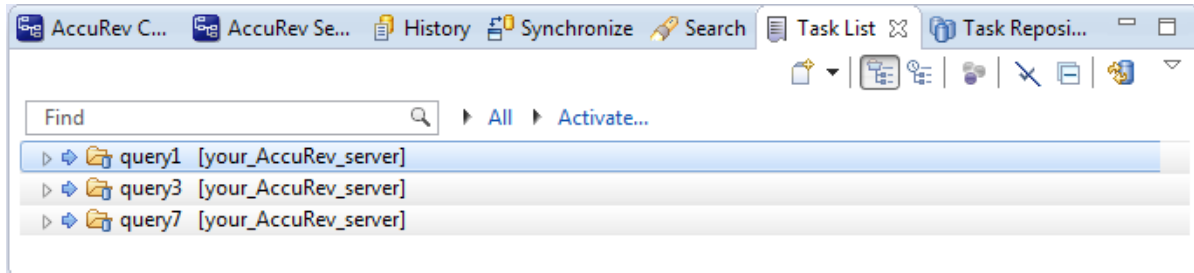
Before running an AccuWork query in a Mylyn view, you must specify a default query in the AccuWork Query Browser by right-clicking an existing query and selecting **Set as Default** from the context menu.

Note: The query results represent the AccuWork issues returned by both your Mylyn query and your AccuWork default query.

To run an AccuWork query in a Mylyn view:

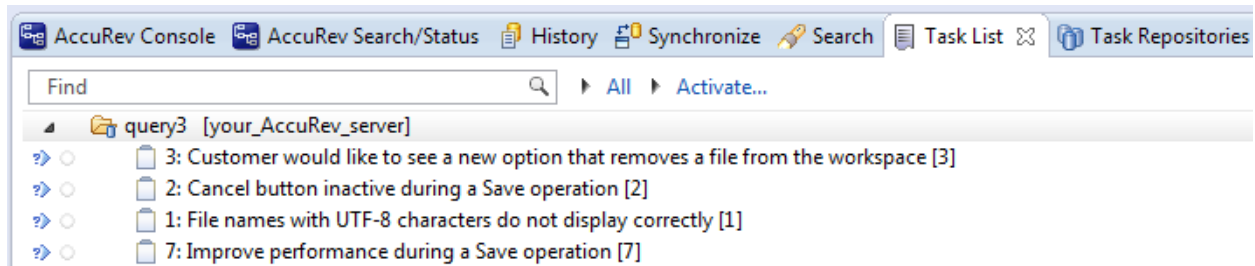
1. In Eclipse, open the Mylyn view by selecting **Window > Show View > Other > Mylyn > Task List**.

The Task List tab is active:



2. Select the name of the query you want to run and press **Enter**, or double-click the name of the query.

If the query conditions are satisfied, the results of the query appear in the Mylyn Task List tab beneath the query:



3. You can open any item that is returned by your query by selecting the item and pressing **Enter** or by double-clicking the item. You can also right-click the item and select an option from the context menu to perform a Mylyn Task operation.

Editing an AccuWork Query

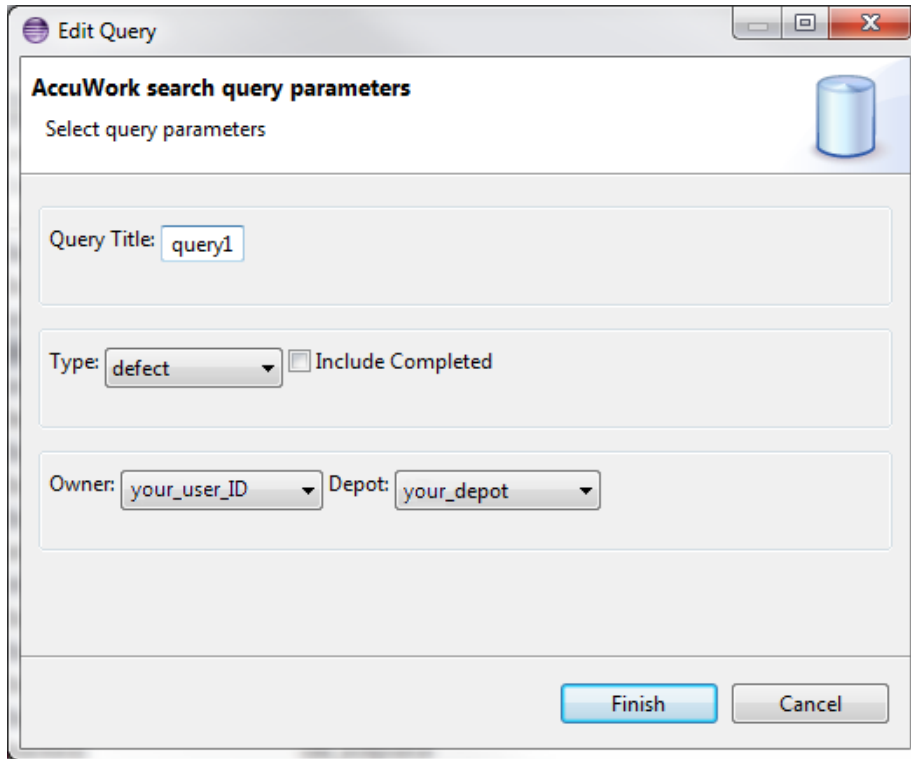
To edit an AccuWork query:

1. In Eclipse, open the Mylyn view by selecting **Window > Show View > Other > Mylyn > Task List**.

The Task List tab is active.

2. On the Mylyn Task List tab, right-click the name of the query and select **Properties** from the context menu.

The Edit Query dialog box appears:



3. Change the settings to edit the query.
4. Click **Finish** to commit your changes.

Version 2013.4

30364, 30322 -- Improvements to cut/copy/paste and delete/remove performance

In previous releases, performing cut/copy/paste and delete/remove operations on individual files took longer than expected because AccuRev Plug-In was getting status on both the file's directory and the workspace parent. This problem has been corrected in the current release, and AccuRev Plug-In now performs required operations on individual files when appropriate.

30113 -- Eclipse refresh no longer refreshes AccuRev status

In previous releases, refreshing a project using Eclipse (F5, **File > Refresh**, or choosing **Refresh** from the context menu in the Project Explorer) caused AccuRev Plug-In to perform a full refresh of the AccuRev statuses. This problem has been corrected in the current release, and AccuRev Plug-In now performs a complete refresh of AccuRev statuses only when using the **Team > Refresh > Selected Projects** (or **All Projects**) menu.

29957 -- Improvements in elink management

In previous releases, AccuRev Plug-In did not properly manage multiple elinks with the same target, which sometimes resulted in some elinks not getting refreshed. This problem has been corrected in the current release.

29899 -- AccuRev Plug-In no longer starts other jobs when refreshed

In previous releases, AccuRev Plug-In tried to resume dormant jobs started by other IDEs when it was refreshed. This problem has been corrected in the current release.

27589 -- Cannot promote without a default query

In previous releases, you could not promote changes against an issue unless you had defined a default query -- AccuRev Plug-In would display a dialog box which allowed you to promote against the default issue only. This problem has been corrected in the current release, and you can now select an issue number when promoting.

Version 2013.3

27587 -- Add to Ignore

AccuRev Plug-In has a new feature, **Team > Add to Ignore**, that allows you to quickly specify one or more files that you want AccuRev to ignore. To use this feature:

1. Locate the external files you want AccuRev to ignore (manually in the Package Explorer, or use **Team > AccuRev Searches > External**, for example).
2. Select the files you want AccuRev to ignore.
3. Right-click, and choose **Team > Add to Ignore**.

AccuRev Plug-In creates a **.acignore** file in that directory configured with the files you selected. If a **.acignore** file already exists in that directory, AccuRev Plug-In updates it with the names of the files.

28170 -- AccuRev Plug-In did not recognize existing workspaces after mapping drives

In previous releases, AccuRev Plug-In did not recognize existing workspaces if the location of the workspace was specified using a mapped drive. For example, imagine creating a workspace at **c:\accurev\my_workspaces\acme** and then mapping **c:\accurev\my_workspaces** to **J:**, so the workspace path is now **J:\acme**. If you subsequently tried to access the acme workspace through Eclipse using **J:\acme** (to share or create a new project, for example), AccuRev Plug-In would be unaware of the existing workspace. This problem has been corrected in the current release.

28745 -- AccuRev Plug-In could not get status for element-link directory structures

In previous releases, AccuRev Plug-In was not always able to determine the status of packages and files within an element-link (elink) directory. This problem has been corrected in the current release.

29014 -- AccuRev Plug-In hangs the Eclipse Project Explorer

In previous releases some operations performed in the Project Explorer would cause Eclipse to hang. This problem has been corrected in the current release.

29309 -- AccuRev servers.xml moved to user's home directory

In previous releases, AccuRev created the **servers.xml** file in the AccuRev **\bin** directory. This file contained server and session information, including the session security token. If the AccuRev Plug-In user did not have access to or permissions for the AccuRev **\bin** directory, the **servers.xml** file did not get created, AccuRev Plug-In would prompt the user to log in to AccuRev each time an operation required a call to the server. This problem has been corrected in the current release.

29341 -- Kept Status label added to available Label Decorations

In previous releases, the Kept Status label was not available on the Label Decorations page of the Preferences dialog box (**Team > AccuRev > Label Decorations**). This problem has been corrected in the current release.

The new label decoration for an element with Kept status is a white check on a blue background:



29431 -- Support for IBM RAD 8.5

AccuRev Plug-In 2013.3 supports IBM Rapid Application Development (RAD) 8.5.

29716 -- Support for Eclipse Mylyn













AccuRev Plug-In 2013.3 supports Eclipse Mylyn.

Version 2013.2

This section describes changes to AccuRev Plug-In version 2013.2.

27592 -- New label decoration icons for AccuRev statuses

AccuRev Plug-In introduces new label decoration icons to represent AccuRev statuses. The new icons are larger, easier to read at a glance, and easier to understand. Changes to the status icons are summarized in the following table:

Status	Previous Releases	Version 2013.2
Modified		
Backed		
Member		
Missing		
Stale		
Overlap		

Default text label decorators remain unchanged.

28192 -- Procedures for setting up UTF-8 in Eclipse

The User's Guide now includes a section on setting up UTF-8 in Eclipse. See Chapter 2, Working with Eclipse Projects for more information.

28207 -- New Quick Start page

The download page for AccuRev Plug-In has been enhanced to get you up and running with AccuRev Plug-In for Eclipse. The new Quick Start page provides:

- Direct access to the AccuRev update site URL and .zip download
- Simplified procedures that describe how to install, upgrade, and use AccuRev Plug-In to add an Eclipse project to AccuRev, share an Eclipse project with AccuRev, and create a new workspace based on an Eclipse project

The new AccuRev Plug-In for Eclipse Quick Start page is here:

<http://www.accurev.com/customer-support-resources/downloads/integration-packages/quickstart-accurev-plugin-eclipse>

28356 -- New: Send to Issue, Remove from Issue operations available

AccuRev Plug-In now provides support for Send to Issue and Remove from Issue operations. These operations support third-party ITS keys as well as AccuWork issue numbers and are available from the element context menu -- right-click the element, and choose **Team > Send To Issue** or **Remove From Issue**.

28819 -- Multiple projects on the same AccuRev Server no longer require multiple logins

In previous releases, if you had multiple Eclipse projects associated with AccuRev workspaces on the same AccuRev Server, AccuRev Plug-In would prompt you to log in for each project individually.

This problem has been corrected in the current release -- project and workspace information is now grouped for the same AccuRev Server requiring only a single login when the session expires or has not been established.

28970 -- Single AccuRev Plug-In for Eclipse for both Eclipse and IBM RAD

In previous releases, AccuRev provided separate AccuRev Plug-In packages for Eclipse and IBM Rapid Application Development (RAD), an Eclipse-based IDE. As of Version 2013.2, the AccuRev Plug-In for Eclipse can be used on both Eclipse and IBM RAD.

29323 -- Promote uses AccuRev session established in AccuRev Plug-In

In previous releases, the Promote operation did not use the AccuRev session created by logging in to AccuRev through AccuRev Plug-In. Because it relied on the AccuRev session established externally - - through the command line or AccuRev Client GUI, for example -- the Promote operation would fail when that session expired. This problem has been corrected in the current release.

29401 -- Diff by Transaction fails in History Browser if you are not logged in to AccuRev through the AccuRev Plug-In

In previous releases, the Diff by Transaction operation would fail when run from the History Browser unless you were logged in to AccuRev through AccuRev Plug-In (and not through the command line or AccuRev Client GUI). This problem has been corrected in the current release.

In addition, AccuRev Plug-In now works with the Eclipse diff tool.

Version 2013.1

This section describes changes to AccuRev Plug-In version 2013.1.

27581 -- Stream names displayed in Merge From and Patch From views.

AccuRev Plug-In now displays stream names in Merge From and Patch From views. In previous releases, AccuRev Plug-In displayed stream numbers in these views.

27586, 27603 -- Support for RAD 6, 7, and 8

AccuRev Plug-In version 2013.1 supports IBM RAD 6, RAD 7, and RAD 8.

27601 -- Support for Eclipse 4.2 (Juno)

AccuRev Plug-In 2013.1 supports Eclipse 4.2 (Juno).

27621 -- New: Browse button added to AccuRev page in Preferences

AccuRev Plug-In version 2013.1 adds a **Browse** button to the **AccuRev CLI** field on the AccuRev page in the Preferences window (**Window > Preferences**). This button allows you to navigate to the location of the AccuRev executable and capture the path. In previous releases, the value for the **AccuRev CLI** field had to be entered manually.

27705 -- Synchronize view shows external objects

The Eclipse Synchronize view now shows objects (files and directories) that have not been kept in AccuRev. (Such objects have a status of **(external)** in AccuRev.) For example, when you create a new project, objects like the **.settings** directory and the **.project file** will be displayed on the Eclipse Synchronize view.

27722 -- Support for elinked directories that are outside the Eclipse project

AccuRev Plug-In now allows you to create elinks in the Eclipse project hierarchy to resources that are under AccuRev control. In previous releases using AccuRev Plug-In with Eclipse 3.5 (Galileo) and earlier, AccuRev Plug-In would throw an error when opening Eclipse projects that used elinks in this fashion.

27751 -- Error in procedure for setting up a local update site

In previous releases, the procedure in the section "Setting Up a Local Update Site" in the *Installation and Release Notes* incorrectly referred to the **update-site.zip**. This problem has been corrected in the current release and now refers to the .zip file for the current release (**AccuRevPlugIn_Eclipse_2013_2.zip**, for example).

27755 -- Diff for elements and transactions now supported in the History view

The History view in AccuRev Plug-in version 2013.1 supports Diff functionality for both transactions and elements:

- You can right-click a transaction and choose **Diff Against > Other Version** or **Diff Against > File in the Workspace**.
- You can right-click an element associated with the current transaction and choose **Diff Against > Previous Transaction**.

27797 -- AccuRev Plug-In version number displayed in Eclipse Preferences

The version number of the currently installed AccuRev Plug-in is now displayed in Eclipse Preferences. To view the version number here, **Window > Preferences**. The new Version Details group box lists:

- Version: *The currently installed version*
- Date: *The date this version was built*
- Transaction: The AccuRev transaction number associated with the version's build

Tip: AccuRev Plug-In version information is also available from the **Help** menu. Choose **Help > About Eclipse SDK**, and then click either the AccuRev icon or the **Installation Details** button on the About Eclipse SDK dialog box.

28042 -- AccuRev Plug-In promote sequence matches that in AccuRev GUI

In AccuRev Plug-In version 2013.1, if you have change packages implemented at your site, AccuRev Plug-In now prompts you to first select an issue to associate with the changes you are promoting and then enter an optional comment. In previous releases, AccuRev Plug-In prompted you for the comment before asking you to choose an issue to promote against.

28257 -- AccuRev Plug-In supports Eclipse 4.2 (Juno) on MacOS 10.7 (Lion)

AccuRev Plug-In now supports Eclipse 4.2 (Juno) installed on the MacOS 10.7 (Lion) operating system.