



Borland Software Corporation  
4 Hutton Centre Dr., Suite 900  
Santa Ana, CA 92707

Copyright 2009-2010 Micro Focus (IP) Limited. All Rights Reserved. SilkTest contains derivative works of Borland Software Corporation, Copyright 1992-2010 Borland Software Corporation (a Micro Focus company).

MICRO FOCUS and the Micro Focus logo, among others, are trademarks or registered trademarks of Micro Focus (IP) Limited or its subsidiaries or affiliated companies in the United States, United Kingdom and other countries.

BORLAND, the Borland logo and SilkTest are trademarks or registered trademarks of Borland Software Corporation or its subsidiaries or affiliated companies in the United States, United Kingdom and other countries.

All other marks are the property of their respective owners.

July 2010

# Table of Contents

Overview of AutoComplete .....	4
Using FunctionTip.....	5
Using MemberList.....	6
Using AppStateList .....	7
Using DataTypeList.....	8
Customizing your MemberList .....	9
Turning AutoComplete options off.....	11

# Overview of AutoComplete

AutoComplete makes it easier to work with 4Test, significantly reducing scripting errors and decreasing the need to type text into your 4Test files by automatically completing functions, members, application states, and data types. There are four AutoComplete options:

- **Function Tip:** provides the function signature in a tooltip
- **Member List:** displays window children, properties, methods, variables available to your 4Test file
- **AppState List:** displays a list of the currently defined application states
- **DataType List:** displays a list of built-in and user-defined data types

AutoComplete works with both SilkTest-defined and user-defined 4Test files.

If you create a new 4Test file, you must name and save it as either a .t , .g.t, or .inc file in order for AutoComplete to work. After a 4Test file has been saved once, AutoComplete recognizes any changes you make to this file in the 4Test Editor and to include files that you reference via a 4Test use statement or the Use Files text box on the SilkTest Runtime Options dialog. When working with an existing 4Test file, you do not need to save or compile in order to access newly defined functions, methods, or members.

AutoComplete only works with 4Test files (.t, .g.t, and .inc) that use hierarchical object recognition or dynamic object recognition with locator keywords.

AutoComplete does not work on comment lines or within plan, suite, or text files. AutoComplete does not support global variables of type window. However, AutoComplete can handle Unicode content.

**Note** AutoComplete does not distinguish between SilkTest Agents. As a result, AutoComplete displays all methods, properties, variables, and data types regardless of the SilkTest Agent that you are using. For example, if you are using the SilkTest Open Agent, functions and data types that work only with the SilkTest Classic Agent are also displayed when you use AutoComplete. For details about which methods are supported for each SilkTest Agent, review the corresponding .inc file, such as the winclass.inc file.

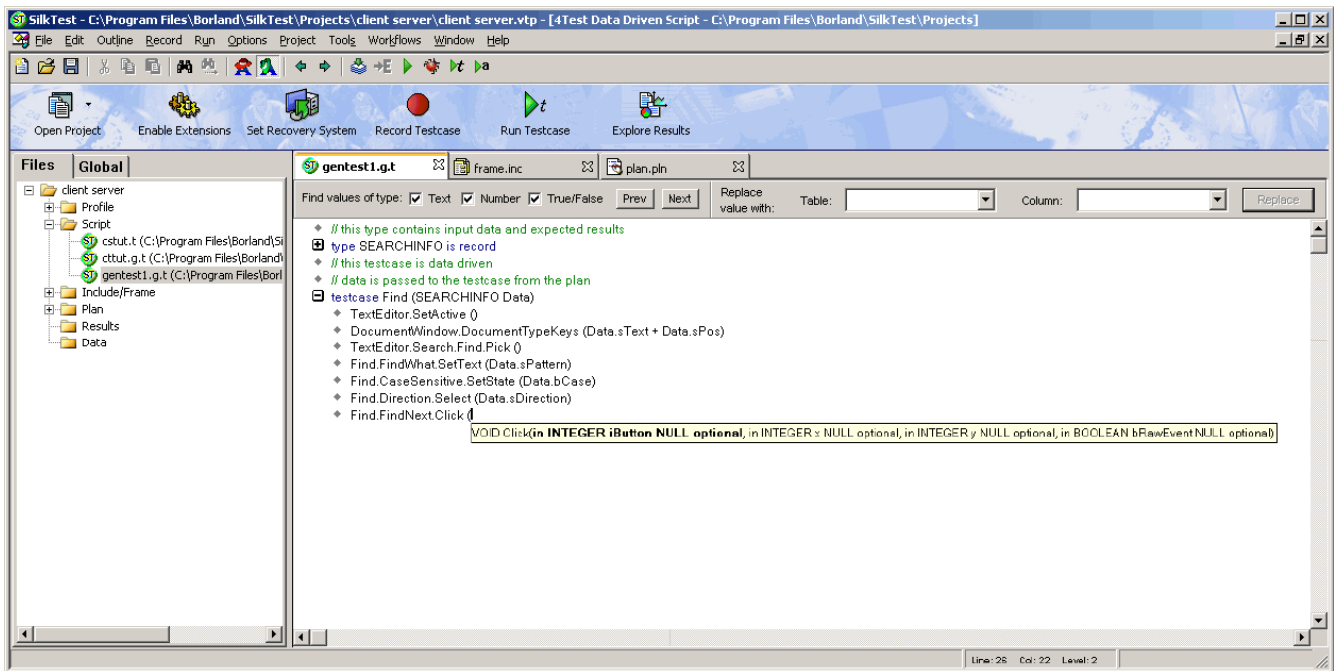
# Using FunctionTip

To display the function signature for a function, testcase, or method

1. Within your script (.t or .g.t) or include file, type the function, testcase, or method name, followed by an open parenthesis "("; for example **SetUpMachine(**  
The function signature displays in a tooltip with the first argument, if any, in bold text. The function signature includes the return argument type, pass-mode, data type, name of the argument, and null and optional attributes, as they are defined.
2. Type the argument. The FunctionTip containing the function signature remains on top and highlights the argument you are expected to enter in bold text. As you enter each argument and then type a comma, the next argument that you are expected to type is highlighted. The expected argument is always indicated with bold text; if you backspace or delete an argument within your function, the expected argument is updated accordingly in the FunctionTip. The FunctionTip disappears when you type the close parenthesis ")" to complete the function call.

If you want to dismiss the FunctionTip, press **Escape**. FunctionTip is enabled by default. See *Turning AutoComplete options off* if you want to disable FunctionTip.

For example, if you typed **Find.FindNext.Click(** the following FunctionTip for the Click method displays:



## Using MemberList

This topic contains instructions on how to use MemberList to view a list of members. It also includes information on selecting a member from the MemberList.

### To view a list of members

1. Within your script or include file, type the member name and then type a period (.); for example **Find**. The MemberList appears.
2. Use one of the following methods to select the appropriate member and paste it to the Editor:
  - type the first letter or the first few letters of the member and then press **Enter** or **Tab**
  - use your arrow keys to locate the member and then press **Enter** or **Tab**
  - scroll through the list and select a member with your mouse

You can choose to display any or all of the following members:

- Window children:** displays all window objects of type WINDOW that are defined in window declarations in the referenced .t, .g.t, and .inc files. Indicated in the MemberList with a yellow icon.
- Methods:** displays all methods defined in the referenced .t, .g.t, and .inc files. Indicated in the MemberList with a blue icon.
- Properties:** displays all properties defined in the referenced .t, .g.t, and .inc files. Indicated in the MemberList with a red icon.
- Variables:** displays all defined variables in the referenced .t, .g.t, and .inc files, including native data types, data, and records. Fields defined for records and nested records also appear in the list. Indicated in the MemberList with a red icon.

Depending upon the MemberList Options and the Inheritance Level you select, the types of members that appear in the MemberList will vary. For information about changing what appears in your MemberList and for instructions on how to view Member Type, see *Customizing your MemberList* and the AutoComplete area of the General Options dialog in the *online Help*.

### To select a member from the MemberList

You can use any of the following methods to select a member and paste it to the Editor:

- type the first letter or the first few letters of the member and then press **Enter** or **Tab**
- use your arrow keys to locate the member and then press **Enter** or **Tab**
- scroll through the list and select a member with your mouse

The MemberList is case sensitive. If you type the correct case of the member, it is automatically highlighted in the MemberList; press **Enter** or **Tab** once to paste it to the Editor. If you do not type the correct case, the member has focus, but is not highlighted; press **Enter** or **Tab** twice to select the member and paste it to the Editor.

To dismiss the MemberList, press **Escape**.

**Note** If members you were expecting to see do not appear in the MemberList, see *Customizing your MemberList* and *Why doesn't a member appear in my MemberList* in the *online Help*.

## Using AppStateList

To display a list of currently defined application states

Within your script (.t or .g.t) or include file, type your testcase declaration, followed by the keyword **appstate** and then press space; for example, testcase foo ( ) **appstate**. A list of currently defined application states appears.

You can also type the keyword **basedon** followed by a space; for example **appstate MyAppState ( ) basedon**.

Use one of the following methods to select the appropriate member and paste it to the Editor:

- type the first letter or the first few letters of the member and then press **Enter** or **Tab**
- use your arrow keys to locate the member and then press **Enter** or **Tab**
- scroll through the list and select a member with your mouse

## Using DataTypeList

To display a list of built-in and user-defined data types

1. Within your script (.t or .g.t) or include file, type **list**, **array** or **varargs**, as appropriate, followed by the **of** keyword and a space; for example, **list of**. The current list of built-in and user-defined data types appears. You can also view the list of data types by pressing **F11**.
2. Use one of the following methods to select the appropriate member and paste it to the Editor:
  - type the first letter or the first few letters of the member and then press **Enter** or **Tab**
  - use your arrow keys to locate the member and then press **Enter** or **Tab**
  - scroll through the list and select a member with your mouse



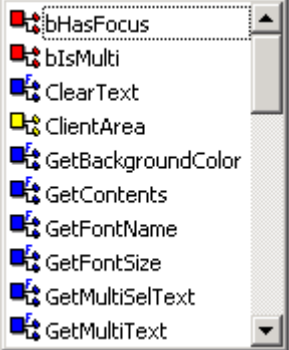
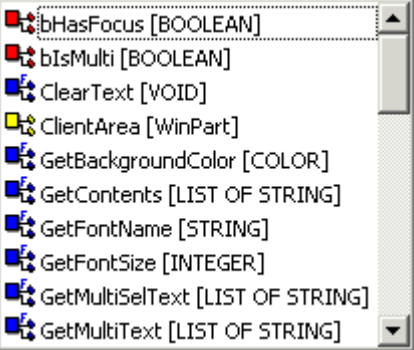
# Customizing your MemberList

The members that you see in the MemberList are dependent on the MemberList Options that you select. You can specify which members appear in your MemberList: window children, methods, properties, and variables. You can also determine how much detail appears in the MemberList by specifying the Inheritance Level and deciding whether or not you want to view class, data type, and the function return type for methods in your MemberList.

All member options are enabled by default and the default Inheritance Level is Below AnyWin Class, meaning that methods for any class derived from the AnyWin class will appear in the MemberList. Note that methods that are defined in and above the AnyWin class, such as Click and Exist, which are defined in the Winclass, will not appear in the MemberList. You can type these methods into your script, but they will not appear in the MemberList unless you change the Inheritance Level to All. For more information about the Inheritance Level see the AutoComplete area of General Options dialog.

## To customize your MemberList

1. Open SilkTest Classic and choose **Options/General**.
2. In the AutoComplete area of General Options dialog, make sure **MemberList** is selected.
3. In the MemberList Options area, select the members that you want to appear in your MemberList. For example, if you want to view only properties and variables, uncheck the Methods and Window Children check boxes.
4. Select the appropriate Inheritance Level for the selected methods. You can choose one of the following:
  - Below AnyWin Class**: displays methods for any class derived from the AnyWin class. Note that methods that are defined in and above the AnyWin class, such as Click and Exist, which are defined in the Winclass, will not appear in the MemberList. Below AnyWin Class is the default.
  - All**: displays the complete inheritance for members all the way up through AnyWin and the control classes, including the Winclass
  - None**: displays only those members defined in the class of the current object and window declaration
5. If you want to view attributes for the selected members, such as the class for window children, the data type for properties and variables, and the return type for method functions in your MemberList, check the Member Type check box. Member Type is not enabled by default. The following is a sample MemberList with and without Member Type enabled.

Default MemberList	MemberList with Member Type selected
 <ul style="list-style-type: none"> <li><input checked="" type="checkbox"/> bHasFocus</li> <li><input checked="" type="checkbox"/> bIsMulti</li> <li><input checked="" type="checkbox"/> ClearText</li> <li><input checked="" type="checkbox"/> ClientArea</li> <li><input checked="" type="checkbox"/> GetBackgroundColor</li> <li><input checked="" type="checkbox"/> GetContents</li> <li><input checked="" type="checkbox"/> GetFontName</li> <li><input checked="" type="checkbox"/> GetFontSize</li> <li><input checked="" type="checkbox"/> GetMultiSelText</li> <li><input checked="" type="checkbox"/> GetMultiText</li> </ul>	 <ul style="list-style-type: none"> <li><input checked="" type="checkbox"/> bHasFocus [BOOLEAN]</li> <li><input checked="" type="checkbox"/> bIsMulti [BOOLEAN]</li> <li><input checked="" type="checkbox"/> ClearText [VOID]</li> <li><input checked="" type="checkbox"/> ClientArea [WinPart]</li> <li><input checked="" type="checkbox"/> GetBackgroundColor [COLOR]</li> <li><input checked="" type="checkbox"/> GetContents [LIST OF STRING]</li> <li><input checked="" type="checkbox"/> GetFontName [STRING]</li> <li><input checked="" type="checkbox"/> GetFontSize [INTEGER]</li> <li><input checked="" type="checkbox"/> GetMultiSelText [LIST OF STRING]</li> <li><input checked="" type="checkbox"/> GetMultiText [LIST OF STRING]</li> </ul>

6. Click **OK** on the General Options dialog to save your changes.

## Turning AutoComplete options off

The following are instructions on how to disable AppStateList, DataTypeList, FunctionTip, and MemberList. For information customizing your MemberList, see *Customizing your MemberList*.

### To turn off AutoComplete options

1. Open SilkTest Classic and choose **Options/General**.
2. In the AutoComplete area of General Options dialog, uncheck the check box for each of the AutoComplete options that you want to disable, and then click **OK**.