



Silk Test 15.0

Release Notes

Micro Focus
575 Anton Blvd., Suite 510
Costa Mesa, CA 92626

Copyright © Micro Focus 2014. All rights reserved. Portions Copyright © 1992-2009 Borland Software Corporation (a Micro Focus company).

MICRO FOCUS, the Micro Focus logo, and Micro Focus product names are trademarks or registered trademarks of Micro Focus IP Development Limited or its subsidiaries or affiliated companies in the United States, United Kingdom, and other countries.

BORLAND, the Borland logo, and Borland product names are trademarks or registered trademarks of Borland Software Corporation or its subsidiaries or affiliated companies in the United States, United Kingdom, and other countries.

All other marks are the property of their respective owners.

2014-03-25

Contents

Silk Test 15.0 Release Notes	4
Silk Test Product Suite	5
System Requirements and Prerequisites	6
Hardware Requirements	6
Software Requirements	6
Installation Instructions	7
What's New in Silk Test	8
Mobile Browser Support	8
Easy Record and Replay	8
Configuration Testing	8
Chinese Localization	9
Usability Enhancements	9
Extend Existing Tests	9
Simplified Silk Test Workbench Login	9
Remove Default Admin User	10
Agent-Specific Documents	10
Enhanced Custom Control Support	10
Technology Updates	10
Microsoft Visual Studio 2013	10
New Eclipse Version	10
Microsoft Windows 8.1 Support	10
Internet Explorer Support	11
Mozilla Firefox Support	11
Google Chrome Support	11
Rumba Support	11
Apache Flex Support	11
Known Issues	12
General Issues	12
Mobile Web Applications on Android	13
Web Applications	14
Google Chrome	14
Internet Explorer	15
Mozilla Firefox	16
Rumba Applications	16
SAP Applications	16
Silk Test Classic	17
Silk Test Workbench	18
Silk4NET	20
Silk4J	21
Resolved Issues	22
Licensing Information	25
Tested Software	26

Silk Test 15.0 Release Notes

This file contains important information that might not appear in the Help. Read this file in its entirety.

For the latest version of this document, see <http://supportline.microfocus.com/productdoc.aspx>.

Navigate to supportline.microfocus.com for further assistance from Customer Care.

Silk Test Product Suite

The Silk Test product suite includes the following components:

- Silk Test Workbench – Silk Test Workbench is the native quality testing environment that offers .NET scripting for power users and easy to use visual tests to make testing more accessible to a broader audience.
- Silk4NET – The Silk4NET Visual Studio plug-in enables you to create Visual Basic or C# test scripts directly in Visual Studio.
- Silk4J – The Silk4J Eclipse plug-in enables you to create Java-based test scripts directly in your Eclipse environment.
- Silk Test Classic – Silk Test Classic is the traditional, 4Test Silk Test product.
- Silk Test Agents – The Silk Test Agent is the software process that translates the commands in your tests into GUI-specific commands. In other words, the Agent drives and monitors the application you are testing. One Agent can run locally on the host machine. In a networked environment, any number of Agents can run on remote machines.

System Requirements and Prerequisites

The following section identifies the system requirements for installing and running Silk Test.

Hardware Requirements

We recommend the following hardware requirements:

System Area	Requirement
Processor	Intel or AMD DualCore processor running at 2 GHz
RAM	2 GB
Hard disk space	2 GB of free disk space

Software Requirements

To install and execute Silk Test, the following software needs to be installed:

- Microsoft .NET Framework 4 (Full setup)

Installation Instructions

For information about installation and licensing issues, refer to the installation guide, available from <http://supportline.microfocus.com/productdoc.aspx>.

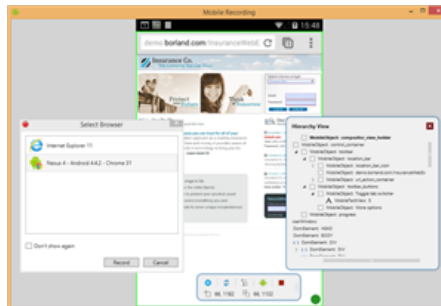
What's New in Silk Test

This section lists the significant enhancements and changes that were made for Silk Test.

Silk Test 15.0 supports the following features:

Mobile Browser Support

Use your existing scripts and run them on a mobile device to gain confidence that your Web 2.0 application will work on mobile devices as well. There is no need to create an additional script which can be executed only on the mobile device, you can just simply re-use the existing browser script that you have created for the Desktop-Browsers.



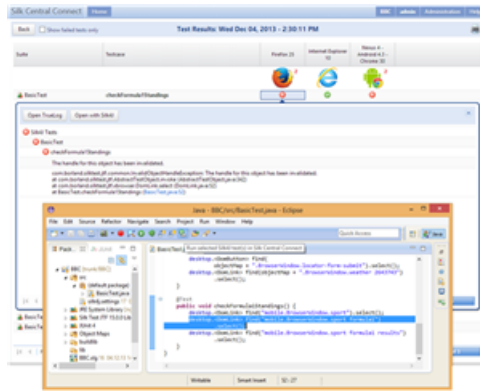
Easy Record and Replay

The new unified workflow makes it easy to record and replay scripts against any application. Even mobile browser recording is included and comes with a new intuitive and more interactive way of recording. This guarantees a much better script, as you can select what should be in the script during the actual recording.



Configuration Testing

Do you need to test your Web 2.0 application on a huge variety of platforms and browsers? That is no problem if you use Silk4J and Silk Central Connect, which is a new product that enables you to execute tests on different combinations of platforms and browsers (configurations), including pre-configured configurations within the Amazon Cloud.



Chinese Localization

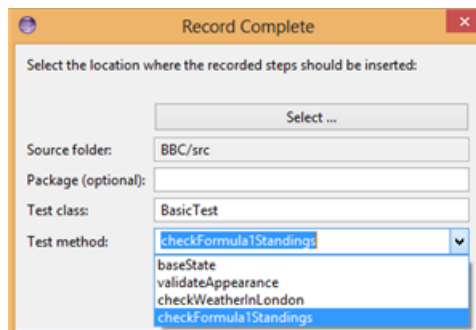
The Silk Test UI and the Release Notes are now available in simplified Chinese.

Usability Enhancements

This section lists usability enhancements that have been made in Silk Test 15.0.

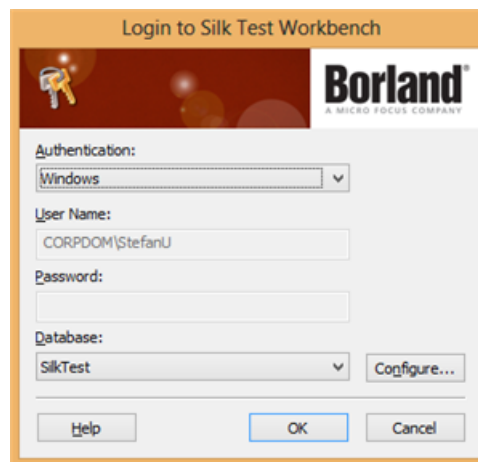
Extend Existing Tests

Do you have a test that is incomplete or needs to be extended to include additional workflows? Simply press the **Record Actions** button within the existing test and all the recorded actions are added to the test.



Simplified Silk Test Workbench Login

Are you tired of providing your credentials every time you start Silk Test Workbench? You can now login with your Windows credentials.



Remove Default Admin User

As soon as you have created another user with administrative rights in Silk Test Workbench, you can now remove the default user *Admin* from the list of users.

Agent-Specific Documents

Silk Test Classic provides different functionality with each agent. To enable easy access to the functionality provided by each agent, Silk Test Classic now provides a separate PDF Help for each agent. To access the PDFs, click **Start > All Programs > Silk > Silk Test > Documentation > Silk Test Classic**.

Enhanced Custom Control Support

For all technology domains that support dynamic invoke, you can now read the value of a public field of an object in the same way as reading a property of the object. The following code sample shows how you can now read the value of the public field *myPublicField*, which is part of the object *myObject*.

```
myObject.GetProperty("myPublicField");
```

Technology Updates

This section lists the significant technology updates for Silk Test 15.0.

Microsoft Visual Studio 2013

You can now integrate Silk4NET into Microsoft Visual Studio 2013 Professional to test your applications.

New Eclipse Version

The Eclipse version shipped with Silk4J is now 4.3.1.

Microsoft Windows 8.1 Support

You can now test your applications with Silk Test in Microsoft Windows 8.1.



Note: Metro apps are not supported.

Internet Explorer Support

Silk Test now includes recording and playback support for applications running in:

- Internet Explorer 11

Mozilla Firefox Support

Silk Test now includes playback support for applications running in:

- Mozilla Firefox 22
- Mozilla Firefox 23
- Mozilla Firefox 24
- Mozilla Firefox 25
- Mozilla Firefox 26
- Mozilla Firefox 27
- Mozilla Firefox 28

Google Chrome Support

Silk Test now includes playback support for applications running in:

- Google Chrome 28
- Google Chrome 29
- Google Chrome 30
- Google Chrome 31
- Google Chrome 32
- Google Chrome 33

Rumba Support

Silk Test now supports Rumba 9.1 and 9.2. Additionally, Silk Test now supports testing the Unix Display.

Apache Flex Support

Silk Test now supports Apache Flex 4.10 applications.

Known Issues

This section identifies Silk Test's known issues and their resolutions.

General Issues

Object Map Takes a Long Time to Open

If you have a large object map asset it takes a long time to load when you are using .NET 4. Install .NET 4.5 to resolve this issue.

When a remote desktop or remote desktop connection (RDC) is minimized, Silk Test does not function

When you connect through the remote desktop protocol (RDP) to a desktop, you take ownership of the desktop by attaching to the desktop with your mouse and keyboard. If the desktop is minimized without ownership of the desktop being released, any playback of mouse clicks or keystrokes is undefined.

The recommended configuration is to run Silk Test on a VMWare-server and connect through VMWare-client software. This allows replay to continue even if the client has been closed.

The Open Agent does not start when the Check Point firewall is installed

When you have a Check Point firewall or a Check Point ZoneAlarm firewall installed on your system, the Open Agent cannot be started, because the firewall interrupts the communication between the Agent and the infoservice.

To start the Open Agent, you have to uninstall the Check Point firewall from your system.

Testing Silverlight applications with Mozilla Firefox does not work well on some machines

The Silverlight support in Silk Test might not work well on some machines when used in Mozilla Firefox. A deadlock can occur if the Mozilla Firefox plugin process calls the host Mozilla Firefox process at the same time that the host Mozilla Firefox process calls the plugin process. For additional information, see https://bugzilla.mozilla.org/show_bug.cgi?id=686861 or https://bugzilla.mozilla.org/show_bug.cgi?id=558986. This known issue might occur in Silk Test because Silk Test is loading a .Net framework into the plugin process to test Silverlight. In this case, Silk Test cannot control when the .Net framework triggers a garbage collection, which calls into the host Mozilla Firefox process when freeing COM objects.

The `modifiers` parameter in the `domDoubleClick` method is ignored

You cannot specify the modifier in the overloaded `domDoubleClick` method. The modifier will not be double-clicked, although you have specified the parameter. The overloaded `domDoubleClick` method, which allows you to specify the modifier, is deprecated. To specify the modifier, you can use the `doubleClick` method, if you are using a client that supports an overloaded method with the `modifiers` parameter, or the `PressKeys` and `ReleaseKeys` methods.

The built-in spell checking in Microsoft Windows 8 might interfere with the replay of tests

The built-in spell checking in Microsoft Windows 8 can be enabled in applications like Internet Explorer 10.

If a word was incorrectly spelled during recording, and you replay typing this word, the spell checker will either mark it, or for commonly misspelled words will automatically fix it, which is the same behaviour a real user would get. If your tests were created on an operating system that did not include the spell checking

feature, you might get unexpected results when replying the tests on Microsoft Windows 8. To disable the spell checking, you can do the following:

1. Press **Windows Key + C**.
2. On the Charm bar, click **Settings**.
3. Select **More PC Settings**.
4. Select **General** to see the Spelling selections.



Note: These are system-wide settings, not settings specific to Internet Explorer 10.

5. Set **Autocorrect misspelled words** to off.
6. Set **Highlight misspelled words** to off.

When a .NET application is started from DevPartner Studio (DPS), Silk Test might not recognize it

To resolve the issue, perform the following steps:

1. Go to the Silk Test installation folder (by default, it's located at: C:\Program Files\Silk\Silk Test).
2. For Windows Forms applications, go to ng\agent\plugins\com.borland.fastxd.techdomain.windowsforms.agent_<version number>.
3. For Windows Presentation Foundation (WPF) applications, go to ng\agent\plugins\com.microfocus.silktest.techdomain.wpf.agent_<version number>.
4. In Notepad, open the file plugin.xml, and add the following line to the <loadparameters> section:

```
<param name="frameworkAssembly">mscorlib.dll</param>
```
5. Go to the ng\agent folder in the Silk Test installation folder (by default, it's located at: C:\Program Files\Silk\Silk Test\ng\agent).
6. In Notepad, open openagent.ini and add -clean as the first line of the file.
7. Log out of the computer, and then log back in. Silk Test works as expected with the application that was started by DevPartner Studio.

The highlighting rectangle is out of place when recording clicks on an area of an image

When you record a click on a part of a complex image, for example an area map, the green highlighting rectangle does not highlight the appropriate area of the image. However, the click will be executed correctly during replay.

Microsoft Windows 8 and Microsoft Windows Server 2012: Tooltips or context menus might cause modal dialog boxes to disappear

If you are using Silk Test on a machine with Microsoft Windows 8 or Microsoft Windows Server 2012, modal dialogs might move to the background when you view a tooltip or a context menu. This can cause some problems during recording and replay. For additional information about this issue, see <http://social.msdn.microsoft.com/Forums/vstudio/en-US/e5115c89-1f7e-430c-a62d-9a6bc2683eb1/tooltip-causes-modal-dialog-box-to-disappear-on-windows-8-and-ws2012?forum=wpf>. This issue is already fixed, and you can avoid this behavior by updating to .NET 4.5.1.

Mobile Web Applications on Android

Problems with concurrent use of adb

When the uiautomator testing framework is running it uses the Android Debug Bridge (adb) and this might cause problems in combination with the **Silk Test Web Tunneler** application. When running the uiautomator and the **Silk Test Web Tunneler** in parallel, warning messages similar to the following might be logged and infinitely repeated:

[WARN] SSH Tunnel for device 'Nexus 5' (id=04dcde2134409f32) at port 10001 closed with error code '1' (CommunicationTunnel.java:179) [WARN] SSH Tunnel for device 'Nexus 5' (id=04dcde2134409f32) at port 10001 reported: '[FATAL ERROR: Network error: Connection refused]' (CommunicationTunnel.java:180)

The reason for the problems is that when the uiautomator already has control of the adb, the **Silk Test Web Tunneler** application cannot set up any port forwarding. This is an adb issue.

The solution is to not run uiautomator in parallel with Silk Test.



Note: The same problems might occur in the reverse situation. When the **Silk Test Web Tunneler** application has control of the adb then the uiautomator is unable to take a screenshot of the device because it cannot use the adb.

The Silk Test Web Tunneler might disconnect on some Android devices

The **Silk Test Web Tunneler** might disconnect on some Android devices, for example Nexus 4 with Android 4.4.2. However, the **Silk Test Web Tunneler** will reconnect within a few seconds. The error message in the log file is `FATAL ERROR: Disconnected: Received SSH2_MSG_CHANNEL_WINDOW_ADJUST for nonexistent channel 269.`

Web Applications

Recording with a zoom level different to 100% might not work properly

Recording a Web application with a zoom level different to 100% might not work as expected. Before recording actions against a Web application, set the zoom level in the browser to 100%.

Google Chrome

Error in WaitForProperty on Google Chrome

You may get a `ReplayException` error when doing an action that causes navigation to a new page, and then use `waitForProperty` for synchronization on an object that exists on both pages. A workaround for the defect is to do the action, then a `Find` on an object which only exists on the new page, and then do the `WaitForProperty` if still necessary.

Silk Test does not recognize the Log In and Cancel buttons in the authentication dialog box of Google Chrome

Silk Test does not recognize the **Log In** and **Cancel** buttons in the authentication dialog box of Google Chrome. Use one of the following solutions to work around this limitation:

- Specify the username and the password in the URL of the website that you want to test. For example, to log in to the website `www.example.com/loginrequired.html`, use the following code:

```
http://myusername:mypassword@example.com/loginrequired.html
```

- Use `TypeKeys` to enter the username and password in the dialog box. For example, use the following code:

```
desktop.find("//Window[@caption='Authentication Required']/Control[2]").TypeKeys("myusername")
desktop.find("//Window[@caption='Authentication Required']/Control[1]").TypeKeys("mypassword<Enter>")
```



Note: `Control[2]` is the username field, and `Control[1]` is the password field. The `<Enter>` key at the end of the second `TypeKeys` confirms the entries in the dialog box.

Google Chrome 21, 26, 27: Invalid or missing Accessibility objects in dialog boxes

When you are recording locators for a Web application in Google Chrome, some Accessibility objects in dialog boxes might not be recognized or the recorded hierarchy of the objects might be invalid. This issue applies to all Javascript dialog boxes, for example prompt and the HTTP authentication dialog box. Existing tests, which are using these dialog boxes, might fail when they are replayed on Google Chrome.

OpenTab does not work properly with Google Chrome

When you use `OpenTab` while testing an application in Google Chrome, the automation interface of Google Chrome might stop responding and you might have to restart Google Chrome.

Locator recording in windows fails with Google Chrome

When you are testing a Web application in Google Chrome, locator recording in windows fails when multiple windows are open during application configuration in the Google Chrome instance, in which the application is running. If you close the other Google Chrome windows during application configuration, the error will not appear.

You cannot use Google Chrome to test Web sites that are using a Prototype JavaScript framework version previous to version 1.7

This is an issue in the Prototype JavaScript framework, where in framework versions previous to 1.7 arrays are incorrectly JSONified. This affects the internal `domAutomation` object of Google Chrome, on which the Google Chrome testing environment and the Silk Test implementation rely, and leads to a wrong behavior of Google Chrome during testing. This issue has been fixed in Prototype JavaScript version 1.7 or later.

To use Google Chrome to test web sites that are using the Prototype JavaScript framework, update Prototype JavaScript to version 1.7 or later.

Background applications in Google Chrome prevent automation support from loading

When you want to test a Web application with Google Chrome and the **Continue running background apps when Google Chrome is closed** check box is checked, Silk Test cannot restart Google Chrome to load the automation support.

Internet Explorer

Using Google toolbar interferes with recording Web applications

Using the Google toolbar with Internet Explorer 8 interferes with recording locators for Web applications. Turn off the Google toolbar before you record Web applications.

Microsoft Silverlight Applications

Some Microsoft Silverlight applications cause Internet Explorer to hang when interacting with Silk Test. On 32-bit platforms, refer to MS KB 2564958 (an update to Active Accessibility) to help prevent the issue.

Locators recorded with Silk Test versions prior to Silk Test 13.5 might no longer work in Internet Explorer

In Silk Test 13.5, we have adapted the normalization of white spaces of the `textContent` attribute in Internet Explorer. This change was made to improve the cross-browser capabilities of Silk Test, and might affect locators which rely on the `textContent` attribute, and which are used in scripts that were recorded with releases prior to Silk Test 13.5.

The Open Agent cannot have high elevation enabled when UAC is enabled on Microsoft Windows 8 or later and Internet Explorer 11

You cannot test a Web application in Internet Explorer 11 on Microsoft Windows 8 or later and have UAC enabled and run both Internet Explorer and the Open Agent with high elevation.

Mozilla Firefox

Calls into applications using Adobe FlashPlayer do not properly synchronize in the latest versions of Mozilla Firefox

When you are using Mozilla Firefox with a recent Adobe FlashPlayer version, some calls might not synchronize properly. The following issues might occur:

- Mozilla Firefox might falsely recognize a running script as stalled and might display a confirmation dialog box asking whether you want to continue the execution of the script, even though the script is running properly.
- Typing characters might not work because `SetFocus` is no longer working correctly.
- The Adobe automation might return an old value although the UI already shows a new value.

If you face one or more of these issues with applications using Adobe FlashPlayer, turn off the ProtectedMode in Adobe FlashPlayer. For additional information, see <http://forums.adobe.com/thread/1018071> and read the information provided under *Last Resort*.

Text recognition might have the wrong offset in Mozilla Firefox 17

In Mozilla Firefox 17, text recognition might not use the correct offset. In such a case, the content of Mozilla Firefox is not redrawn.

Text recognition does not work with Mozilla Firefox 18 or later

In Mozilla Firefox 18 or later, text recognition does not work.

Rumba Applications

Silk Test does not support testing the Rumba Mainframe Demo Host screen

Silk Test can record and replay the scripts that are running on any actually connected mainframe screen, but Silk Test cannot test the Rumba Mainframe Demo Host screen because of some technical limitations in the implementation of the Demo Host.

SAP Applications

HierarchyHeaderWidth and ColumnOrder Properties of the SAPTree Class are write only

Other than the automation documentation indicates, the `HierarchyHeaderWidth` and `ColumnOrder` properties of the `SAPTree` class are write only and cannot be read.

Ensure that your scripts use write rather than read with these properties.

GetColumnIndexFromName () of the SapTree Class May Fail with an "unspecified error"

`GetColumnIndexFromName ()` of the `SapTree` class may fail with an "unspecified error". This is a known issue in SAP automation.

Check the SAP web site to see if the issue has been resolved.

Calling the `select()` method of the `SAPTree` Class on a Context menu item may fail

Calling the `Select()` method of the `SAPTree` class on a Context menu item may fail.

Call `SelectContextMenuItem` on the parent control instead. This problem is a known issue in the SAP automation.

The position property for a horizontal scrollbar always returns 1

The position property for a horizontal scrollbar always returns 1. This is a known issue in SAP automation.

Check the SAP web site to see if the issue has been resolved.

The `SAPNetPlan` class is not supported

This issue will be resolved in a future release.

Replay error occurs when executing an SAP script in fast mode

In certain cases, if you record an SAP test using the Silk Test Recorder and then replay it using the **Replay speed: Fast** setting, an error occurs. The error says, `The data necessary to complete this operation is not yet available.`

Change the replay speed to a slower setting. Or, change the script to use SAP automation to replay the problematic action instead of `xBrowser`. For example, you might change the action from `DomLink.Select` to `SapHTMLViewer.SapEvent`.

The method `getCurrentRow` returns a wrong value with `SAPGUI` client 7.30

If you use `SAPGUI` client 7.30 and you call the method `getCurrentRow`, the method might falsely return -1 instead of the row number.

The method `resizeWorkingPane` is not working correctly with `SAPGUI` client 7.30

If you use `SAPGUI` client 7.30 and you call the method `resizeWorkingPaneEx`, the method will not resize the `workingPane` and calling `getSapWindow().getWidth()` will return a wrong value for the window width.

Silk Test Classic

Ensure that the `agent.exe` and `partner.exe` processes have been killed before attempting a Silk Test Monitor execution

When running Silk Test monitors or GUI-level tests, `Agent.exe` or `Partner.exe` may not close correctly after a monitor execution and the temporary results folder may remain opened. When this happens during a monitor execution, all subsequent monitors fail with the error `LoadtestController: 3302 - The results directory could not be cleared and do not clear.`

Kill the `Agent.exe` or `Partner.exe` process manually on the execution server or create an Action Essential which will automatically kill the processes whenever needed.

Unknown behavior occurs if a window class is declared without a tag

If a customer implements a window class in Silk Test without a tag, unknown errors and possible crashes occur. For example, in the following code, the `tag` line is mandatory.

```
[ - ] winclass MyDialogBox : DialogBox
[   ] tag "[DialogBox]"
[   ] locator "//DialogBox[@caption='Check Box']"
```

If the tag line is present, the code works as it should. However, if the tag line is missing, this leads to unknown errors and possible crashes. For example, the following code is problematic:

```
[ - ] winclass MyDialogBox : DialogBox  
[ ] locator "//DialogBox[@caption='Check Box']"
```

Silk Test Workbench

Replaying a Visual Test on a Large Site

You may encounter performance problems when running a visual test on a large site when using xBrowser. In order to avoid this, set the option **Playback > Results > VisualTest > ControlCapture** to **No**.

Message boxes display in the background when a script plays back (31314)

If you include a message box statement, such as `MsgBox ("Hello")` in .NET script, it displays in the background when you play back the script.

Include `MsgBoxStyle.MsgBoxSetForeground` in the `MsgBox` statement to have the message box display in the foreground. For example:

```
MsgBox ("Hello" , MsgBoxStyle.MsgBoxSetForeground)
```

Installer fails to install SQL Server Native Client and register Silk Test Workbench as a COM server

If the operating system performs an automatic update or the user initiates a Windows update during or before installation of Silk Test, the installer fails to install SQL Server Native Client and register Silk Test Workbench as a COM server.

Both of these problems affect Silk Central Test Manager (SCTM) integration, since SCTM uses the native client driver installed by SQL Server Express to create Silk Test Workbench DSNs. Furthermore, SCTM needs Silk Test Workbench registered as a COM server in order to use its COM interface for automation.

Choose one of the following solutions:

1. Do not install Silk Test while running a Windows update.
2. Ensure that Windows updates do not install automatically on your machine.
3. Install any pending Windows updates prior to installing Silk Test and reboot the system before installing Silk Test.

Modifying the hot key combination to include multiple modifiers causes additional keys to be recorded

If you configure a hot key for insert verification or start/stop record that contains multiple modifiers, occasionally the modifier press key action is recorded. For instance, if you specify a hot key combination of `Alt+Ctrl+F9`, `Alt` may be recorded as a press key action instead of being ignored as part of the hot key combination. This is a problem during playback because the appropriate release key actions are missing.

Manually remove the actions related to the modifiers, or only use one hot key modifier.

SQL Server DSN does not work on 64-bit systems

A 64-bit DSN cannot be used with Silk Test Workbench. To create a DSN for a 64-bit machine, click **Start > Silk > Silk Test > Administration > Data Sources (ODBC)** and create a 32-bit DSN. You can also use the WOW64 tools located at `C:\WINDOWS\SysWOW64\odbcad32.exe`.

Silk Test Workbench requires a network adapter to start

A network adapter must be available on the machine on which Silk Test Workbench is installed to enable the communication between Silk Test Workbench and the Open Agent during the start of Silk Test

Workbench. If no network adapter is available, a "Failed to connect to OpenAgent" error occurs. Other clients, such as Silk Test Classic and Silk4J, do not require a network connection to start.

Ensure that a network adapter is available before starting Silk Test Workbench.

SQL Server Express might not install on Windows Vista SP1 machines

On Windows Vista SP1 machines, ensure that the full version of .NET 3.5 SP1 is installed if you plan to install SQL Server 2008 Express. To install the full version of .NET 3.5 SP1, download it from the Microsoft Web site.

Identify from Screen Preview creates an incorrect object map item for a migrated database

After a database is migrated from Silk Test Workbench 2010 to Silk Test Workbench 2010 R2, using the **Identify from Screen Preview** creates incorrect object map items.

Use the **Update Screen** command to recapture the screen before using **Identify from Screen Preview**.

When a child script is called from a parent script, the child script can access the object map out of scope

If a parent and child script reside in different projects and use different object maps, the child script runs successfully even though the object map is out of scope for the child script.

Since the script runs successfully, there is no resolution necessary. However, this behavior will not work in future releases.

When multiple users attempt to simultaneously edit the same asset on a SQL 2008 database, issues with the asset locking mechanism might occur

To test for the problem, open an asset, like a visual test, for editing in the Silk Test Workbench. While the asset is open, attempt to open the same asset from a different instance of Silk Test Workbench. If the problem occurs, either the second instance of Silk Test Workbench will be able to simultaneously edit the same asset, or the second instance will receive a message with incomplete data. The user name and machine name will both be blank.

In SQL Server, allocate database admin rights to the SQL database users that use that database.

Unexpected error while exporting assets in a SQL database

The unexpected error, `Conversion failed when converting from Character string to Unique identifier`, occurs when exporting assets in a SQL database.

Import the exported database and press OK if any error messages occur. The import finishes successfully and the assets are available for use.

Unexpected behavior while using an Access database

Compact the database using the Silk Test **Database Maintenance** tool. Click **Start > Programs > Silk > Silk Test > Administration > Database Maintenance**. Then, open the database and click **Tools > Compact Database**.

Silk Test Workbench with UAC enabled during configuration cannot connect to an SQL Server

You cannot connect to an SQL server during configuration, when you are using Silk Test Workbench without administrator rights, and with UAC enabled.

To connect to the SQL server during configuration, you have to start Silk Test Workbench with the **Run as administrator** option.

Silk Test Workbench might crash when the connection to a remote SQL database is lost

When you are using a remote SQL database, and that database disconnects from Silk Test Workbench, for example because of a server restart, Silk Test Workbench might crash when trying to communicate with the database.

To reconnect with the database, restart Silk Test Workbench.

The replay of a visual test might get very slow if the Control capture option is set

Set the Control capture option to **No** to improve playback performance.

Microsoft Windows 7 Classic theme: Screen Previews of visual tests might contain the Recording window

Screen previews of visual tests which are recorded on a Microsoft Windows 7 machine with the Classic theme might contain the **Recording** window. To record visual tests in Microsoft Windows 7 without the **Recording** window, do not use the Classic theme.

Silk4NET

If you do not have a TrueLog result file after test execution make sure that:

- A Silk4NET project which is created in Visual Studio 2010 is executed within a Visual Studio 2010 environment (also when executed via the command line or Team Foundation Server).
- A Silk4NET project which is created in Visual Studio 2012 is executed within a Visual Studio 2012 environment (also when executed via the command line or Team Foundation Server).
- The test class contains the `SilkTestClass` attribute.
- You have write access to the location where the TrueLog file will be created.

If you get the following error message during replay "Unit Test Adapter threw exception... " make sure that:

- A Silk4NET project which is created in Visual Studio 2010 is executed within a Visual Studio 2010 environment (also when executed via the command line or Team Foundation Server).
- A Silk4NET project which is created in Visual Studio 2012 is executed within a Visual Studio 2012 environment (also when executed via the command line or Team Foundation Server).

How to migrate from a Silk4NET project created in VS2010 to VS2012:

- Open the solution in VS2012.
- Change the target framework of your Silk4NET project(s) to .NET Framework 4.5.
- Remove the Reference `SilkTest.Ntf.VisualStudio2010.UnitTestingExtension` from your Silk4NET projects
- Add the reference `SilkTest.Ntf.VisualStudio2012.UnitTestingExtension` to your Silk4NET projects.

When you are using object maps, existing locators that do not start with a slash will no longer work

Locators that include only a class name and that do not start with a slash, for example `PushButton`, will no longer work if object maps exist. This issue might result in breaking existing scripts that were created in a Silk Test version prior to Silk Test 14.0. For the previous example the script will fail with the following error:

Identifier 'PushButton' was not found in the Object Map.

More complex locators that include more than a class name, for example `PushButton[@caption=OK]` will continue to work, even if object maps exist.

To fix this issue, add a `//` to the start of any such locator. For example, if the locator `PushButton` in the following code does no longer work:

```
PushButton button = mainWindow.find("PushButton");
```

Change the code to:

```
PushButton button = mainWindow.find("//PushButton");
```

Silk4J

The Silk4J menu does not open correctly in Eclipse 4.1

When you click on the Silk4J menu button in Eclipse 4.1, the menu items are not displayed. This is an Eclipse issue that is fixed for Eclipse 4.2. For additional information, see https://bugs.eclipse.org/bugs/show_bug.cgi?id=367159.

When you are using object maps, existing locators that do not start with a slash will no longer work

Locators that include only a class name and that do not start with a slash, for example `PushButton`, will no longer work if object maps exist. This issue might result in breaking existing scripts that were created in a Silk Test version prior to Silk Test 14.0. For the previous example the script will fail with the following error:

Identifier 'PushButton' was not found in the Object Map.

More complex locators that include more than a class name, for example `PushButton[@caption=OK]` will continue to work, even if object maps exist.

To fix this issue, add a `//` to the start of any such locator. For example, if the locator `PushButton` in the following code does no longer work:

```
PushButton button = mainWindow.find("PushButton");
```

Change the code to:

```
PushButton button = mainWindow.find("//PushButton");
```

Resolved Issues

The following issues have been resolved:

Issue #	Description
RPI 1087345	The Open Agent influences the GUI of the Java Web Start application.
RPI 1089162	Saving referenced .NET script.
RPI 1089241	Silk Test Workbench: Microsoft Silverlight verification performance issue in visual tests.
RPI 1089395	Silk Test Workbench: Screen focus issue when adding screen verifications.
RPI 1089418	Silk Test Workbench: Issue with shortcut navigation in visual test results.
RPI 1089542	Some windows in a Java AUT do not open when the AUT is hooked by the Open Agent.
RPI 1089563	Silk Test Classic: The Classic Agent license is not released after the end of a test.
RPI 1089571	Silk Test Workbench remains in the background after inserting a control from the AUT.
RPI 1089791	The Silk Test installer does not add Windows Firewall exceptions in Microsoft Windows 8.
RPI 1089828	Visual step objects are now recorded with the fully qualified locators.
RPI 1089873	Silk Test Workbench 14.0: Insert Visual Test problem.
RPI 1089890	Problems using <code>VerifyBitmap</code> method.
RPI 1089915	Silk Test Workbench: Trying to get the IF Condition to work.
RPI 1089921	Using Silk Test 14.0 and the VMware vSphere client causes an <code>Object reference not set to an instance of object</code> error.
RPI 1089971	Silk Test Workbench 14.0: Issue with controls not being assigned an index.
RPI 1090018	The image verification UI is hanging.
RPI 1090077	Japanese: Silk Test 14.0 identifies <code>JTextArea</code> objects differently than Silk Test 13.5.
RPI 1090192	Silk Test is unable to identify a WinForms application.
RPI 1090153	Silk Test Classic: Cannot call the agent methods for image recognition.
RPI 1090319	The image verification step does not return values to reserved variables.
RPI 1090325, RPI 1090397	Silk Test Workbench: In Silk Test 14.0, error processing for a visual test always results in a playback error.
RPI 1090341	Open Agent crashing our Win32 application.
RPI 1090369	Google Chrome crashes when calling <code>getUrl</code> .
RPI 1090489	Java AWT/Swing: Silk Test records incorrect text when recording numeric keys.
RPI 1090498	Wrong behavior of the functions <code>DynamicInvokeMethods</code> and <code>InvokeMethods</code> .



Issue #	Description
RPI 1090638	Silk Test Workbench: An additional space in a verification property value is causing the verification to fail.
RPI 1090652	Silk Test 14.0 HotFix 1: Japanese Release Notes included in English installation.
RPI 1090716	Screen focus issue when adding screen verifications.
RPI 1090780	Silk Test Classic: Mark By Named Query does not mark test cases.
RPI 1090809	Silk Test Workbench: The properties shown in the Screen Preview of a visual test are different to the properties available in the AUT.
RPI 1090828	JDialog is not recognized by Open Agent on playback.
RPI 1090841	Silk4NET: Problem with object maps.
RPI 1091150	Silverlight: 'Using steps' do not allow interaction with controls in the screen preview.
RPI 1091294	Silk Test Workbench: Existing object map entries are ignored when recording a new test.
RPI 1091325	ORA-00942: Table or View not available. CDB Exception.
RPI 1091777	Silk Test Workbench: Silk Test 14.0 Hotfix 3: The context menu for the Edit button is disabled when the object map locator path is highlighted.
RPI 1092066	SAP recognition is lost when retrieving properties.
RPI 1092453	Silk Test Workbench: Unable to use <code>../</code> syntax in XPath.
RPI 1092458	Silk Test Workbench: Regression - Unable to use <code>Find Replace</code> in .NET script.
RPI 1092476	Silk Test Workbench: Failed to start application Internet Explorer in working directory.
RPI 1092572	Silk4J : Bad allocation exception when TrueLog is enabled.
RPI 1092635	Silk Test Workbench: Rumba screen verifications not recorded automatically.
RPI 1092644	Silk Test cannot identify a <code>TreeView</code> using the Open Agent.
RPI 1092753	Silk Test Workbench: The Expression Designer does not accept the <code>&&</code> Operator with text variables.
RPI 1092959	Silk Test Classic: <code>partner.exe</code> crashes when opening a file in a mapped drive.
DE5673	Locator Spy: The highlighting of elements in a browser is only working for one element.
DE5727	Silk Test Workbench: The command details column in a result does not contain the correct information.
DE5736	The Win32 replay of <code>ListBox.DoubleSelect</code> fails if the action leads to closing the dialog.
DE5840	Success condition timeouts for Silk Test Workbench executions cause subsequent tests to fail (Silk Central RPI 1090251).
DE6024	Internet Explorer 8 crashes when <code>isZoomed</code> is called in the About dialog box.
DE6898	<code>Agent.attachToMobileDevice()</code> needs to correct timeout.
DE6964	Android: Genymotion emulator not recognized.

Issue #	Description
DE6967	WPF4 hooking does not work on Microsoft Windows 8.
DE6974	Mozilla Firefox 24.3 does not work with Silk Test.
US12489	Show a message if the browser zoom factor is not 100%.

Licensing Information

Unless you are using a trial version, Silk Test requires a license.

The licensing model is based on the client that you are using and the applications that you want to be able to test. The available licensing modes support the following application types:

Licensing Mode	Application Type
Full	<ul style="list-style-type: none">• Web applications, including the following:<ul style="list-style-type: none">• Apache Flex• Java-Applets• Mobile Web applications.<ul style="list-style-type: none">• Android• Apache Flex• Java AWT/Swing• Java SWT and Eclipse RCP• .NET, including Windows Forms and Windows Presentation Foundation (WPF)• Rumba• Windows API-Based <p> Note: To upgrade your license to a Full license, visit www.borland.com.</p>
Premium	<p>All application types that are supported with a <i>Full</i> license, plus SAP applications.</p> <p> Note: To upgrade your license to a Premium license, visit www.borland.com.</p>

Tested Software

This section lists the software with which Silk Test 15.0 has been tested.




Operating Systems

Silk Test 15.0 has been tested with the following operating systems:

- Microsoft Windows XP SP3
- Microsoft Windows Vista SP2
- Microsoft Windows Server 2008
- Microsoft Windows Server 2008 R2
- Microsoft Windows 7
- Microsoft Windows 7 SP1
- Microsoft Windows 8
- Microsoft Windows 8.1
- Microsoft Windows Server 2012

Web Applications

For the Open Agent, Silk Test 15.0 has been tested with the following browsers and Web technologies:

Technology Type	Tested Version
Mozilla Firefox (playback only)	10, 17, 22, 23, 24, 25, 26, 27, 28
Google Chrome (playback only)	28, 29, 30, 31, 32, 33
Chrome for Android	
Stock Android Browser	
Internet Explorer	8, 9, 10, 11
Android	4.1, 4.2, 4.3, 4.4
Silverlight	3 (Silverlight Runtime 4), 4 (Silverlight Runtime 4 and Silverlight Runtime 5)  Note: Microsoft has committed to support Silverlight 5.0 until 2021, but has made no concrete announcement about the future roadmap of Silverlight. Whilst we endeavour to maintain the highest levels of support for our customers, we are occasionally limited in the support we can obtain from Microsoft on this platform.
Apache Flex	Silk Test 15.0 has been tested with Apache Flex version 3.5 or later using all supported browsers and Adobe AIR 2.0 or later (built with Apache Flex 4.x)  Note: Silk Test does not support testing child domain technologies, including Apache Flex, for Web applications running in Google Chrome. Silk Test supports Adobe Flash Player 10 or later.
Java Applets	Silk Test supports Applets for Internet Explorer and Mozilla Firefox.  Note: You can test Applet contents that are embedded into HTML, but you cannot test external dialogs and frames.
HTML5	

Desktop Applications

For the Open Agent, Silk Test 15.0 has been tested with desktop applications that are developed in one of the following technologies:

Technology Type	Tested Version
Java AWT/Swing (including Java Foundation Classes)	Java 1.6, Java 1.7, Java 1.8
Java SWT	Silk Test 15.0 has been tested has been tested with Java SWT version 3.2 or later. Standalone and Rich Client Platform (RCP) applications (SWT standalone applications executed as an applet in the browser are not supported)
SAP	SAPGUI client 7.10, SAPGUI client 7.20, SAPGUI client 7.30
Rumba	8.1, 8.2, 8.3, 9.0, 9.1, 9.2
Win 32	any
WinForms	.NET 3.0, 3.5, 3.5 SP1, 4.0, 4.5
WPF	.NET 3.5 SP1, 4.0, 4.5

Silk Test Workbench

Silk Test 15.0 has been tested with the following databases for Silk Test Workbench asset storage:

- Microsoft SQL Server 2008 (SP2) + Express
- Microsoft SQL Server 2012
- Microsoft SQL Server 2012 SP1
- Oracle 11.1
- Oracle 11.2
- Microsoft Access 2000 (as a single-user database)



Note: Micro Focus recommends using Microsoft SQL Server.

Silk4J

You can integrate Silk4J in Eclipse 3.7.2 or later, both 32 and 64 bit. Version 4.3.1 is shipped with Silk Test.

Silk4NET

You can integrate Silk4NET into the following versions of Visual Studio:

- Visual Studio 2010 Professional
- Visual Studio 2012 Professional
- Visual Studio 2013 Professional

Silk Test Classic

Silk Test Classic's Data Driven Workflow has been tested with:

- Text files and comma separated value files (*.txt and *.csv files)
- MS Excel
- MS Access
- MS SQL Server
- Oracle (partial support)

- SyBase SQL Anywhere

Silk Test Classic accesses the preceding databases using ODBC and therefore has been tested with the versions of those databases that have a working ODBC driver.



Note: The Silk Test Classic **Select Data Source** dialog box allows you to choose either the Silk DDA Excel or the Segue DDA Excel data source. For new data driven test cases, choose the Silk DDA Excel data source. Choose the Segue DDA Excel data source for backward compatibility. This allows existing .g.t files that reference Segue DDA Excel to continue to work.