

Silk Performer 10.0

PersonPB Reference

Micro Focus
575 Anton Blvd., Suite 510
Costa Mesa, CA 92626

Copyright 2013 Micro Focus. All Rights Reserved. Portions Copyright © 1992-2009 Borland Software Corporation (a Micro Focus company).

MICRO FOCUS, the Micro Focus logo, and Micro Focus product names are trademarks or registered trademarks of Micro Focus IP Development Limited or its subsidiaries or affiliated companies in the United States, United Kingdom, and other countries.

BORLAND, the Borland logo, and Borland product names are trademarks or registered trademarks of Borland Software Corporation or its subsidiaries or affiliated companies in the United States, United Kingdom, and other countries.

All other marks are the property of their respective owners.

2012-11-23

1

PersonPB Reference

Introduction

The PersonPB application that accompanies Silk Performer is required to perform all steps described in the Oracle tutorials of the *Silk Performer Tutorials* book. The application provides a simple user interface to search an Oracle database for customers, to update customer records, to insert new customer records, and to remove obsolete customer data.

Keep in mind that the application was developed chiefly for demonstration purposes. Database traffic generated by the application can easily be recorded with the Silk Performer Recorder, and BDL scripts based on the captured database traffic are easy to understand since they contain mostly simple Oracle API function calls.

Requirements

To work with the PersonPB application, you need one of the following:

- Oracle 9.x database or later
- SQLNet client (with compatible database version)

Setup

After having successfully installed Silk Performer, the PersonPB application is located in the SampleApp subdirectory. Refer to the *Silk Performer Installation Guide* for detailed information if you encounter any problems during setup.

Configuration

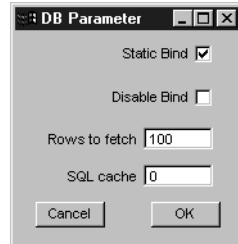
The PersonPB application provides a number of settings to specify the application behavior. Since these settings affect the SQL statements rather than

the user interface, you need to record the database traffic using Silk Performer's API Recorder for the differences to become visible.

Specifying parameters **Procedure** To set up the application parameters:

- 1 From the PersonPB menu bar, select **File/Parameter**.

You see the following.



- 2 Specify the **Static Bind** setting.
If this option is checked, each select-list item is defined separately. Otherwise, all select-list items are described using a single operation.
- 3 Specify the **Disable Bind** setting.
If this option is checked, parameters within SQL statements are replaced with constants rather than being bound to the corresponding program variables.
- 4 Enter the number of rows to fetch per iteration.
Only the specified number of rows are available after a fetch operation.
- 5 Specify the SQL Cache size.
This setting determines the maximum number of database cursors used by the application.
- 6 Click **Ok** to save your changes and close the dialog box.

Setting isolation level The isolation level determines how transactions modifying the database are handled.

Procedure To specify the isolation level:

- 1 In the **Customer OCI** window, select either the **Serializable** option or the **Read Committed** option.

See the Oracle documentation for an exact isolation level description.

Note In order to replay a test script using multiple virtual users, the isolation level of the traffic-generating application has to be set to **Read Committed**.

Working with the application

This section describes the PersonPB user interface provided to search a database for customers, to update customer records, to insert new customer records, and to remove obsolete customer data.

Connecting to a database

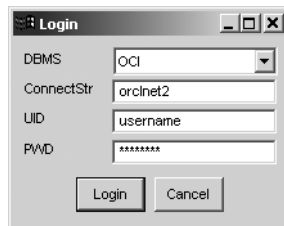
Login

First of all, you have to establish a connection between the PersonPB application and your Oracle database.

Procedure To connect to an Oracle database using **OCI 7** start with step 1a and for using **OCI 8** start with step 1b:

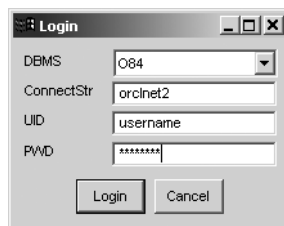
- 1a** Launch the **PersonPB V6** application for OCI 7 by clicking *Start/Programs/Silk/Silk Performer 10.0/Sample Applications/Database Samples/PersonPB V6 - OCI7 Sample Application*.

The **Login** dialog box is shown.



- 1b** Launch the **PersonPB V7** application for OCI 8 by clicking *Start/Programs/Silk/Silk Performer 10.0/Sample Applications/Database Samples/PersonPB V7 - OCI8 Sample Application*.

The **Login** dialog box is shown.



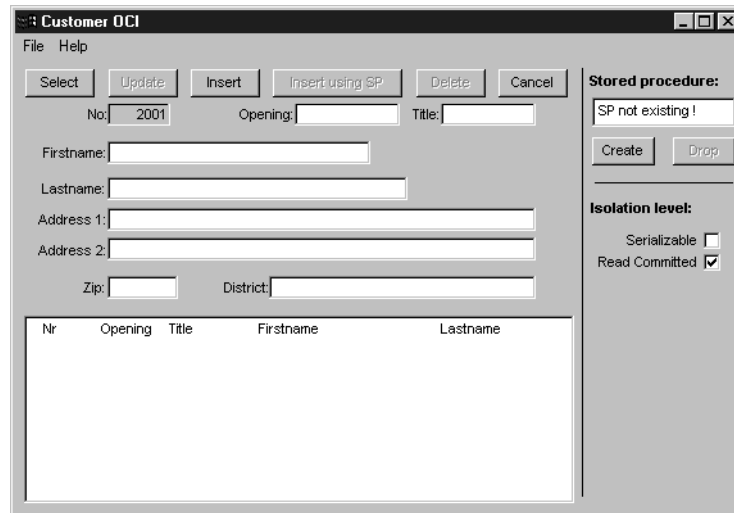
- 2** In the **Login** dialog box, enter the connection string to access your Oracle database.

A connection string is used to request a connection to a remote Oracle database. The SQL Net Easy Configuration tool, part of the Oracle client software, can be used to set up connection strings.

Refer to the documentation accompanying your Oracle software for detailed information.

- 3 Enter your user name and your password.
- 4 Click **Login** to establish a connection to your database.

The **Customer OCI** window is shown.



The screenshot shows the 'Customer OCI' window with a menu bar (File, Help) and a toolbar (Select, Update, Insert, Insert using SP, Delete, Cancel). The form contains the following fields:

- No: 2001
- Opening: []
- Title: []
- Firstname: []
- Lastname: []
- Address 1: []
- Address 2: []
- Zip: []
- District: []

On the right side, there are sections for 'Stored procedure:' (with a dropdown showing 'SP not existing!', 'Create', and 'Drop' buttons) and 'Isolation level:' (with 'Serializable' unchecked and 'Read Committed' checked).

At the bottom, there is a table with the following columns: Nr, Opening, Title, Firstname, Lastname.

Searching for customers

When searching the database for existing customer records, you optionally can specify any of the following search criteria:

- the customer's first name
- the customer's last name

Selecting customers

Procedure To search the database for customer records:

- 1 In the **Customer OCI** window, click **Cancel**.
- 2 Optionally, specify any search criteria.
- 3 Click **Select**.

All records found in the database are displayed in the customer list.

The screenshot shows the 'Customer OCI' application window. It features a menu bar with 'File' and 'Help'. Below the menu are buttons for 'Select', 'Update', 'Insert', 'Insert using SP', 'Delete', and 'Cancel'. The form contains several input fields: 'No.' (value: 1), 'Opening' (value: Company), 'Title' (value: Dr.), 'Firstname' (value: Bengt), 'Lastname' (value: Adkisson), 'Address 1' (value: Eight Commerce Street), 'Address 2' (value: Ensley), 'Zip' (value: 1605 Pastic), and 'District' (value: Oregon). On the right side, there is a 'Stored procedure:' section with a text box containing 'SP not existing!' and 'Create' and 'Drop' buttons. Below that is an 'Isolation level:' section with 'Serializable' (unchecked) and 'Read Committed' (checked) options. At the bottom, a table displays a list of customer records.

Nr	Opening	Title	Firstname	Lastname
1	Company	Dr.	Bengt	Adkisson
2	Company	Mag.	Sarah	Farrell
3	Mr.	Mag.	Richard J.	Elliott
4	Ms.	DI	Elizabeth	Sciaccaluga
5	Mr.	Dr.	Iain	Ocneanu
6	Mr.	DI	Michael K.	Patillo
7	Mr.	Dr.	Andrea	Lecroy

Updating a customer record

Since customer information may probably change, the PersonPB application provides a function to update an existing customer record.

Changing the customer information

Procedure To update an existing customer record:

- 1 In the **Customer OCI** window, make sure you have selected at least one customer.
- 2 From the customer list, select the customer record you want to update.
- 3 Update the customer information in the corresponding edit fields.
- 4 Click **Update**.

The updated information is automatically displayed in the customer list.

Inserting a new customer record

The PersonPB application can be used to administer any number of customers. Execute the following steps to create a new customer record.

Inserting a customer

Procedure To insert a new customer record into the database:

- 1 In the **Customer OCI** window, click **Cancel**.
- 2 Enter the new customer data, at least its first and its last name.

3 Click **Insert**.

Note Since the new customer record is not selected automatically, you have to click **Select** for the new customer to become visible in the list.

Removing a customer record

Whenever customer information is no longer needed, it can be removed from the database.

Removing a customer **Procedure** To remove a customer record:

- 1 In the **Customer OCI** window, make sure you have selected at least one customer.
- 2 From the customer list, select the customer record you want to remove.
- 3 Click **Delete**.

The specified customer record is automatically removed from the list.

Using stored procedures

The PersonPB application supports the usage of stored procedures to insert new customer records. Stored procedures are available mainly to demonstrate additional Silk Performer Recorder features.

Creating a stored procedure **Procedure** To create a stored procedure used to insert a new customer:

- 1 In the **Customer OCI** window, make sure no stored procedures exist.
- 2 Click **Create**.

The stored procedure can now be used to insert a new customer.

Inserting a customer **Procedure** To insert a new customer record using a stored procedure:

- 1 In the **Customer OCI** window, make sure you have created an appropriate stored procedure.
- 2 Click **Cancel**.
- 3 Enter the new customer data, at least its first and its last name.
- 4 Click **Insert using SP**.

Note Since the new customer record is not selected automatically, you have to click **Select** for the new customer to become visible.

**Dropping a
stored procedure**

Procedure To drop a stored procedure:

- 1 In the **Customer OCI** window, make sure you have created an appropriate stored procedure.
- 2 Click **Drop**.

From now on the stored procedure is no longer available.

